

www.KDwi.wUR I G. tPÄ Kngkb  
evsj vt` k

ewl R cöZte` b  
2010-2011

www.KDwi.wUR I G. tPÄ Kwgkb  
ewl R cÖZte` b 2010-2011

www.KDwi.wUR I G. tPÄ Kwgkb  
Rxeb exgv Uvl qvi (15, 16, 17 I 21 Zj v)  
10, w` j Kkv ev/G, XvKv-1000  
tdvbt 9568101-2, 9561525  
d`v. t (88)-02-9563721  
Website: <http://www.secbd.org>  
E-mail: [secbd@bdmail.net](mailto:secbd@bdmail.net)

wwwKDwi wJR I G. tPÄ Kwgkb  
ewl R cÖZte` b 2010-2011

m-Px c Î

μwgK bs	weei Y	côv bs
1	tPqvi g`v#bi cÖZte` b	4
2	evsj v#` tki A_%owZK wbt` RK	6
3	wek#`vcx cyRevRvi	8
4	evsj v#` tki cyRevRvi	10
5	K`wicUvj gv#KØ ti ,tj Uix wi digm	15
6	÷K G. tPÄ Zwj Kvfy <sup>3</sup>	23
7	K`wicUvj Bmj	25
8	Kt#v#i U dvBb`vY	27
9	wbeÜb	29
10	wgDPzqvj dvÜ GÜ Gmicwrf	33
11	mv#fBj `vY	34
12	mycvi w#fkb GÜ ti ,tj kb Ae gv#KØm&GÜ Bmjyvi tKv#úwlbR	35
13	mycvi w#fkb GÜ ti ,tj kb Ae B>Uvi wgiW/qwii R	44
14	wwwWGm	46
15	Gbt#dv#g>U	46
16	AvBb	47
17	GgAvBGm	47
18	M#el Yv I Db#b	48
19	evsj v#` k BÝwUwJDU Ae K`wicUvj gv#KØ	49
20	fweI `r cwii KÍ bv	49
21	Kwgk#bi Awv_# Ae`vi weei Yx	50
22	cwi w#ómga	51
23	Kwgk#bi m`m` I wbe#x#` i Zwj Kv	84



www.KDwi uUfRi thvMvb Ges weibtoqMKvixf`i mPZbZv I msukoo wetq AvbrRfbi wetqU AZ`si ,iaZcyf

cyRevRvi msukoo weia-wearb, weifbaet+Ktinvit`i`vqZi I weibtoqM wetq mPZbZv ewxi Rb` GmBim, wWGb, wMGB, gvPpU e`vsK I G`vtmU g`vrbRtgU tKvuvbxmgnfk Zvf`i mPZbZvgj K Avtj vPbv, gZweibogq I cikfY KgmPx Avtiv tRvi`vi KitZ nte| GKB mvf\_ weifbaetchf`q bxwZ-wbaftY RwoZ mKj fK cyRevRvti ,iaZi I aviYvmgn m`utK`AeinZ Kivi Kvhf`rg`i`ia Kiv ntf`Q|

weibtoqMKvixf`i `f`P`v Kiv Kugktbi GKwU Ab`Zg `vqZi| Gt`f`f` weibtoqMKvixf`i Rb` Avgv`i mietkl Dct`k Zviv thb ,RwfvEK I RbkewZ ZwoZ weibtoqM cwi nvi Ktib| weibtoqMKvixMY Zvf`i KowRZ mAq thb weibtoqM Ktib S`K mgwSZ (Risk Adjusted) mte`P wi Uvtf`P cZ`vkvq| wi Uvtf`P m`tebv wetkølf`Yi mvf\_ hMcR S`Ki weifbaet K thgb S`Ki gvIv, aib Ges S`K wboqSY I S`K nvtmi weifbaetKSkj m`utK` ,iaZi mvf\_ cixf`v/wbixf`v Kiv c`qvRb| tkqvi evRvti weibtoqvtMi Avil ceRZ`høj `ah`l mwnòZv| tkqvi evRvti mef`c`v mveRxb %enkó` nõj g`f`i DVv-bvgv| GB `enkó` wetePbvq wtoqB weibtoqvtMi Df`k, weibtoqvtMi f`gZv, KvsMLZ ktf`ZweibtoqvtMi c`c`Zv BZ`w`i mgstq ga`g (`xN) weibtoqM f`KSkj c`vqb GKwU Ab`Zg c`sv ntf` cvti |

cyRevRvtiK Awakzi Mwzkxj I hfMvcthvMx Kivi c`P`v wnmvte weifbaecwj w iaem, ti ,tj kb ms`vi, ÷K G- f`PAmgnfk kw`kvj xKiY Ges weibtoqMKvixf`i Av`v tdivtbi Rb` msukoo mKtj i mvf\_ thvMvthvM Ges hveZxq c`P`v Ae`vnZ itqtQ| GZ` mspvsi cyRevRvi Z` si Kwguji mpcwi kgvj v ev`evqb c`vqvaxb Avf`Q|

cyRevRvtiK Awakzi mK`f`j, `~Q, KvhRi I wbf`thvM` Kti Mto f`Zjvi Rb` GmBim Zvi Dci AwcZ `vqZi h\_vh\_fvte cvj b Kivi mef`Z`K c`P`v Pwj tq hvf`Q| Avkv Kiv hvq cyRevRvti fvj www.KDwi uUfRi mieivn Ae`vnZ ivLtf` I ewx KitZ cvitj, weibtoqMKvixf`i µgea`vb AskMhY Ae`vnZ `vKtj, Zvf`i cZwvi Z nevi S`K nvm Kiv tMtf`, evRvi msukoo mKtj tckv`wif`Zi g`bvfv wtoq `vqZi cvj b Kitj Ges mi Kvimn msukoo mKj gntj i mnthwMzv eZgvtbi b`vq Ae`vnZ `vKtj woku f`wel`f`Z evsjv`f`ki wkvqb, Kgm`vb m`v I `wi`^ w`tgvpf`bi gva`tg cyRevRvi A\_`wizf`Z Awakzi ewj o Ae`vb ivLtf`Z m`f`g nte etj wek`mKwi | tmB mvf\_ m`eci nte evsjv`f`ki ga`g Avtf`i t`fk ifcvsh`i Z nevi c`P`vi mdj ev`evqb|

msukoo mKj f`K Avsh`i K ab`ev` Rvbw`Q|

c`dmi W. Gg Lvqi`ej tnvtf`mb

f`qvig`vb



18	tgU cR MVb (wRwMc Gi %)	24				
19	tgU AF`šli b FY (wRwMc Gi %)	16.61	17.22	17.08(GwC0 j)		
20	tgU A_`qj (wRwMc Gi %)	3.58	4.06	2.87(GwCj)		2.59 c0
21	%`wkK mivmi wwb`qM(BDGm Wj vi wgwj qtb)	793.00	650.00	941	421(Rj vB-GwCj)	
22	tcU`dwj l wwb`qM(BDGm Wj vi wgwj qtb)	106.00	48.00	-159.00	83.27	
23	AvF`šli b FY Uv: tKwU`Z	205672.50	248767.80	288507.20	319485.30(GwCj chS)	4,21,171.10
24	ivR`msMh Uv: tKwU`Z	37219.32	47289.12	52519.77	46865.90(Rj vB-GwCj)	67,399.36
25	gwbUvi x GwM`MU (Uv: tKwU`Z)					
	K. b`v`iv gwb(M1)	50650.00	59849.90	66426.90	77579.10 gvP	98,544.50
	L. eW gwb(M2)	211504.30	248794.90	296499.80	343040.90 GwCj	4,29,275.80
	M. Kv`i`v` Bb mvK`j kb	28787.40	35648.50	39448.70	46328.50 GwCj	59,170.50
26	wi RvF`gwb Uv: tKwU`Z	44073.10	52789.60	69390.00	70545.90 GwCj	91,386.70
27	gwb mieivn ep`x (%)	16.75	17.63	19.17	15.70	18.25
28	gwbUvi x teR l gwb mieivn AbjcvZ (%)	20.84	21.22	23.40	20.56	21.29
29	wi RvF`gwb gw`ecj ( , Y)	4.80	4.71	4.27	4.86	4.70
30	e`vsk`tiU (%)	5.00	5.00	5.00	5.00	5.00
31	B`Uv`i`o`tiU					
32	w`tcw`RU`tiU (l`q`UW Mo)	6.46	7.46	8.26	7.20 GwCj	8.45
33	Kgw`k`q`j` tj`u`s`tiU (l`q`UW Mo)	12.75	11.82	13.46	12.37 GwCj	12.85
34	tj`u`s` l` w`tcw`RU`tiU Gi e`vj`v`Y	6.29	4.36	5.2	5.17 GwCj	4.40
35	tUR`vi`x`wej`tiU (3 gvm tgq`v`x) %				2.41	
36	Kj gwb`tiU (gvmK Mo)	7.67	9.74	1.71	4.35 GwCj	10.93
37	gy`h`cw`Z (l`q`UW Mo)	7.20	9.94	6.66	6.26 gvP	8.80
38	Wj`vi` Kbfv`m` (gvm tk`l) 1\$=Uv:	69.02	68.53	69.06	69.46	73.94
39	Avg`vbx` U\$`wgw`j`q`tb	17156.80	21629.00	22507.10	19411 GwCj	30,747.10

40	i Bvbx US wgwj qtb	12177.86	14110.80	15565.19	12940.05 GwGj	20,538.30
41	tUW e'vj rY (US wgwj qtb)	(4974.94)	(7518.20)	(6941.91)	(6471.15)	(10,208.80)
42	ti t`wkK g`ti mi Rvf®(US wgwj qtb)	5077.20	6148.82	7470.96	10146.24 tg	10,911.55
43	ti wgtUY (US wgwj qtb)	5978.47	7914.78	6989.26	10077.32 tg	11,649.59
44	mi Kvti i FY:					
	K. evsj v`k e'vsK	25555.20	25523.80	28479.20	23553.90 tg	23,584.60
	L. wWtcwRU gwmb e'vsKm	22266.50	36681.30	47542.30	53086.40 gvP®	62,187.90

### 3. wekpe'vcx cRRevRvi

wekji wewfbat`tki cRRevRvi, A\_@wWZtZ cwi eZ@ I ewbR` fvi mvg`

t`k	Rb 2011	wcb AbjvZ	gvfK@ Bi	Rb 2009 Gi Zj brq Rb 2010 G cwi eZ@			ewl R` mjt` i nvi (`f tgqvw`) (%)	ewbR` fvi mvg` wej qb Wj vti
				mPK cwi eZ@ (%)	GDP cwi eZ@ eZ@yb gtj` (%)	g`tUwWZ (%)		
evsj v`k (DSE GEN)	6,117.23	16.48	3.04	6.60	12.91	18.60	9.45	(9.21)
BuUqv (BSE 30)	18,693.90	19.96	1.15	(9.10)	7.80	9.10	8.46	(108.90)
cwK`tb (Karachi 100)	12,423.30	8.00		2.90	4.10	13.20	11.03	(15.20)
Bt` vtbkqv (Jakarta Composite)	3,830.30			8.00	6.50	6.00	4.31	24.00
gvj tqwkqv (KLSE Composite)	1,575.00	17.00	2.70	5.30	4.60	3.30	2.44	33.70
_vBj`vU(SET)	1,033.30	14.00	2.90	(2.10)	3.00	4.20	3.79	13.00
ZvBI qvb (ZvBI qvb I tqtUW)	8,573.40	15.00	3.10	(3.60)	6.50	1.70	1.41	7.60



Rvcv(Nikkei 225)	9,797.30			(4.00)	(1.00)	0.30	1.10	61.00
nsKs (Hang Seng)	22,061.20	18.00	2.60	(4.30)	7.20	5.20	1.96	(44.50)
vm/zvcj (Straits Times)	3,079.70	14.00	2.90	0.20	8.30	4.50	2.09	44.60
Rvg#bx(DAX)	7,294.10			13.20	5.40	2.30	2.98	188.40
BDtK(FTSE 100)	5,856.00			1.60	1.60	4.50	3.24	(153.10)
BDGmG (DJIA)	12,261.40			5.90	2.30	3.60	3.10	(680.90)

Gukqv c'vfmvdK KtqKwU t' tki Avf' šli b cyRevRvi gj ab I vRwWvc

	evRvi gj aY(US in bn)	vRwWvc(US in bn)	evRvi gj ab I vRwWvc AbjcvZ
t` k	Rp 2011		
evsj v` k (DSE)	38.60	94.54	40.83
BwUqv (BSE)	1,505.72	1,430.02	105.29
cwvk`lb (Karachi 100)	37.22	174.79	21.30
kUj vav (Colombo SE)	21.48	48.24	44.52
Bt` vtbwkv (SE)	407.91	695.06	58.69
evm@gvj tqwkv	437.61	218.95	199.87
_vBj vU(SE)	279.20	312.61	89.31
ZvBI qvb (SE Corp.)	802.69	426.98	187.99
wclwj cvBb (SE)	161.16	189.06	85.24
Rvcv(SE)	3,655.40	5,390.90	67.81
nsKs G- tPA	2,712.13	226.49	1,197.49
vm/zvcj G- tPA	669.42	217.38	307.95

## 4. evsj v`tki c]RevRvi

mmKDwi uJR I G. tPÄ Kugkb:

`xNfgqv`x A\_qtbi Drm wnmvte c]RevRvi GKw t`tki A\_ÖwZtZ ,iaZcY©fwgKv cvj b Kti \_vtK| GKw ubi tc], `q| I ^Q c]RevRvi tKvb t`tki wkivqb I A\_ÖwZK Dbqtb Acwivh© Gifc GKw ubi tc], `q|, ^Q I Revei`wZvgj K c]RevRvi mpoi Df]tk` mmKDwi uJR I G. tPÄ Kugkb AvBb, 1993 Gi Aaxtb 8 Rb, 1993 mtj mmKDwi uJR I G. tPÄ Kugkb cÖZöv Kiv nq, hvi gj Df]k`mgn wbejfc:

- mmKDwi uJR wnbtcqMKvi xt` i ^\_msi q|Y;
- mmKDwi uJR gvtkUj Dbqtb; Ges
- GZ`msµvšluel qvej x ev Z`axtb Avbj w½K wcarb cÖqb |

Kugkb c]RevRvi msukøó AvBtbi Aaxtb cÖqvRbxq wewagjv I cÖavbgjv cÖqb Kti \_vtK Ges Bmjqvi tKvúwb, ÷K G. tPÄ I c]RevRvti i mt\_ mú,³ wewfbega`ZvKix e`w³ ev cÖZövmgn KZK Zvi h\_vh\_cwi cvj b wöZ Kivi gva`tg c]RevRvi wqšy Kti \_vtK|

Kugkb GKRb tPqvi g`vb I PviRb mveq|wYK m`m` mgštq MwZ huiv AvBb tgvZvteK GKw wö`© tgqv` mi Kvi KZK wby³ ntq \_vtKb Ges Zv`i Pvkixi kZvej x mi Kvi KZK w`ixKZ nq| Kugktbi cäv wbevix wnmvte `wqZj cvj b Ktib Kugktbi tPqvi g`vb|

XvKv ÷ K G. þPÄ (wGmB) :

wGmB evsj vð þki cÞRevRvði cÞPxbZg cÖZövb | 28 Gncj 1954 mvþj D<sup>3</sup> ÷ K G. þPÄ cÖZwöZ ntj | Kvhpjg i iæ nq 1956 mvþj | 24 m`m` weikó cwi Pvj bv cl<sup>©</sup> wGmBöi Kvhpjg cwi Pvj bv Kti b | 12 Rb m`m` G. þPÄ m`m`þ`i ga` ntZ vbePZ nb Ges Aci 12 Rb, Kvgktþbi Abþgv`bµtg, vbePZ m`m`MY KZK gtbvbxZ nb hviv G. þPÄi m`m` bþnb | eZgvtb XvKv ÷ K G. þPÄi tgvU m`m` msL`v 238, hvþ` i gþa` 22wU m`m` Kvgkb ntZ wmwKDwi wUR tj bt`þbi Rb` vbeÜb mb`cÖB | eZgvtb wGmB Zvi Abj vBb tUwvs Kvhpjg þ`þki wfvMxq knimn tek wKQyþRj v knþi we`Z KtiþQ thgb MvRxcj, bvi vqbMÄ, Kvgj øv, tdbx, nveMÄ, tgSj fixvRvi, gqgbwmsn, mvfvi, PÆMög, Lj bv, wntj U, Kwóqv, ewi kvj, ivRkvnx | e,ov |

30 tk Rþ 2011 Zwi þL XvKv ÷ K G. þPÄ Zvwj Kvfv<sup>3</sup> wmwKDwi wUj msL`v 490wU, hvi weciþZ BmjKZ gj ab Gi cwi gvY 80683.90 þKwU UvKv Ges evRvi gj ab Gi cwi gvY 285389.22 þKwU UvKv (cwi wó-1 | 2) |

PÆMög ÷ K G. þPÄ (wGmB):

evsj vð þki cÞRevRvði wZxq ÷ K G. þPÄ wnmvte 1995 mvþj wGmB cÖZwöZ nq | 24 m`m` weikó cwi Pvj bv cl<sup>©</sup> wGmBöi Kvhpjg cwi Pvj bv Kti b | 12 Rb m`m` G. þPÄ m`m`þ`i ga` ntZ vbePZ nb Ges Aci 12 Rb, Kvgktþbi Abþgv`bµtg, vbePZ m`m`MY KZK gtbvbxZ nb hviv G. þPÄi m`m` bþnb | eZgvtb PÆMög ÷ K G. þPÄi tgvU m`m` msL`v 135, hvþ` i gþa` 120 wU m`m` Kvgkb ntZ wmwKDwi wUR tj bt`þbi Rb` vbeÜb mb`cÖB | eZgvtb wGmB Zvi Abj vBb tUwvs Kvhpjg þ`þki wfvMxq knimn tek wKQyþRj v knþi we`Z KtiþQ thgb PÆMög, XvKv, bvi vqbMÄ, tdbx, wntj U, tPŠgnbx, tlvqvLvj x, KKþvRvi, Lj bv, hþkvi, ewi kvj | ivRkvnx | GQvov wGmB BvUvi þbU tUwvs wntj ÷ g Pvj yKtiþQ hvi gva`tg wewbtqvMKvi wMY th þKvb `vb t`þK D<sup>3</sup> BvUvi þbU tUwvs wntj ÷ tgi gva`tg wGmB þZ wmwKDwi wUR þKbv-tePv Ki þZ cvti b |

30 tk Rþ 2011 Zwi þL PÆMög ÷ K G. þPÄ Zvwj Kvfv<sup>3</sup> wmwKDwi wUj msL`v 215wU, hvi weciþZ BmjKZ gj ab Gi cwi gvY 20677.39 þKwU UvKv Ges evRvi gj ab Gi cwi gvY 225978.00 þKwU UvKv (cwi wó-1 | 3) |

I fvi -w` -KvDvUvi gvþKØ ev OTC gvþKØ:

÷ K G. þPÄi evBþi tµZv Ges weþµZvi cvi `úwvi K mgþSvZvi wfvEþZ þKvb ga`-ZvKvi x e`wZþi þK OTC gvþKØU Abþgvw` Z A-Zvwj Kvfv<sup>3</sup> þKv`úwvbmngþni tkqvi þKbv-tePv ntq `vþK | ÷ K G. þPÄ ntZ Zvwj KvPiz | Kvgktþbi m`m`ZcÖB A-Zvwj Kvfv<sup>3</sup> þKv`úwvbmngþni tkqvi D<sup>3</sup> gvþKØU tj bt`b Kiv hvq | PÆMög ÷ K G. þPÄ Gi OTC gvþKØU Gifc þkqvi tj þbt`þbi mþhvM itqþQ | Securities and Exchange Commission (Over-the-Counter) Rules, 2001 Gi Aaxþb PÆMög ÷ K G. þPÄ OTC gvþKØ cÖZövn nq | Kvgktþbi wbt`Rµtg 6 tmþþw` 2009 G XvKv ÷ K G. þPÄ | -wU-wm gvþKØ Pvj yKti | OTC gvþKØU i tmþUj tgvU c×wZ cvej K gvþKØU Abjfc | wGmB | wUwm gvþKØU 30 Rþ 2011 Zwi þL Abþgvw` Z þKv`úwvi Zvwj Kv cwi wó-8 þZ cÖvb Kiv ntqþQ |

Zvwj Kvfj³ tKv³úvbwmgñi K'vUvMivB†Rkb:

Zvwj Kvfj³ tKv³úvbwmgñi gþvdrv c0vb, ewYwR'K KgR'U, GwRGg Abþvb, wmwKDwi uJR wWg'vUKi b Ges cWÄfZ tjvKmvb cwitkwaz gj atþi tPtq tekx nI qv BZ'w' wetePbvq Zvwj Kvfj³ tKv³úvbwmgñi K A, B, G, N Ges Z K'vUvMwi tZ wef³ Kiv nq | GB K'vUvMivB†Rkb wewb†qvMKvi xt' i wmwKDwi uJR Gi Yv Y m³ú†K®AewNZ ntq wewb†qvM w³všI Mh†Y mrvqZv K†i |

c0Zte`bvaxb A\_@Q†i Zvwj Kvfj³ tKv³cwmbmgñi gta` 0A0 K'vUvMwi fj³ tKv³cwmbi msL'v MZ eQ†i i Zj bvq ewx tct†q†Q | 0B0 I 0Z0 K'vUvMwi tKv³cwmbi msL'v MZ eQ†i i Zj bvq h\_vµ†g ewx I nwm tct†q†Q hv w†æi Q†K c0Zxqgvb nq:

K'vUvMwi	K'vUvMwi wbi fct†Yi µvB†Uwi qv	tKv³úvbi msL'v (A_@Q†i 2009-10)	tKv³úvbi msL'v (A_@Q†i 2010-11)
0A0	wbqwgZ eww R' m³aviY mfv Abþ0Z nI qv, 10% ev Z†ZwaK nvti j f'vsk tNvI Yv	166	235
0B0	wbqwgZ eww R' m³aviY mfv Abþvb, 10% Gi Kg j f'vsk tNvI Y	14	7
0G0	th mKj tKv³cwmb GLbl ewYwR'K Kvhpig i iæ K†i w	0	0
0N0	÷K G. tPtÄ m` Zvwj Kvfj³ tKv³cwmbmgñi Zvwj Kvfj³ i ci n†Z eww R' m³aviY mfv Abþvb bv nI qv chS-mgqKvj 0Gb0 K'vUvMwi fj³ nq	7	5
0Z0	wbqwgZ eww R' m³aviY mfv Abþv†b e`_Zv ev tKvbi fct j f'vsk c0vb bv Kiv, ev cWÄfZ tjvKmvb cwitkwaz gj ab†K Qwotq hvl qv, ev Qq gv†mi Awak mg†qi R†b` ewYwR'K Kvhpig `nwmZ ev eÜ_vKv	41	20

tWwi t†wUfm:

cWRevR†i AvMvg µq-wepµq Pw³ i gva†g SstKnmKZ wmwKDwi u†R wewb†qv†Mi m†hvM m³oi Rb` tWwi t†wUf tç0Wv±m c0qvRb | eZ0v†b evsj v† tki cWRevR†i D³ BÝU†gU Pvj j tKvb AvBbMZ Kivv†gv tbb Ges G wewl†q evRvi ga` ZvKvix Ges wewb†qvMKvi xt' i Avbl m³wgZ | wmwGmB eZ0v†b tWwi t†wUf tç0Wv±m Gi Dci c0k¶Y Gi Av†qvRb Kti hv†Q | Kwgkb G m³µvšI AvBbMZ wewl qmgn LwZ†q t` L†Q hv†Z tWwi t†wUf BÝU†gU Pvj j e`vc†i c0qvRbxq wewagvj v c0qv Kiv hvq |

eÜ gv#KØ :

evsj v# #ki c#RevRvi gj Zt BKzBwU wmwKDwi wUR wbfP| eZg#v#b gv# 8wU tKv#úwmbi 14 tKwU UvKvi wWteÁvi ÷K G. #P#Ä Zwj Kvfy# i#q#Q| mi Kwii eÜ cw# wPwZ Ges evRv#i i Mfxi Zv evov#Z weMZ 1 Rvbyqwi , 2005 Zwi L t\_#K ÷K G. #P#Ä mi Kwii tURvix eÜ tj b#` b i i æi e`e`v Kiv n#q#Q|

30 R# 2011Zwi L ch#XvKv ÷K G. #P#Ä 212wU mi Kwii tURvix eÜ, 3wU K#ç#iU eÜ, 8wU wWteÁvi i#q#Q hvi evRvi gj ab 39401.30 tKwU UvKv| Zte GLbl eÜ gv#K#Ui Rb#ç#Zv tZgb M#o D#v bvB| A\_#wefvM, A\_#gš#y#j q, evsj v#`k e`vsK, wmwKDwi wUR I G. #P#Ä Kwgkb Ges RvZxq ivR`#teW#eÜ gv#K#Ui Dbq#bi Rb` thš`fv#te KvR Ki#Q|

**Investors Protection Fund:**

wewb#qvMKvi xM#Yi `#\_#msi #i#Yi Rb` Dhaka/Chittagong Stock Exchange Investors Protection Fund Regulations, 1999 Gi Aaxb Dfq ÷K G. #P#Ä Investors Protection Fund Gi e`e`v i#q#Q| #Kvb ÷K te#Kvi hw` Av`vj Z KZ# t`Dwj qv (insolvent) tNwL Z wKsev t`#QvKZ ev Ab` tKvb Kvi#Y Dnv Ae#y#Bi (winding up) d#j M#n#Ki cvl bv cw# #kv#ta e`\_#nq tm#i#i#i ms#k#ó ÷K G. #P#Ä D#3 Znwe#j t\_#K #i#ZM#` wewb#qvMKvi x#` i #i#Zç#Y c#óv#bi e`e`v M#Y K#i \_v#K| 30#k R#, 2011 Zwi #L mgv#B A\_#eQ#i Avw\_# weeiYx Ab#hvqx wWGM#B#Z Investors Protection Fund G RgvKZ A#\_#P cw# gvb 1,50,00,000.00 UvKv Ges 30 #k R# 2011 Zwi #L mgv#B A\_#eQ#i i Avw\_# weeiYx Ab#hvqx wWGM#B#Z Investors Protection Fund G RgvKZ A#\_#P cw# gvY 53,41,887.00 UvKv| 2010-2011 A\_#eQ#i wWGM#B I wWGM#B#Z wewb#qvMKvi x KZ# -- Investors Protection Fund Gi weci#Z tKvb ai#bi #y#Zç#b Av`v#qi `vex Dc`w#Z nqwb|

c#ú#Z#v#bK m#k#v#b:

Zw#j Kvfy#3 tKv#úwmbmg# tde#qwi 2006 Zwi #L Rwi KZ K#ç#iU Mfb#Y MvBW jvBb mwKfv#te cw# cvj b Ki#Q wKvb c#ú#Z#v#bK m#k#v#b Gi Dbq#bK#i Kwgkb Zv gw#Ui K#i \_v#K| GB MvBW jvB#b tKv#úwmbi teW#G m`m` msL`v 5-20 wba#Y, BbW#ç#i#ú#U wW#i#i, tKv#úwmb m#Pe, ç#v#b A\_#Kg#KZ#, Af`š#i#Y w#q#š#Y wefvM#q ç#v#b w#q#v#Mi eva`evaKZv i#q#Q | MvBW jvBb Ab#v#i #Pqvi#g`vb Ges ç#v#b wbev#x Kg#KZv#(w#Bl) Ajv`v e`w#3 n#eb| D#3 MvBW jvBb Ab#hvqx Dwj #wLZ w#lq#v#xi cw# cvj b m#úwK#Z Z\_` ew#l # ç#ú#te`#b Aš#f#\_#v#Kvi weav# i#q#Q| Kwgkb D#3 MvBWj vBb#&Gi cw# cvj b w#v#Z K#i \_v#K|

B#Uvi #b#U wmwKDwi wUR ms#k#ó Kv#e#g:

B#Uvi #b#Ui gva`tg c#RevRvi ms#v#š#i w#k#l K#i wewb#qvM w#l#q Z\_` ç#v#n, gj` m#š#hw#RZ Z\_` tmev Ges wmwKDwi wUR ms#k#ó Ab`v#` Kv#e#g w#q#Zw#š#Kfv#te msNwUZ n#j c#RevRv#i AskM#YKvix w#v#b#e e`w#3/ms`v/c#ú#Z#v#b bv#vfv#te DcKZ n#e| G j #i#i` GmBw# B#Uvi #b#U wmwKDwi wUR ms#k#ó Kv#e#g m#p#fv#te P#j y Kivi ç#q#vR#b “Securities Activities Over Internet” k#l # GKwU w#v#g#j v/MvBWj vBb `Zixi Rb` KvR Ki#Q|

сґRevRvi Z` ś KugwUt

210 mvтj i wWtm=† gvm nтZ сґRevRvти A`vfweK Dì vcb cZтbi NUbv Z`тśí weMZ 26.01.2011Bs Zvvi тL GKwU RvZxq Z` ś KugwU MVb Kiv nq| KugwU 31тk gvP©2011Bs Zvvi тL Z` ś cŃZte`b mi Kvти i woku `wLj Kтib| D³ KugwU сґRevRvi Dbqтb Kuzcq `т tgqv`x, ga`tgqv`x I `xN©tgqv`x mpcwii k `wLj KтitQ hvi ev`evqb cŃuqvaxb itqтQ|

сґRevRvти i m=сŃvii Y I fivelr:

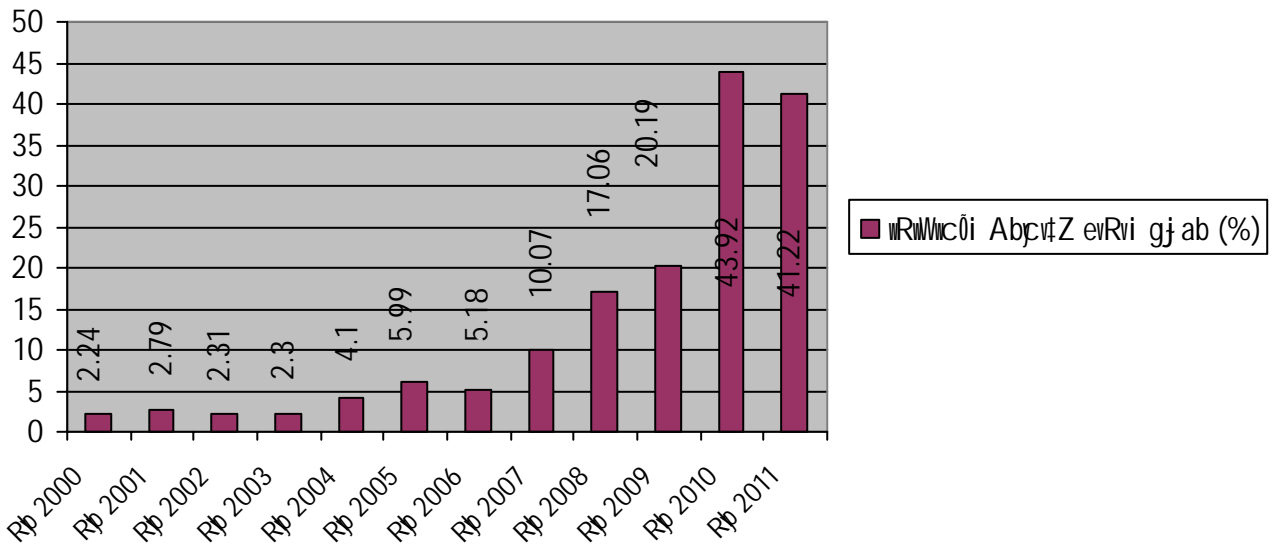
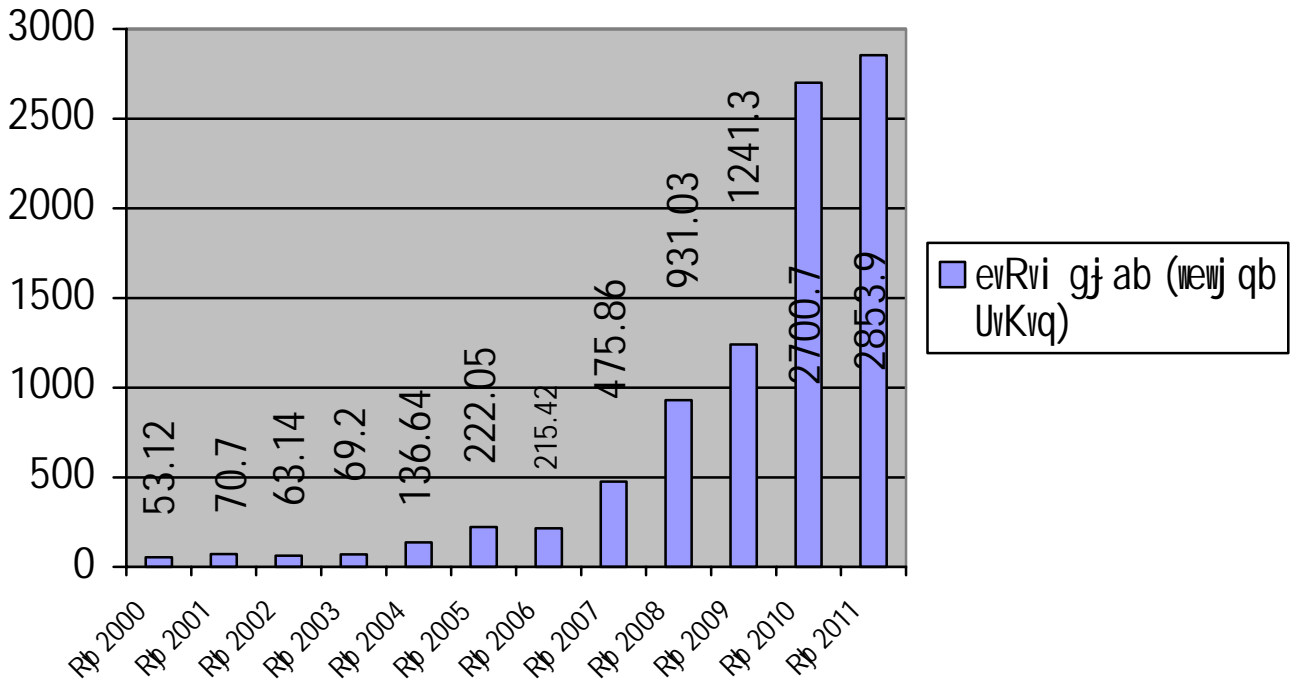
evsj vт`тki сґRevRvi GKwU `æZ eaŃkxj сґRevRvi | 1956 mvj т\_тK сґRevRvти i iia nтj I Gi `æZ evx NUтZ \_vтK 1993 mvтj wmwKDwi wUR I G· тPÁ Kugkb cŃZŃvi ci т\_тK | 2000 mvтj thLvтb evRvi gj ab wQj т`тki wRwWvcŃi 2.24% tmLvтb Rb 2010 тkтI tmwU `wotqтQ 41.22%| т`тki cŃvb сґRevRvi XvKv ÷K GKтPтÁ thLvтb `wobK тj bт`b nтZv 10/15 тKwU UvKv tmLvтb Zv cŃq 2500 тKwU UvKvq тcŃтQтQ| тj bт`тbi тbUI qvтKŃ cwi wa XvKv I PÆMŃg Qvotq т`тki 6wU wefvтMB we`Z nтqтQ| i ayZvB bq, wewfbetRjv knти I Ab`vb` , ifzcy`vтbI μgvMZ m=сŃvii Z nт"Q| Zte i ayтj bт`тbi тbUI qvтKŃ cwi wa we`Z nтj B ht\_Ń bq, cŃqvRb G welтq wetkI Kти wewтqvMKvixMтYi Rb` mswkŃ welтq Ávb evx Kiv Ges Zvт` i tgšj wfwĚK wewтqvM cŃbZv Mto DVw hv Zvт` itK AhwPZ Ńwzi nvZ т\_тK AtbKvstк i Ńv Ki te |

GmBwm, wWGb, wGmB I gvтPŃ e`vsKvi MY wbcwZ wewтqvMKvixт` i Rb` mswkŃ welтq cŃkŃY KgmPx Pwj тq hvт"Q| mswkŃ welтq avibv т`qvi j тŃŃ` eKтj UI tei Kiv nтqтQ| Avi I e`vcK cwi mти cŃkŃY Kvhpug Pvj vтbvi Rb` Bangladesh Institute of Capital Market bтg GKwU cŃZŃvb AbgvZ cŃB nтq Zvi Kvhpug iia KтитQ|

сґRevRvти i Mfxi Zv evxi Rb` eŃ gvтKŃ Gi Dbqтbi j тŃŃ` Ges twwi тfwf gvтKŃ iia i j тŃŃ` KvR Pj тQ| Avkv Kiv hvq AvMvgx eQi ,wj тZ GB тŃŃ` ,wj i wetkI DbwZ NUte|

eZgvtb GKwU AtvтgtUW wKqvvis I tmтUj тgU wт÷g cŃZŃvi Rb` KvR Pj тQ| GwU cŃZwŃZ nтj тj bт`тbi PdvšwŃwĚi mgq Avi I Kтg Avmte Ges `vfweKfvteB сґRevRvти i A\_ŃwZK KvhpugtK Zv Avi I MwZkxj Ki te|

wemZ KтqK eQти XvKv ÷K G· тPÁ wj t Gi evRvi gj ab Ges wRwWvcŃi AbcvтZ evRvi gj ab Gi nvi wbtgŃ wPт Zтj aiv nŃj -



## 5. K'wclUvj gv#K@ ti ,tj Uix wi digm G'vU KgcøvtqÝ

Kugk#bi K'wclUvj gv#K@ ti ,tj Uix wi digm I KgcøvtqÝ (mGgAvi Avi m) wfvM cyRevRvti i Dbq#bi j #T' wmkDwi wR mspvš i æj m/ti ,tj kb cŷqb I Rvix Kti \_vtK, cŷqvRb tgvZvteK D<sup>3</sup> i æj m/ti ,tj kb Gi

mstkvab mn c<sub>1</sub>RevRvi ms<sup>-</sup>vi ms<sub>1</sub>vbgk Kg<sub>1</sub>v<sub>1</sub> GB we<sub>1</sub>vM m<sub>1</sub>uv<sup>^</sup> b K<sub>1</sub>i \_v<sub>1</sub>tK |

Rj vB, 2010-R<sub>1</sub>b, 2011 mg<sub>1</sub>tq c<sub>1</sub>RevRvi ms<sub>1</sub>uk<sub>1</sub> v<sub>1</sub>b<sub>1</sub>t<sub>1</sub>q<sub>1</sub><sup>3</sup> mstkvab/v<sub>1</sub>Av<sub>1</sub>t<sub>1</sub> k/v<sub>1</sub>b<sub>1</sub>t<sub>1</sub> R<sub>1</sub>bv R<sub>1</sub>wi K<sub>1</sub>i v<sub>1</sub>ntq<sub>1</sub>tQ<sub>1</sub>t

μ <sub>1</sub> gK bs	welq	‡kYwe <sub>1</sub> vM	m <sub>1</sub> t <sub>1</sub> bs
1	Declaration by sponsors/directors/placement holders before sell or dispose off their shares or mutual fund units	Directive	SEC/CMRRCD/2009-193/46/Admin/02-23 Dated: July 01, 2010
2	The members of the stock exchanges shall not extend credit facilities to their approved clients beyond 1(one) time of the clients' margin under the Margin Rules, 1999.	Directive	SEC/CMRRCD/2001-43/47 Dated: July 08, 2010
3	gv <sub>1</sub> tP <sub>1</sub> e <sub>1</sub> vsK <sub>1</sub> vi (t <sub>1</sub> c <sub>1</sub> v <sub>1</sub> U <sub>1</sub> t <sub>1</sub> d <sub>1</sub> w <sub>1</sub> j   g <sub>1</sub> v <sub>1</sub> t <sub>1</sub> b <sub>1</sub> R <sub>1</sub> vi) KZ <sub>1</sub> R <sub>1</sub> D <sub>1</sub> nvi g <sub>1</sub> t <sub>1</sub> °j <sub>1</sub> t <sub>1</sub> i <sub>1</sub> t <sub>1</sub> K we <sub>1</sub> ZiY <sub>1</sub> t <sub>1</sub> h <sub>1</sub> v <sub>1</sub> M <sub>1</sub> g <sub>1</sub> w <sub>1</sub> R <sub>1</sub> F <sub>1</sub> t <sub>1</sub> Yi m <sub>1</sub> t <sub>1</sub> e <sub>1</sub> P <sub>1</sub> n <sub>1</sub> vi 1 t 1	Av <sub>1</sub> t <sub>1</sub> k	GmB <sub>1</sub> w <sub>1</sub> /w <sub>1</sub> GgAvi Av <sub>1</sub> i w <sub>1</sub> /2001-43/48 Zwi L: Rj vB 08, 2010
4	Declaration by directors/sponsors/placement holders before buy/sell or dispose off their shares in the listed issuers.	Directive	SEC/CMRRCD/2009-193/49/Admin/03-48 Dated: July 14, 2010
5	Declaration by sponsors/placement holders before sell or dispose off their mutual fund units	Directive	SEC/CMRRCD/2009-193/50/Admin/02-24 Dated: July 14, 2010
6	Limiting the credit facilities provided by the members to the individual clients or their spouse or any of their dependent persons, their directors or their spouse or any of their dependent persons or stock-dealer concerned.	Directive	SEC/CMRRCD/2001-43/51 Dated: July 22, 2010
7	gv <sub>1</sub> tP <sub>1</sub> e <sub>1</sub> vsK <sub>1</sub> vi (t <sub>1</sub> c <sub>1</sub> v <sub>1</sub> U <sub>1</sub> t <sub>1</sub> d <sub>1</sub> w <sub>1</sub> j   g <sub>1</sub> v <sub>1</sub> t <sub>1</sub> b <sub>1</sub> R <sub>1</sub> vi) KZ <sub>1</sub> R <sub>1</sub> D <sub>1</sub> nvi e <sub>1</sub> w <sub>1</sub> <sup>3</sup> t <sub>1</sub> k <sub>1</sub> o <sub>1</sub> xi g <sub>1</sub> t <sub>1</sub> °j <sub>1</sub> t <sub>1</sub> i <sub>1</sub> t <sub>1</sub> K we <sub>1</sub> ZiY <sub>1</sub> t <sub>1</sub> h <sub>1</sub> v <sub>1</sub> M <sub>1</sub> g <sub>1</sub> w <sub>1</sub> R <sub>1</sub> F <sub>1</sub> t <sub>1</sub> Yi m <sub>1</sub> xg <sub>1</sub> v <sub>1</sub> v <sub>1</sub> b <sub>1</sub> a <sub>1</sub> f <sub>1</sub> Y	Av <sub>1</sub> t <sub>1</sub> k	GmB <sub>1</sub> w <sub>1</sub> /w <sub>1</sub> GgAvi Av <sub>1</sub> i w <sub>1</sub> /2001-43/52 Zwi L: Rj vB 22, 2010
8	Limiting the credit facilities provided by the members to the individual clients or their spouse or any of their dependent persons, their directors or their spouse or any	Directive	SEC/CMRRCD/2001-43/53 Dated: July 25, 2010



μwgK bs	wel q	‡kYwefVM	m‡ bs
	of their dependent persons or stock-dealer concerned.		
9	gv‡P‡U e'vsKvi (fcvU‡clwj I gv‡bRvi) KZ‡R Dnvi e'w <sup>3</sup> ‡k‡xi g‡°j‡'i‡K weZiYKZ AwZwi <sup>3</sup> gwiR‡B FY mgš‡q Kivi mgq	Av‡`k	GmBwm/wmGgAvi Avi wmw/2001-43/54 Zwi L: Rj vB 25, 2010
10	wmwKDwi wUR I G- ‡PÄ Kwgkb (D‡j - L‡thvM' msL`K ‡kqvi AR‡B, AwM‡hY I KZ‡j M‡hY) weWagjv, 2002 Gi mst‡kvab	c‡Avcb	GmBwm/wmGgAvi Avi wmw/2001-25/55/c‡kvmb/03-50 Zwi L: Rj vB 27, 2010
11	KwZcq c‡Z‡vb I e'w <sup>3</sup> i b‡tg gv‡P‡U e'vsKv‡ii mwnZ iw‡‡Z Kv÷gvi wmwve (client account) wMZ ( Freeze) KiY	Av‡`k	GmBwm/wmGgAvi Avi wmw/2008-179/56, Zwi L: Rj vB 27, 2010
12	Amendment to the Securities and Exchange Commission (Public Issue) Rules, 2006	Notification	SEC/CMRRCD/2008/186/57/Admin/03-49 Dated: August 01, 2010
13	Repeal of the Order No. SEC/CMRRCD/2006-159/Admin/02/09 Dated: May 30, 2006	Order	SEC/CMRRCD/2009-193/58/Admin/02-25 Dated: August 04, 2010
14	Providing margin loan by stock brokers to purchase mutual fund units	Directive	SEC/CMRRCD/2009-193/58 Dated: August 30, 2010
15	Providing margin loan by merchant bankers to purchase mutual fund units	Directive	SEC/CMRRCD/2009-193/59 Dated: August 30, 2010
16	Amendment to the Securities and Exchange Commission (Public Issue) Rules, 2006	Notification	SEC/CMRRCD/2003-109/60/Admin/03-51 Dated: August 31, 2010
17	Conditions for unlisted security under section 2CC of the Securities and Exchange Ordinance, 1969	Notification	SEC/CMRRCD/2009-193/61/Admin/03-52 Dated: September 06, 2010
18	Condition under section 2CC of the Securities and Exchange Ordinance, 1969	Notification	SEC/CMRRCD/2009-193/62/Admin/03-53 Dated: September 06, 2010
19	Directive regarding netting, NAV and margin call under section 20A of the Securities and Exchange Ordinance, 1969	Directive	SEC/CMRRCD/2009-193/63 Dated: September 06, 2010
20	Directive for clarification of the Directive No. SEC/CMRRCD/2009-193/63	Directive	SEC/CMRRCD/2009-193/64 Dated: September 21, 2010



μwgK bs	wel q	‡kYwe fVM	m‡ bs
	Spot Market for trading.		Dated: November 30, 2010
29	Time extension to effect amendment to the Dhaka Stock Exchange (Member's Margin) Regulations, 2000 and the Chittagong Stock Exchange (Member's Margin) Regulations, 2000	Order	SEC/CMRRCD/2001-49/73 Dated: December 01, 2010
30	The members of the stock exchanges shall not extend credit facilities to their approved clients beyond 1.00 (one) time of the clients' margin under the Margin Rules, 1999.	Directive	SEC/CMRRCD/2001-43/75 Dated: December 13, 2010
31	gvtPDU e'vsKvi (tcvUdclwj l g'v‡bRvi) KZR Dnvi g‡°j‡'i‡K weZiY‡hvM' gwR‡B F‡Yi m‡ePP nvi 1 t 1 (A_‡, g‡°j ev M‡nt‡Ki Znwe‡j i mg cwi gvY)	Av‡'k	GmBwm/wmGgAvi Avi wm/2001-43/74 Zwvi L: wW‡tm‡† 13, 2010
32	Zwvj KvF‡B ‡Kv‡úvmbi D‡' v‡v/cwi Pvj K wnmv‡e MYc‡RvZŠy eisj v‡'k mi Kvi Ges Dnvi wvqŠy‡vaxb ms‡vmgn‡K wmwKDwi wJR we‡m‡qi j‡†‡' wmwKDwi wJR l G. ‡PÁ Kwgkb (m‡eav‡fVMx e' emv wvwl ×KiY) we‡agvj v, 1995 Gi we‡a-4(2) Gi eva‡evaKZv nB‡Z Ae‡v‡wZ c‡v‡b	Av‡'k	GmBwm/wmGgAvi Avi wmwW/2001-26/76 Zwvi L: wW‡tm‡† 14, 2010
33	Repeal of Order regarding amendment to the Dhaka Stock Exchange (Member's Margin) Regulations, 2000 and the Chittagong Stock Exchange (Member's Margin) Regulations, 2000	Order	SEC/CMRRCD/2001-49/77 Dated: December 19, 2010
34	Repeal of the Directive No. SEC/CMRRCD/2009-193/22 dated February 18, 2010 by which the shares of Grameen Phone Ltd. and Marico Bangladesh Ltd. were placed under spot market for trading	Directive	SEC/CMRRCD/2009-193/78 Dated: December 19, 2010
35	The members of the stock exchanges shall not extend credit facilities to their	Directive	SEC/CMRRCD/2001-43/79 Dated: December 19, 2010

μwgK bs	wel q	‡kYwefVM	m† bs
	approved clients beyond 1.5 (One point five) time of the clients' margin under the Margin Rules, 1999.		
36	gvtP@ e'vsKvi (tcvU#dwi I g'vfbRvi) KZK Dnvi g†°j† i†K weZiY†hvM' gvwRB F†Yi mtePP nvi 1 t 1.5 (A_@, g†°j ev M†n†Ki Znwe†j i t`o_Y)	Av† k	GmBwm/wmGgAvi Avi wm/2001-43/80 Zwi L: wW†m†† 19, 2010
37	Regarding asset revaluation and Book Building Method	Notification	SEC/CMRRCD/2009-193/81/Admin/03-57 Dated: December 29, 2010
38	Cancellation of certain directives regarding margin loan provided by members of the stock exchanges	Directive	SEC/CMRRCD/2009-193/82 Dated: December 29, 2010
39	Cancellation of certain directives regarding margin loan provided by the merchant bankers	Directive	SEC/CMRRCD/2009-193/83 Dated: December 29, 2010
40	Allowing Asset Management Companies to participate as eligible institutional investor, in the price discovery process, for determining indicative price as well as for bidding on account of specific mutual fund, under the Book Building Method	Notification	SEC/CMRRCD/2009-193/84/Admin/03-56 Dated: December 29, 2010
41	Cancellation of certain directive regarding margin loan provided by the members of the stock exchanges	Directive	SEC/CMRRCD/2009-193/85 Dated: December 30, 2010
42	Cancellation of certain directive regarding margin loan provided by the merchant bankers	Directive	SEC/CMRRCD/2009-193/86 Dated: December 30, 2010
43	Repeal of the Directive No. SEC/CMRRCD/2001-43/17 dated February 08, 2010 regarding financial adjustment facility in respect of trading in shares of Grameenphone Ltd.	Directive	SEC/CMRRCD/2009-193/87 Dated: January 09, 2011
44	Repeal of serial No. 1 of the Directive No. SEC/CMRRCD/2001-43/51 dated July 22, 2010 and the relevant portion of the Directive	Directive	SEC/CMRRCD/2009-193/88 Dated: January 09, 2011

μwgK bs	we l q	‡kYwefvM	m‡ bs
	No. SEC/CMRRCD/2001-43/53 dated July 25, 2010 regarding credit facility to individual clients by the members of the stock exchanges.		
45	gvtP@ e'vsKvi KZK †Kvb GKK e'w³ i AbK†j gwR® FY cŃvb c††½ Av†`k bs-GmBim/wmGgAvi Avi wmw/2001-43/52 Zwi L Rj vB 22, 2010Bs Gi μwgK bs-1 Ges Av†`k bs-GmBim/wmGgAvi Avi wmw/2001-43/54 Zwi L Rj vB 25, 2010Bs Gi mswkó Ask ewZj KiY	Av†`k	GmBim/wmGgAvi Avi wmw/2009-193/89 Zwi L: Rvbyqwi 09, 2011
46	Repeal of serial No. (b) of the Directive No. SEC/CMRRCD/2001-43/68 dated November 21, 2010 regarding credit facility to new clients by the members of the stock exchanges.	Directive	SEC/CMRRCD/2009-193/90 Dated: January 09, 2011
47	gvtP@ e'vsKvi KZK Dnvi bZb g†°j†`i AbK†j gwR® FY cŃvb c††½ Av†`k bs-GmBim/wmGgAvi Avi wmw/2001-43/69 Zwi L b†f²† 21, 2010Bs Gi μwgK bs-(L) ewZj KiY	Av†`k	GmBim/wmGgAvi Avi wmw/2009-193/91 Zwi L: Rvbyqwi 09, 2011
48	The members of the stock exchanges may extend credit facilities to their approved clients upto 2 (two) times of clients' margin/deposit under the Margin Rules, 1999.	Directive	SEC/CMRRCD/2009-193/92 Dated: January 10, 2011
49	gvtP@ e'vsKvi (†cvU†dwj l g'v†bRvi) KZK Dnvi g†°j†`i†K weZiY†hvM gwR® F†Yi m†ePP nvi 1 t 2 (A_†, g†°j ev M††Ki Znwe†j i `B_ Y)	Av†`k	GmBim/wmGgAvi Avi wmw/2009-193/93 Zwi L: Rvbyqwi 10, 2011
50	Repeal of (a) serial No. (1) of the Directive No. SEC/CMRRCD/2009-193/63 dated September 06, 2010 regarding netting facility in respect of non-marginable securities; and (b) SEC/CMRRCD/2009-193/72	Directive	SEC/CMRRCD/2009-193/94 Dated: January 10, 2011



μwgK bs	wel q	‡kYwefvM	m† bs
57	wmKDWi uJR I G. ‡PÄ Kwgkb (wgDP'qvj dvÜ) weagvj v, 2001 Gi ms†krab	cÄvcb	GmBwm/wmGgAvi Avi wmwW/2006- 157/101/cÄkmb/03-59 Zwi L: gvP©14, 2011
58	Repeal of the Directive No. SEC/CMRRCD/2009-193/100 dated February 10, 2011	Directive	SEC/CMRRCD/2009-193/102 dated April 10, 2011
59	Conditions for unlisted security under section 2CC of the Securities and Exchange Ordinance, 1969	Notification	SEC/CMRRCD/2009-193/103/Admin/03- 52 Dated: May 08, 2011

## 6. ÷K G. ‡PÄ Zvwj Kfv³

2010 -2011 A\_ eQti 9 uJ wgDP'qvj dvÜmn 19 uJ ‡Kv³uwb XvKv Ges PÆMög ÷K G. ‡PÄ Zvwj Kfv³ ntq†Q |  
D³ ‡Kv³cwbmgv Gi Z\_ w†æcw† teikZ ntj v:

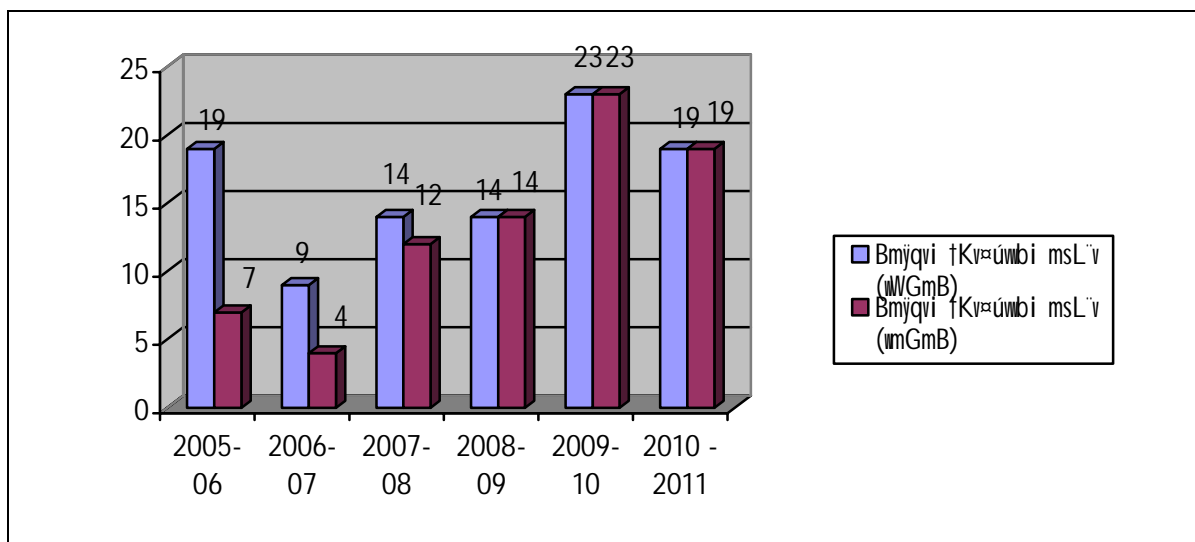
Bmjqv†i i bvg	cwi ‡kwaZ gj ab (†KwU UvKv)	Zvwj Kfv³i Zwi L
BDbvB†UW Gqvi I ‡qR (weW) wj t	200.00	08.07.2010
gv†j K w³ úwbs wj m wj t	160.00	29.07.2010
weKb dvg†mDwJK'vj m wj t	220.00	10.08.2010
dv÷ eRbZv e'vsK wgDP'qvj dvÜ	200.00	16.09.2010
M†b ‡Wëv wgDP'qvj dvÜ	150.00	23.09.2010
ccj vi j vBd dv÷ wgDP'qvj dvÜ	200.00	13.10.2010
AvBGdAvBGj Bmj wjK wgDP'qvj dvÜ-1	100.00	11.11.1010
wcGBPw dv÷ wgDP'qvj dvÜ	200.00	25.11.2010
GKwUf dvBb K'wgK'vj m wj t	40.00	11.11.2010
GAvBweGj dv÷ Bmj wjK wgDP'qvj dvÜ	100.00	05.01.2011
† k eÜzcwj gvi wj wg†UW	40.00	13.01.2011
e'vK e'vsK 25% mve AwWvU KbfwUej eÜm	300.00	02.02.2011
GgweGj dv÷ wgDP'qvj dvÜ	100.00	02.02.2011

m'vj t'fv K'wgK'vj B'w'w'aj t	40.10	18.04.2011 <sup>0</sup>
ei KZj øvn Btj KtUø WvqbwigKm vj t	86.00	16.05.2011
Gg.AvB. wmtgU d'v±wi vj t	100.00	18.05.2011
BweGj GbAvi we wDP'qvj dvU	150.00	16.05.2011
mvD_Bó e'vsK dv÷ 'wDP'qvj dvU	100.00	16.05.2011
gwej hgbv j weK'vUm weW vj t	180.32	22.06.2011

wemZ cuP eQti ÷ K G. t'p'Ä Zvwj Kvfy<sup>3</sup>i wPÎ wbtgæZtj aiv ntj v:

A_@Qi	Bmj'qvi t'Kv'úwbi msL'v	
	wWGmB	wmGmB
2010-2011	19	19
2009-10	23	23
2008--09	14	14
2007-08	14	12
2006-07	9	4
2005-06	19	7

Zvwj Kvfy<sup>3</sup>i wPÎ:







2008-09	7	82.00 (\u043c\u043b\u043d)	2389.29 (\u043c\u043b\u043d)	29.14
2009-2010	10	1398.92 (\u043c\u043b\u043d)	9125.96 (\u043c\u043b\u043d)	6.52
2010-2011	6	1122.40 (\u043c\u043b\u043d)	8,225.32 (\u043c\u043b\u043d)	7.33

g\u0430\u0431 \u0414\u0442\u0415\u0432\u0438 \u0431:

\u0446\u0432\u0435\u0439 \u041a \u0432\u0438 \u0432\u0433\u0440\u0430\u0434\u0438\u0442\u0430\u0432 \u0442\u0430\u0432\u0430\u043d\u0438\u0442\u0430:

\u0446\u0432\u0435\u0439 \u041a \u0432\u0438 \u0432\u0433\u0440\u0430\u0434\u0438\u0442\u0430\u0432 \u0442\u0430\u0432\u0430\u043d\u0438\u0442\u0430 \u0433\u0430 \u0430\u0431 \u0435\u0432\u0440\u0430 \u0420\u0431\u201c \u041a\u0438\u0433\u043a\u0431 2010-11 \u0410\_\u041e\u041e\u0442\u0438 Securities and Exchange Commission (Issue of Capital) Rules, 2001 \u0413\u0438 \u0410\u0430\u0442\u0431 100\u043c\u043b \u0446\u0432\u0435\u0439 \u041a \u0432\u0438 \u0442 \u0442\u0430\u0432\u0430\u043d\u0438\u0442\u0430 \u041a \u043c\u0432\u0430\u0432\u0438 \u0442\u0430\u043a\u0432\u0438, \u0442\u0435\u0432\u0431\u043c \u0442\u0430\u043a\u0432\u0438, \u0442\u0446\u0430\u0432\u0438 \u042f \u0442\u0430\u043a\u0432\u0438, \u0438\u0432\u0411\u0411 \u0442\u0430\u043a\u0432\u0438 \u0418 \u0435\u0411 \u0413\u0438 \u0433\u0432\u0430\u0442\u0433 7,688.79 \u0442\u041a\u043c\u0411 \u0411\u0432\u0430\u0432\u0438 \u0433\u0430 \u0430\u0431 \u0414\u0442\u0415\u0432\u0438 \u0442\u0430 \u0420\u0431\u201c \u043c\u0430\u0441\u0448\u0438\u0437 \u0446\u0411 \u0432\u0431 \u041a\u0442\u0438 \u0442\u0411 \u0434\u0432\u0438 \u0432\u0435 \u0432\u0435 \u0432\u0430\u0440\u0431 \u0432\u0430\u0442\u0433\u0430\u0446\u0411 \u0432\u0431 \u041a \u0438 \u0432 \u043d\u0442\u0430 \u0432:

\u0433\u0430 \u0430\u0431 \u0414\u0442\u0415\u0432\u0438 \u0442\u0430 \u0433\u0432\u0430\u0442\u0433	\u0442\u0430\u0432\u0430\u043d\u0438\u0442\u0430 \u043c\u0441\u0411\u0412	\u0442\u0433\u0432\u0411 \u0433\u0430 \u0430\u0431 (\u0442\u041a\u043c\u0411 \u0411\u0432\u0430\u0432\u0438)
\u043c\u0432\u0430\u0432\u0438 \u0442\u0430\u043a\u0432\u0438	70	5513.72
\u0442\u0435\u0432\u0431\u043c \u0442\u0430\u043a\u0432\u0438	19	854.17
\u0442\u0446\u0430\u0432\u0438 \u042f \u0442\u0430\u043a\u0432\u0438	3	435.00
\u0438\u0432\u0411\u0411 \u0442\u0430\u043a\u0432\u0438	4	85.90
\u043c\u0432\u0435 \u0410\u0412\u0430\u0432\u0430\u0442\u0430\u0432 \u0435\u0411	3	700.00
\u0431\u0431 \u041a\u0431\u0435\u0432\u0435\u0439 \u0410\u0432 \u0432\u0430\u0432\u041a \u0414\u0438 \u0412 \u0435\u0411	1	100.00
\u0442\u0433\u0432\u0411		7,688.79

\u0446\u0411 \u0442\u0411 \u0432\u0438 \u0432\u0433\u0440\u0430\u0434\u0438\u0442\u0430 \u0442\u0430\u0432\u0430\u043d\u0438\u0442\u0430:

2010-11 \u0410\_\u041e\u041e\u0442\u0438 \u041a\u0438\u0433\u043a\u0431 \u0446\u0411 \u0442\u0411 \u0432\u0438 \u0432\u0433\u0440\u0430\u0434\u0438\u0442\u0430 \u0442\u0430\u0432\u0430\u043d\u0438\u0442\u0430 \u0433\u0430 \u0430\u0431 \u0435\u0432\u0440\u0430 \u0420\u0431\u201c Securities and Exchange Commission (Issue of Capital) Rules, 2001 \u0413\u0438 \u0410\u0430\u0442\u0431 58\u043c\u043b \u0446\u0411 \u0442\u0411 \u0432\u0438 \u0442 \u0442\u0430\u0432\u0430\u043d\u0438\u0442\u0430 \u041a \u043c\u0432\u0430\u0432\u0438 \u0442\u0430\u043a\u0432\u0438, \u0442\u0435\u0432\u0431\u043c \u0442\u0430\u043a\u0432\u0438 \u0411\u043c\u0438 \u0433\u0432\u0430\u0442\u0433 1792.21 \u0442\u041a\u043c\u0411 \u0411\u0432\u0430\u0432\u0438 \u0433\u0430 \u0430\u0431 \u0414\u0442\u0415\u0432\u0438 \u0442\u0430 \u0420\u0431\u201c \u043c\u0430\u0441\u0448\u0438\u0437 \u0446\u0411 \u0432\u0431 \u041a\u0442\u0438 \u0442\u0411 \u0434\u0432\u0438 \u0432\u0435 \u0432\u0435 \u0432\u0430\u0440\u0431 \u0432\u0430\u0442\u0433\u0430\u0446\u0411 \u0432\u0431 \u041a \u0438 \u0432 \u043d\u0442\u0430 \u0432:

\u0433\u0430 \u0430\u0431 \u0414\u0442\u0415\u0432\u0438 \u0442\u0430 \u0433\u0432\u0430\u0442\u0433	\u0442\u0430\u0432\u0430\u043d\u0438\u0442\u0430 \u043c\u0441\u0411\u0412	\u0442\u0433\u0432\u0411 \u0433\u0430 \u0430\u0431 (\u0442\u041a\u043c\u0411 \u0411\u0432\u0430\u0432\u0438)
--	---	---

mvavi Y tkqvi	54	16792.09
tevbvm tkqvi	3	113.00
tcðvñi Ý tkqvi	1	0.99
tgU		1792.21

ivBUM&Bmj:

2010-2011 A\_°eQti Kugkb Securities and Exchange Commission (Rights Issue) Rules, 2006 Gi Aaxtb 29wU tKvúvbxk 2,550.73 tKwU UvKvi ivBUM Bmj m°gZ cðvb Kti tQ | 2009-10 A\_°eQti 7wU Zwj Kvfj tKvúvbxk 993.07 tKwU UvKvi ivBUM Bmj m°gZ cðvb Kiv ntqUj |

### 8. KtcñiU dvBb`vY

KtcñiU dvBb`vY wfvM tKvúvbxmgñi cð\_wgK MYcñie (IPO) cieZx°Kvhñg wmwKDwi wJR AvBñbi Avtj vtK Z`vi wK Kti \_vtK | D³ Z`vi wKi Avl Zvq KtcñiU dvBb`vY wfvM Bmjvqi tKvúvbxmgñi ewil R cñZte`b (Annual Report), wbi xññZ ewil R Awl R cñZte`b, wbi xññZ/A-wbi xññZ Aa°ewil R Awl R cñZte`b | wbi xññZ/A-wbi xññZ %ñ gvmK Awl R cñZte`b mgñ cixññ/vchññ vPbvñ Bmjvqi tKvúvbxmgñ KZR cñZñwñK mñvmb (Corporate Governance) cwí cvj b, wmwKDwi wJR AvBb tgvZvteK wewae x wbi xññK wbtqvM, cð\_wgK MYcñie gva`tg DñEwj Z gj añbi h\_vh\_ e`envi wñwñZKiY Z\_v cñRevRvñi mvt\_ mñkøó Bmjvqi tKvúvbxmgñi Awl R k;Lj v | cñZñwñK mñvmb cwí cvj b wñwñZ Kti \_vtK |

2010-2011 A\_°eQti KtcñiU dvBb`vY wfvM KZR MñxZ e`e`w` | m°úw` Z , iæZcY°Kvhññtgi mñññB weeiY wbt°ñDñj ðL Kiv nñj t

K) wbi xññZ Awl R cñZte`bt

Securities and Exchange Rules, 1987 Gi Rule 12 (3A) Abñvqx Bmjvqi tKvúvbxmgñ KZR Zvt`i wmwve ermi tkl nI qvi 120 w`ñbi gñ` mñkøó Awl R cñZte`b mgñ wbi xñññ mgvcbvñññ cieZx°14 w`ñbi gñ` D³ wmwve weeiYx mgñ Kugkb `wLñj i kZ°i tñtQ | tm Abñvqx KtcñiU dvBb`vY wfvM wñqñU Z`vi wK Kti \_vtK | h\_vmgñtq Bmjvqi tKvúvbx mgñ wbi xñññZ Awl R weeiYx `wLñj e`ññtj Kugkb Awl R weeiYx `wLñj e`ññBmjvqi tKvúvbxmgñi weiañt x kwññññ K e`e`v MñY Ki tQ | h\_vmgñtq Awl R weeiYx `wLñj bv Kivq 2010-2011 A\_°eQti 8wU tKvúvbxñi weiañt x GbtñvñññU e`e`v MñY Kiv ntñtQ | hvi dñj wbi xñññZ Awl R weeiYx wbaññi Z mgñtqi gñ` Kugkb `wLñj i cñYZv Dñj ðLñvM` nvti ewñ tñtñtQ |

wmwKDwi wJR AvBñbi mñkøó wewaweb Ges Institute of Chartered Accountants of Bangladesh (ICAB) KZR MñxZ International Accounting Standard (IAS) Abñvqx Bmjvqi tKvúvbxmgñi Awl R weeiYx mgñ cñZ Ges Dñvi h\_vh\_ e`vL`v Dc`vcñ Kiv nt`Q wKbv Zv wñqñgZfvte t`Lv nt`Q | G Qvovl , Bangladesh Standards on Auditing (BSA) Abñvqx wbi xñññ Kvh°m°úv`b Kiv nt`Q wKbv tm wñqñU |





Kugkb 2010-2011 A\_eQti wmkDwi uR I G. tPA Kugkb (÷K wVj vi, ÷K teiKvi I Abtgv` Z cõZibwa) weagvj v, 2000 I ZrcieZr`mstkvabx Abhvqx 50uU ÷K wVj vi / ÷K teiKvi ubeÜb mb` cõ vb Kti tQ Ges 507uU ubeÜb mb` bevqb Kti tQ hvi Zvij Kv **0cwi wko-100** tZ cõ vb Kiv nj |

÷K teiKvi t` i kvLv tLvj vi Abtgv` b:

Avtj vP` mgtq Kugkb XvKv ÷K G. tPA wj wgtUW Gi 112uU Ges PÆMög ÷K G. tPA wj wgtUW Gi 47uU teiKviti i bZb kvLv Awdm tLvj vi Abtgv` b cõ vb Kti tQ |

Abtgv` Z cõZibwa ubeÜb mb` cõ vb I bevqb:

Kugkb D³ 2010-2011 A\_eQti XvKv I PÆMög ÷K G. tPÄi ÷K teiKvi / wVj vi cõZõvb G KgPZ KgRZf/KgPvi xi AbKtj 1979uU Abtgv` Z cõZibwa ubeÜb mb` Bmj Kti tQ |

wWcuRUwi AskMõYKvixi ubeÜb mb` cõ vb I bevqb:

Dwij uLZ mgtq Kugkb, wWcuRUwi (e`enwi K) cõeavbgvj v, 2003 Gi Aaxtb 47uU cõZõvbi AbKtj wWcuRUwi AskMõYKvixi ubeÜb mb` cõ vb Kti tQ Ges 277uU wWcuRUwi AskMõYKvixi ubeÜb mb` bevqb Kti tQ hvi Zvij Kv **0cwi wko-110** tZ cõ vb Kiv nj |

mæu` e`e`vcK:

D³ A\_eQti wmkDwi uR I G. tPA Kugkb (wDPiqvj dvU) weagvj v, 2001 Gi Avl Zvq BDwbfvmfj dvBb`wYqvj miv Dkb wj wgtUW Ges tRwb\_ Bbt f ÷ tgvU wj wgtUW Gi AbKtj mæu` e`e`vcK ubeÜb mb` Bmj Kti tQ | G chSf tgvU 14uU mæu` e`e`vcKtKi ubeÜb mb` Bmj Kti ntqtQ hv wæfj:

µwg K bs	tKvæuwb i bvg	wKv bv
01.	AvBimie GtmU g`vtbRtgvU tKvæuwb wj t	wGmwe wewi s 8, i vRDK GwfvbD (16 Zj v) XvKv-1000
02.	G`vtmU GÜ Bbt f ÷ tgvU g`vtbRtgvU mwv f fmm evsj vt` k wj wgtUW (GBgm)	BDwbK tUW tmvUvi tj t f j -6 (GmWweD) 8, cvŠc_, KvI i vb evRvi XvKv-1215
03.	Gj -Avi tMvej evsj vt` k G`vtmU g`vtbRtgvU tKvæuwb wj wgtUW	1003, XvKv ÷K G. tPA wewi s (10 Zj v) 9/B gwZwSj ewYwR`K Gj vKv XvKv-1000
04.	evsj vt` k wki FY ms`v	wGmAvi Gm feb 12 KvI i vb evRvi

		XvKv-1217
05.	‡i Bm g'vfbRtgU c0BtfU tKv=úmb wj wgtUW	wGBPIU tm>Uvi , dvU bs 06, moK bs 04, eK-Gd ebvbx, XvKv-1213
06.	c0Bg dvBb'vY G'vfmU g'vfbRtgU tKv=úmb wj wgtUW	63, w`j Kkv ewYwR`K Gj vKv XvKv-1000
07.	wfAvBwwe G'vfmU g'vfbRtgU tKv=úmb wj t	114, kwsbMi , XvKv-1217
08.	Avij d G'vfmU g'vfbRtgU tKv=úmb wj t	wcweGj Uvl qvi (13 Zj v) 17, _j kvb b_`KgwKqj Gwi qv, XvKv
09.	b'vkbvj G'vfmU g'vfbRtgU wj wgtUW	mjU bs 310, mRvb Uvl qvi 1,4 tm_b ewMPv, XvKv-1000
10.	Bbtf ÷ Gwkqv K'wclvj G'vfmU g'vfbRtgU wj wgtUW	ewo bs 14/1-wW (3q Zj v), tiwW bs 4, avbgU XvKv-1205
11.	Gwkqvb UvBmvi K'wclvj cvU0vmG'vfmU g'vfbRtgU wj wgtUW	BDUwm wevi s, tj tfj -16 8, cvšC_, XvKv-1215
12.	G'vj vqY K'wclvj G'vfmU g'vfbRtgU wj t	87, i vfk` Lvb tgbv tiwW (wbD B`wUv tiwW) tj tfj -15, XvKv-1000
13.	BDvbFvmfj dvBb'wYqvj mij Dkb wj wgtUW	Behwng g'vbkv (60 Zj v) 95 gwZwSj ewYwR`K Gj vKv XvKv-1000
14.	‡Rwb_ Bbtf ÷ tgsU wj wgtUW	i ngvb ‡i Mgvb tm>Uvi (7g Zj v) 191/w, ‡ZRMuI , _j kvb wj sK tiwW, XvKv-1208

Uw= wbeÜb mb` c0 vb:

D<sup>3</sup> mgtq wmwKDwi wJR I G- ‡PÄ Kwgkb (wgDPzqvj dvU), wewagj v, 2001 Gi Aaxfb AMYx e'vsK wj wgtUW, wclWwvj wJ G'vfmUm& GÜ wmwKDwi wJR wj wgtUW Ges AvBwwe K'wclvj g'vfbRtgU wj wgtUwWi AbKtj Uw÷ wbeÜb mb` c0 vb Kti tq|

gvfPw e'vsK:

cwRevRvti wmwKDwi wJtRi mi eivn evovtvi e'vcvti gvfPw e'vsKvi MY Dti LthvM' fwgKv cvj b Kti \_vtK| gvfPw e'vsKvi MY Bmj qvi tKv=úmbi Bmj e'e'vcK, Aetj LK I cwRevRvti wewtqMKvixt i tcvUfdwvj I e'e'vcK wntmte ga`ZvKvixi KvR Kti \_vtK|

2010-2011 A\_eQtI Kwgkb wmwKDwi wJR I G- ‡PÄ Kwgkb (gvfPw e'vsKvi I tcvUfdwvj I g'vfbRvi) wewagj v, 1996 Gi

Avl Zvq wbtPwDwj mLZ c0Z0vb Gi AbKtj gvtPw e'vsKvi wbeUb mb` Bmj Kti tQ|

- 01| RbZv K'wvcUvj GÜ Bbtf ÷ tgvU wj wgtUW
- 02| hgbv e'vsK K'wvcUvj g'vfbRtgU wj wgtUW
- 03| Avj dv K'wvcUvj g'vfbRtgU wj wgtUW
- 04| M0b tW0v Gj Avi dvBb'wYqvj mwfFmm wj wgtUW
- 05| wmiU e'vsK K'wvcUvj wi tmtm0 wj wgtUW
- 06| GgwUwe K'wvcUvj wj wgtUW
- 07| GGG Kbmj tU>U GÜ dvBb'wYqvj G'wWfvBRvm0 wj wgtUW
- 08| U0 ÷ e'vsK Bbtf ÷ tgvU wj wgtUW
- 09| tmbvj x Bbtf ÷ tgvU wj wgtUW
- 10| Gw g Bmj vgx Bbtf ÷ tgvU wj wgtUW
- 11| mvD\_B ÷ e'vsK K'wvcUvj mwfFmm wj wgtUW
- 12| c0Bg dvBb'vY K'wvcUvj g'vfbRtgU wj wgtUW
- 13| Km0gv dvBb'wYqvj mwfFmm wj wgtUW
- 14| dv ÷ wmiKDwi uJ Bmj vgx K'wvcUvj GÜ Bbtf ÷ tgvU wj wgtUW
- 15| GGdim K'wvcUvj wj wgtUW
- 16| iq'vj M0b K'wvcUvj gvtK0 wj wgtUW
- 17| ti Bm tcvU0dwj l GÜ Bmj g'vfbRtgU wj wgtUW
- 18| GbweGj K'wvcUvj GÜ BKzBilU g'vfbRtgU wj wgtUW

GQvov D³ A\_0eQti Kvgkb wmiKDwi uJR l G\_ tPÄ Kvgkb (gvtPw e'vsKvi l tcvU0dwj l g'vfbRvi) wewagvj v, 1996 Gi Avl Zvq 8wU gvtPw e'vsKti AbKtj 18wU bZb kvLv tLvj vi Ab0gv` b w` tqtQ|

tPwWU ti wJs tKv0vmb:

wewbtqvM wmxvšl M0tYi t0t0 tPwWU ti wJs GKilU AZ'šl \_iæZcy0FvgKv cvj b Kti | wewbtqvMKvi xMY tKv0vmbi tPwWU ti wJs wetePbv Kti tKvb tKv0vmbi Avw\_0 Ae'v, e'e'vcbv `0Zvmm mwe0 Ae'v m00tK0AeMZ ntZ cvti | Kvgkb Credit Rating Companies Rules, 1996 Gi Aaxtb Credit Rating Information and Services Ltd. (CRISL), Credit Rating Agency of Bangladesh Ltd. (CRAB), National Credit Ratings Limited and Emerging Credit Rating Ltd. bvtg Pvi uJ c0Z0v0tbi AbKtj wbeUb mb` c0vb Kti tQ| G Pvi uJ ti wJs tKv0vmb hvtZ Avi l ^0Zv l e'w00fvte ti wJs Kvh0vg m00beKti tm Rb' Kvgkb International Organization of Securities Commission (IOSCO) KZ0 c0vZ ti wJs tKv0vmb mg0ni Rb' Abjmi Yvq Code of Conduct cwi cvj tbi Rb' wbt` Rbv c0vb Kti tQ

wmiKDwi uJ Kv ÷ wWqv b wbeUb mb` Bmj :



mmKDwi wJ Kv÷wWqvb A\_©mmKDwi wJ Kv÷wWqj tmev (thgb: MõntKi mmKDwi wJ wbcv` tndvRtZ ivLv, MõntKi mmKDwi wJ I Znwejtj i mmve msi ¶Y, msikø0 mmKDwi wJi wecixtZ Avq, jvf, AR0 ntq \_vKtj Zv msMõ, mmvef³ I AewnZKiY BZ`w`) c0vtbi Rb` wbeÜb mb` c0B c0Z0vb | mmKDwi wJ Kv÷wWqvb wntmte KvR Ki tZ ntj mmKDwi wJ I G. tPÄ Kvgkb (mmKDwi wJ Kv÷wWqj tmev) weagvj v, 2003 Gi Aaxtb wbeÜtbi c0qvRb nq |

2010-2011 mgqKvtj Kvgkb mmKDwi wJ I G. tPÄ Kvgkb (mmKDwi wJ Kv÷wWqj tmev) weagvj v, 2003 Gi Aaxtb AMÿx e`vsK wj wgtUW Ges AvBimmie K`wcvUvj g`vtbRtq:U wj wgtUW Gi AbKtj mmKDwi wJ Kv÷wWqvb wbeÜb mb` Bmj Kti tQ |

## 10. wDPzqvj dvÜ I Gmncwf

wDPzqvj dvÜ I m`ú` wfwEK mmKDwi wJ Ri wbeÜb c0vb, chfe ¶Y, Z`viwK Ges G mspvšl Ab`vb` Kvhfug cwipj bvi Dfí`tk` gvP<sup>16</sup>, 2009 Zwi tL wDPzqvj dvÜ I Gmncwf (GgGd GÜ Gmncwf) wfvM c0Zw0Z nq |

GgGd GÜ Gmncwf wfvM KZR 2010-2011 A\_©Qtí m`úw` Z Kvhfej x wbgjfc:

- BieGj GbAvi we wDPzqvj dvÜ (tgqv`x) Gi U÷ Ww Abtgv` b ntZ i iæ Kti ÷K G. tPÄ Zwj Kvfj³ chšl hveZxq Kvhfej x m`úv` b Kiv nq |
- GbGj AvB dv÷©wDPzqvj dvÜ (tKwRW GÜ), tmvbj x e`vsK wj wgtUW dv÷©wDPzqvj dvÜ (tKwRW GÜ), dv÷©AMÿx e`vsK wDPzqvj dvÜ (tKwRW GÜ), ifcvj x jvBd BÝjtíÝ dv÷©wDPzqvj dvÜ (tKwRW GÜ), GbimmieGj wDPzqvj dvÜ -I qvb (tKwRW GÜ), c0Bg dvBb`vÝ tmKÜ wDPzqvj dvÜ (tKwRW GÜ), dv÷©evsj vt`k wd· W BbKvg dvÜ (tKwRW GÜ), Gw g e`vsK dv÷©wDPzqvj dvÜ (tKwRW GÜ), mUvbx jvBd tMÜ dvÜ (tKwRW GÜ), Gw g e`vsK dv÷©wDPzqvj dvÜ (tKwRW GÜ), cÜv Bmj vgx jvBd dv÷©wDPzqvj dvÜ (tKwRW GÜ) Ges evsj vt`k dvÜ (tetgqv`x) Gi U÷ Ww Abtgv` b ntZ i iæ Kti Gmtpv GKvDvU tLv v chšl Kvhf x m`úv` b Kiv nq hvi avivewnKZvq cieZPA\_©Qtí Aewkó Kvhfej x m`úv` b Kiv nte |
- MõbtWèv wDPzqvj dvÜ, GAvBieGj dv÷©wDPzqvj dvÜ, AvBGdAvBGj Bmj wK wDPzqvj dvÜ-1, ccjvi jvBd dv÷© wDPzqvj dvÜ, c0Bg dvBb`wYqvj dv÷©BDwbU dvÜ (tetgqv`x), GgieGj dv÷©wDPzqvj dvÜ, dv÷©RbZv e`vsK wDPzqvj dvÜ Ges wGBPw dv÷©wDPzqvj dvÜ Gi Abtgv` b mspvšl Kvhfug ce©ZPA\_©Qtí i iæ ntq Avtj vP` A\_©Qtí Zwj Kvfj³ chšl Aewkó Kvhf m`úv` b Kiv nq |
- Gj Avi tMvej evsj vt`k wDPzqvj dvÜ I qvb Gi c0tccvmm Ges Gi GeRW fvm0 Abtgv` b chšl Kvhfej x m`úv` b Kiv nq hvi avivewnKZvq cieZPA\_©Qtí Aewkó Kvhfej x m`úv` b Kiv nte |
- wAvBwcie GbAvi we tMÜ dvÜ (tKwRW GÜ), DEiv wdbvÝ dv÷©wDPzqvj dvÜ (tKwRW GÜ), dvi Bó Bmj vgx jvBd BÝjtíÝ dv÷© wDPzqvj dvÜ (tKwRW GÜ), wevRAvBwm wDPzqvj dvÜ (tKwRW GÜ), GbimmieGj GbAvi we wDPzqvj dvÜ (tKwRW GÜ), Gg wJ we wDPzqvj dvÜ, KwUtbUvj BÝjtíÝ dv÷©wDPzqvj dvÜ Ges Gie e`vsK dv÷©wDPzqvj dvÜ Gi U÷ Ww Abtgv` b Gi Kvhf x m`úv` b Kiv nq Ges cieZPA\_©Qtí Aewkó Kvhfej x m`úv` b Kiv nte |
- wj vtqÝ I qvb0`v dv÷©` w Ad wj vtqÝ BÝjtíÝ wDPzqvj dvÜ (tKwRW GÜ) Gi Abtgv` b mspvšl Kvhfug ce©ZPA\_©Qtí i iæ ntq Avtj vP` A\_©Qtí j Uvix Abpwb chšl Kvhf m`úv` b Kiv nq hvi avivewnKZvq cieZPA\_©Qtí Aewkó Kvhfej x m`úv` b Kiv nte |

- GQovovl G wefvM Avtj vP" mgta cR evRvti eZgub cwi wZi tcltZ wjvtqY I qvB`v dv÷-ag Ad wjvtqY BÝjti Y wgdPzqj dvÜ, GbGj AvB dv÷-wgdPzqj dvÜ (tKvRW GÜ), mvD\_Bó e`vsK dv÷-wgdPzqj dvÜ, tmbvix e`vsK wj wgtUW dv÷-wgdPzqj dvÜ (tKvRW GÜ) Ges dv÷-AMx e`vsK wgdPzqj dvÜ (tKvRW GÜ), ifcj x j vBd BÝjti Y dv÷-wgdPzqj dvÜ (tKvRW GÜ), GbmimieGj wgdPzqj dvÜ -I qvb (tKvRW GÜ), cÜBg dvBb`vÝ tmtKÜ wgdPzqj dvÜ (tKvRW GÜ), dv÷-evsj vt`k wcl· W BbKvg dvÜ (tKvRW GÜ), Gw g e`vsK dv÷-wgdPzqj dvÜ (tKvRW GÜ), BweGj GbAvi we wgdPzqj dvÜ Ges Gj Avi tMvej evsj vt`k wgdPzqj dvÜ I qvb, mÜvbx j vBd tMÜ dvÜ (tgqv`x), evsj vt`k dvÜ (tetgqv`x), cÜv Bmj vgx j vBd dv÷-wgdPzqj dvÜ (tgqv`x)- dvÜmgñi Df`v³vi Ask cR evRvti webtqM Gi Abtgv`b mspvšl Kvhfej x m³v`b Kti |
- GQovovl G wefvM wgdPzqj dvÜmgñi gubUwi s mspvšl Kvhfej x wbgwZfvte Pwj tq hvf`Q|

## 11. mvtfBj`vÝ

wmKDi wR tj bt` tbi mvtfBj`vÝ :

webtqMKvix`i t`v`ci qv Ges cR evRvti t`QZv eRvq ivLtz Kugkb ÷K G· tPÄtqi Ab-j vBb mvtfBj`vÝ cÜwZi gva`tg cR evRvti mvtfBj`vÝ Kvhfej cwi Pvj bv Ki tQ | gvtkÜ g`vbcj kb mbr³KiY, cÜvi Yvgj K fvte gj` evovbv-Kgvtbv Ges cR evRvti mspvšl AvBb f½ ti vtai cÜ wK wqšK ntj v ÷K G· tPÄ | mvtfBj`vÝ cÜwZi KvhRvixZv wlvDZ Kivi Rb` GmBim ÷K G· tPÄi Kvhfej Dci mveqWYK mZR`wó ivL | GmBim Ab-j vBb Ges Ad-j vBb cÜwZtz evRvi mvtfBj`vÝ chfej Y Kti | Gwwei FY mnvqZvq GmBimi mvtfBj`vÝ mdUl q`vi t`vctbi KvR Pj tQ |

cwi`kÜ I Z`šl:

tqvi tj bt` tbi gva`tg wmKDi wR mspvšl tKvb AvBb j sNb ntqtQ wKbv Ges tj bt` tbi tKvbi fc Awbqg ntqtQ wKbv ev tKvb cÜvi A`vfwekZv AvtQ wKbv Zv LjR tei Kivi Rb` eZgub mvtfBj`vÝ wefvM On-Line Ges Off-Line evRvi mvtfBj`vÝ cÜwZ AbmY Ki tQ | On-Line mvtfBj`vÝ Gi Ask wmvte mvtfBj`vÝ wefvMi KgRZMY KwúDUvti Atj bt` bx I mvtfBj`vÝ mcll q`viti gva`tg t`bw`b tj bt` b chfej Y Ktib Ges tj bt` b cieZx`GKw cÜzte`b` Zwi Ktib hvfZ cÜw tbi tj bt` tbi GKw mvi-msqj c I tKvbi fc A`vfwekZv NtU vKtj Zv Ztj aiv nq | Abw` tK Off-Line mvtfBj`vÝ Gi Ask wmvte Kugktbi wR`^mdl q`vi (SECAS) e`envti gva`tg tj bt` b cieZx` i Kvi x Z` msMh Kti Zv wekIY Kiv nq | wekIYi ci hw we`wv Z AbmÜvtbi cÜqvRb nq Zvntj cwi`kÜ I Z`šl Kugw MVb Kti cÜzte`b tck Kivi Rb` cÜve Kiv nq | tckKZ cÜzte`b cÜB Zt` hw tKvbi fc wmKDi wR mspvšl AvBb f½i cÜvY cvlqv hvq Zvntj Zv cieZx`e`v MhYi Rb` GbtvdmfgU wefvM tclY Kiv nq |

tqvti i tj bt` b Bmjtz mvtfBj`vÝ wefvM KZR D`wvUZ eZgub A`eQi mn weMZ 2 ( `B) A`eQti i Zj bvgj K m³`nRbK Awbqgi msL`v Ges cieZx`e`v MhYi mswqB weei Y wbtgDc`wmcZ nj t

D`wvUZ m³`nRbK Awbqgi msL`v	÷K-GKtPÄ tclY	cwi`kÜ	Z`šl	GbtvdmfgU wefvM tclY	wbeÜb wefvM tclY	GmAvi Gg AvBim wefvM tclY	wmWGm wefvM tclY
-----------------------------	---------------	--------	------	----------------------	------------------	---------------------------	------------------

A_@eQi		WGMb tZ	WGMb tZ						
		tc0Y	tc0Y						
2010-201	41	17	8	21	20	29	0	1	0
2009-201	33	8	3	19	14	16	0	0	0
2008-200	36	5	6	28	8	9	0	0	1

WcRUi AskMhYKvix`i KgRvU Z`viuKi cvkvcnk `b b evRvi chfey, AvKwSK cwi`k I wbcqgZ gwmK cwi`k bi gva`tg mvtfBj`vY wfvM Mi KgRvU MiZKxj Zv epK Kiv ntqtQ| hvi dtj `jz`wbtqvMKvix`i gta` tkqvi evRvMi wbtqvM AvMh mjo Ges me`ti wbtqvMKvix`i gta` Av`v epK cit`Q| AvMgx eQi `tjvtZI mvtfBj`vY wfvM wbcqgZ KgRvU cvkvcnk Gukqvb tWtfvj`vctgU e`vsK (GwWic) Gi mnvqZvq K`wUvj gvKfU mvtfBj`vY cxwZi Dbqtb `iaZcy`fugKv cvj b Kite|

## 12. mpcvi wfkb GÜ ti `tj kb Ae gvKÖm GÜ Bmjvqi tKv`úwlbR (GmAvi GgAvBwm)

mpcvi wfkb GÜ ti `tj kb Ae gvKÖm GÜ Bmjvqi tKv`úwlbR wfvM ÷K G· tPÄ, I fvi w` KvDxUvi (OTC) Ges Bmjvqi tKv`úwlb mgfni hveZxq Kvh` wmwKDwi wJR AvBb Abhvqx cwi Pwj Z nt`Q wKbv Zv Z`viuK Kti `vtK| GÖvovl Bmjvqi tKv`úwlb mgfni weiaet` AwfthvM/ AvcWÉ wmwKDwi wJR AvBb tgvZvteK w`úwÉ Kti `vtK| wbtgöGB wfvM Mi KgRvU Ztj aiv ntj v-

- (K) Zvwj Kvfyß tKv`úwlb i Df`v`v/cwi Pvj Kti i wmwKDwi wJR µq/wepµq/n`lšli mspvšl tNvl Yv gubUi Kiv|
- (L) Df`v`v/cwi Pvj Kti i gwmK tkqvi tnwli s cwrKb gubUi Kiv|
- (M) Zvwj Kvfyß tKv`úwlb gj` mste`bkxj Z` tNvl Yv gubUi Kiv|
- (N) Zvwj Kvfyß tKv`úwlb tkqvi ÷K G· tPÄi ewnti n`lšli Abtgv`b Kiv|
- (O) ÷K G· tPÄi (wmwKDwi wJ tj bt`b e`ZxZ) hveZxq Kvhµg gubUi Kiv|
- (P) cRvRvvi msvkø AwfthvM mgn w`úwÉi Rb` KvhKi e`v` MhY Kiv|

Rj vB 2010- Rb 2011 mgtq Abjöz ewl R mvari Y mfv Ges DnvZ tNwl Z j f`vsk mspvšl Z`w` wbtgö Qtk cÖ É ntj v|

e`vsK t±i					
µgK	bvg	mgvß ermi	ewl R mvari Y	j f`vsk cÖ vbi kZKiv wmwve	
bs			mfv Abjvbi	bM` j f`vsk	tebvM tkqvi

			Zwi L		
01	b'vkbyj e'vsK wj wgtUW	201012	15/03/11	-	95% we
02	mvD_Bó e'vsK wj wgtUW	201012	22/03/11	10	20% we
03	WvPevsj v e'vsK wj wgtUW	201012	24/03/11	30	-
04	eik e'vsK wj wgtUW	201012	24/03/11	10	20% we
05	cÜBg e'vsK wj wgtUW	201012	27/03/11	5	35% we
06	wgDP'qvj Uíó e'vsK wj wgtUW	201012	28/03/11	-	20% we
07	I qvb e'vsK wj wgtUW	201012	28/03/11	-	55% we
08	XvKv e'vsK wj wgtUW	201012	29/03/11	-	20% we
09	Bóvb'e'vsK wj wgtUW	201012	30/03/11	-	55% we
10	e'vsK Gwkqv wj wgtUW	201012	30/03/11	-	40% we
11	w' wctóqvj e'vsK wj wgtUW	201012	06/04/11	-	31% we
12	ce'vj x e'vsK wj wgtUW	201012	24/04/11	5	35% we
13	b'vkbyj Kgvn'GÜ tµwU e'vsK wj wgtUW	201012	28/04/11	-	32% we
14	fmw'vj Bb'fótg'u e'vsK wj wgtUW	201012	28/04/11	-	14% we
15	kvnRvj vj Bmj vgx e'vsK wj wgtUW	201012	09/05/11	-	30% we
16	DÉiv e'vsK wj wgtUW	201012	15/05/11	20	20% we
17	÷'vÜw'e'vsK wj wgtUW	201012	16/05/11	-	28% we
18	Bmj wvg e'vsK wj wgtUW	201012	18/05/11	-	35% we
19	hgbr e'vsK wj wgtUW	201012	19/05/11	-	22% we
20	i'cvj x e'vsK wj wgtUW	201012	19/05/11	-	10% we
21	BDbrBtUW Kgvn'qvj e'vsK wj wgtUW	201012	30/05/11	-	25% we
22	Avj -Avi vdv Bmj vgx e'vsK wj wgtUW	201012	06/06/11	-	26% we
23	Uíó e'vsK wj wgtUW	201012	07/06/11	-	20% we
24	Gw' g e'vsK wj wgtUW	201012	09/06/11	-	35% we
25	AvBwwe Bmj vgx e'vsK wj wgtUW	201012	21/06/11	ky' -	-

wdb'wYqvj BbwüJDKb tµ±i					
µwgK bs	big	mgvß ermi	ewl R' m'vavi Y mfv Abp'vbi Zwi L	j f'vsk cÜv'tbi kZKiv wnmve	
				bM' j f'vsk	tevbwm tkqvj
01	j sKv e'vsj v dvBb'vY wj wgtUW	201012	27/03/11	-	55% we
02	cÜBg dvBb'vY wj wgtUW	201012	29/03/11	-	80% we
03	B'Uvi b'vkbyj wj wRs	201012	30/03/11		60% we
04	AvBwGj wv	201012	31/03/11	35	65% we
05	dvó wj R B'Uvi b'vkbyj	201012	21/04/11	-	25% we
06	BDwbqb K'wclvj	201012	25/04/11	-	75% we
07	wccj m&wj wRs	201012	02/05/11	-	75% we
08	wAvBGdwm	201012	12/05/11	-	25% we
09	Bmj wvgK dvBb'vY	201012	19/05/11	-	16% we
10	wctóqvj wj wRs	201012	25/05/11	-	20% we
11	DÉiv dvBb'vY	201012	30/05/11	-	40% we
12	BDbrBtUW wj wRs	201012	09/06/11	7.5	75% we

13	AvBwclWm	201012	14/06/11	-	10%we
14	wclWwj wJ G'vfmU	201012	16/06/11	-	15%we
15	dwb- wdbvY	201012	16/06/11	-	35%we
16	evsj v` k dvBb'vY	201012	21/06/11	-	22%we
17	b'vkbyj nvDwRs dvBb'vY GÜ BbtfótgU	201012	22/06/11	10	10%we
18	te wj wRs	201012	22/06/11	10	55%we

BwÄwbqwi s tm±i					
µwgK bs	bvg	mgvß ermi	ewl R mvavi Y mfv Abpvtbi Zwi L	j f'vsk c0vftbi kZKiv wnmve	
				bM` j f'vsk	tevbvm tkqvi
01	Avtbvqvi M'vj FvbwBwRs	20106	24/03/11	kY"	-
02	Gm Avj g tKvi i`j W óxj m&wj wgtUW	201009	30/03/11	5	10%we
03	wm½vi evsj v` k	201012	27/04/11	600(dvBbvj )	75% we
04	evsj v` k j`v=úm	201012	11/05/11	5	-
05	we GmAvi Gg óxj wj m&	201012	31/05/11	-	20%we
06	evsj v` k _vB Gtj wgvbqvg	201012	04/06/11	-	25% we
07	†Mvfi b mb wj wgtUW	201012	18/06/11	5	10%we
08	†K GÜ wKD	201012	23/06/11	-	5%we
09	i scj dwÜª	201012	23/06/11	21	-
10	GbbyRtj ó'vdj vi m	201012	27/06/11	15	-
11	Bóvb®K'vej m&	201012	28/06/11	10	-
12	AwRR cvBcm	201012	29/06/11	-	kY"

dW GÜ Gj vBW tm±i					
µwgK bs	Bvg	mgvß ermi	ewl R mvavi Y mfv Abpvtbi Zwi L	j f'vsk c0vftbi kZKiv wnmve	
				bM` j f'vsk	tevbvm tkqvi
01	gv†K@vBj e'vsk wj wgtUW	201012	11/04/11	-	22% we
02	weGvUweim	201012	10/04/11	430	-
03	weP n'vPvi x	201012	31/05/11	-	15 % we
04	gWvb®BÜwóR evsj v` k wj wgtUW	201012	02/06/11	-	-
05	tesMj we`v wj wgtUW	201012	30/06/11	-	-

dtqj GÜ cvl qvi tm±i					
µwgK bs	bvg	mgvß ermi	ewl R mvavi Y mfv Abpvtbi Zwi L	j f'vsk c0vftbi kZKiv wnmve	
				bM` j f'vsk	tevbvm tkqvi
01	evsj v` k l tqwi s Btj KtUwWm wj wgtUW	200912	03/07/10	-	15% we
02	wZnmv M'vm UtYwgb GÜ wWóteDkb tKvs	201006	28/12/11	15	10%we
03	†Wt`v	201006	03/01/10	15	30% we

04	cvl qvi wMW	201006	05/02/11	10	15% we
05	Bovb <sup>g</sup> je <sup>t</sup> K>Lz	201006	19/02/11		
06	tgNbv t<0Uw <sup>ij</sup> qvg	201006	07/05/11	45	5% we
07	wel m evsj v <sup>t</sup> k	201012	12/05/11	100(dvBbvj )	-
08	hgbr l tqj	201006	14/05/11	30	20%we
08	evsj v <sup>t</sup> k l tqw <sup>s</sup>	201012	16/05/11	5	10%we
09	mvgU cvl qvi wj wgtUW	201012	26/05/11	-	30%we
10	Lj bv cvl qvi tKvs wj wgtUW	201012	12/06/11	-	20%we

Jla l i mvqb tm±i					
μwgK bs	Bvg	mgvß ermi	ewl R mvavi Y mfv Abpv <sup>t</sup> bi Zwi L	j f'vsk c0 v <sup>t</sup> bi kZKiv wmwve	
				bM` j f'vsk	tevbvm tkqvi
01	qvi dvg <sup>m</sup> DwKK <sup>vj</sup> m wj wgtUW	gvP <sup>10</sup>	21/09/2010	35	30% we
02	Bvgv evUb BÜwóR wj wgtUW	Rb, 2010	15/12/2010	-	10% we
03	dvg <sup>g</sup> GBWm wj wgtUW	Rb, 2010	23/12/2010	30	500% we
04	tKwmbj K <sup>v</sup> wgK <sup>vj</sup> m tKvs (weW) wj wgtUW	Rb, 2010	23/12/2010	40	-
05	tKqv Km <sup>t</sup> gwJKm <sup>wj</sup> wgtUW	Rb, 2010	25/12/2010	15	-
06	tKqv wWUvi tR>U wj wgtUW	Rby 2010	25/05/2010	10	-
07	wj eiv BbwcdDkb wj wgtUW	Rb, 2010	26/12/2010	20	-
08	evsj v c0mm BÜwóR wj wgtUW	Rb, 2010	28/12/2010	-	-
09	wKb dvg <sup>m</sup> DwJK <sup>vj</sup> m wj wgtUW	Rb, 2010	30/12/2010	-	-
10	I qvUv tKwgK <sup>vj</sup> m wj wgtUW	wR <sup>t</sup> m <sup>t</sup> , 2004- 2010	11/11/2010	-	-
11	M <sup>t</sup> v w <sup>z</sup> j vBb	201012	28/04/2011	200	-
12	G <sup>v</sup> KwJf dvBb tKwgK <sup>vj</sup> m wj wgtUW	201012	09/06/2011	-	15% we
13	t <sup>i</sup> wKU webwKmvi (weW) wj wgtUW	201012	15/06/2011	50(dvBbvj )	-
14	GwmAvB di tgv <sup>t</sup> j kbm wj wgtUW	201012	15/06/2011	30	-
15	GwmAvB wj wgtUW	201012	15/06/2011	120	-
16	t <sup>i</sup> tbUv wj wgtUW	201012	18/06/2011	60	25% we
17	w <sup>t</sup> Be <sup>t</sup> b wmbv	201012	23/06/2011	10	20% we
18	g <sup>v</sup> wi tKv evsj v <sup>t</sup> k wj wgtUW	201103	28/06/2011	20.00 (dvBbvj )	-
19	Ggwe dvg <sup>g</sup>	201012	30/06/2011	30	-
20	te <sup>w</sup> g <sup>t</sup> Kv wmb <sup>t</sup> wJKm	201012	30/06/2011	-	15% we
21	t <sup>c</sup> tU <sup>t</sup> wmb <sup>t</sup> wKU t<0WvKUm wj wgtUW	201012	16/06/2011	120	-
22	t <sup>i</sup> v <sup>t</sup> cwJKm (weW) wj wgtUW	201012	23/06/2011	60	25%we
23	i ngvb tKwgK <sup>vj</sup> m wj wgtUW	201012	28/06/2011	10	20% we
24	I qvUv tKwgK <sup>vj</sup> m wj wgtUW	201103	30/06/2011	10	

tU· UvBj tm±i					
μwgK bs	bvg	mgvß ermi	ewl R mvavi Y mfv Abpv <sup>t</sup> bi	j f'vsk c0 v <sup>t</sup> bi kZKiv wmwve	
				bM` j f'vsk	tevbvm tkqvi

			Zwi L		
01	GBP Avi tU· UvBj	201009	28/03/2011	5	10% we
02	Avi Gb w®uibs	201012	21/04/2011	-	30%we
03	†mvi Mul tU· UvBj	201012	14/05/2011	-	30% we
04	mvd†Kv w ub	201012	26/05/2011	-	16% we
05	qvi tU· UvBj	201012	16/06/2011	-	20% we
06	te· tU·	201012	30/06/11	-	15%we
07	Avi ex tU· UvBj	201012	25/04/11	-	-
08	Kv†kg tU· UvBj	200309- 201009	30/04/2011	-	-
09	Kv†kg ime wj m	200309- 201009	30/04/2011	-	-
10	gby†dwe <sup>a</sup>	201012	29/06/2011	-	-

†ccvi GÜ wciUs tm±i					
µwgK bs	big	mgvß ermi	ewl R mvavi Y mfv Abp†bi Zwi L	j f'vsk c0†bi kZKiv wmwve	
				bM` j f'vsk	tebvm tkqvi
01	niKpbcv† GÜ †ccvi wj m wj wgtUW	Rp, 2010	15/12/2010	5	-
02	cÜv wciUvi m GÜ Kvj vi wj wgtUW	w†m††, 09	14/10/2010	-	-
03	eisj v†`k gb†úvj †ccvi g'vbd†vPvi xs †Kvs wj wgtUW	Rp, 2010	27/12/2010	-	-
04	†mvi x †ccvi GÜ teWw wj m wj wgtUW	201006	11/01/2011	-	-
05	†ccvi c0mwms GÜ c'v†KvRs wj wgtUW	201012	28/06/2011	6	-

w†gU tm±i					
µwgK bs	big	mgvß ermi	ewl R mvavi Y mfv Abp†bi Zwi L	j f'vsk c0†bi kZKiv wmwve	
				bM` j f'vsk	tebvm tkqvi
01	bix q w†gU BÜw†R wj wgtUW	Rp, 2010	30/12/2010	10	-
02	niB†Wj evM†w†gU	201012	13/06/2011	43	-
03	Kbw†W†U w†gU	201012	20/06/2011	25	15% we
04	†gNbv w†gU	201012	22/06/2011	25	-
05	G'vi w†gU w†gU	201012	25/06/2011	-	10% we
06	j vdv†mj gv w†gU wj wgtUW	201012	29/06/2011	-	-
07	cÜv w†gU	201009	02/04/2011	-	-

†Uvix tm±i					
µwgK bs	big	mgvß ermi	ewl R mvavi Y mfv Abp†bi Zwi L	j f'vsk c0†bi kZKiv wmwve	
				bM` j f'vsk	tebvm tkqvi
01	tj MwQ d†U† qvi wj wgtUW	w†m††, 09	16/08/2010	-	10% we

02	Giv. tUvix wj wgtUW	Rp, 10	28/09/2010	25	-
03	G. tj wli mR wj wgtUW	tmPaf 09	28/09/2010	-	-
04	dwb. tj`vi Ktú. wj wgtUW	Rp, 2010	27/12/2010	-	-
05	mgvZv tj`vi Ktú. wj wgtUW	Rp, 2010	28/12/2010	-	-
06	Gtc. GtWj w m dUl qvi wj wgtUW	201012	03/05/2011	40	-
07	evUv my	201012	23/06/2011	105(dvBvj)	-

AvBwU tm±i					
µwgK bs	big	mgvß ermi	ewl R mvavi Y mfV Abpvtbi Zwi L	j f'vsk c0vtbi kZKiv wnmve	
				bM` j f'vsk	tebvm tkqvi
01	tWdwWj KwúDUvi wj wgtUW	Rp, 2010	02/12/2010	-	10% we
02	AwMamtog wj wgtUW	Rp, 2010	05/12/2010	12.5	-
03	wewKkg Ab j vBb wj wgtUW	Rp, 2010	22/12/2010	-	13% we
04	Bbdi tkgb mwfmm tbUl qvK®	201012	28/06/2011	-	10% we
05	BbtUK Abj vBb	201012	30/06/2011	-	10% we

wmi wjK tm±i					
µwgK bs	big	mgvß ermi	ewl R mvavi Y mfV Abpvtbi Zwi L	j f'vsk c0vtbi kZKiv wnmve	
				bM` j f'vsk	tebvm tkqvi
01	DzI qvs wmi wjK m BÜv: wj wgtUW	Rp, 2010	05/12/2010	-	10% we
02	óvUw wmi wjK BÜv: wj wgtUW	Rp, 2010	28/12/2010	25	5% we
03	gbbym wjK BÜv: wj wgtUW	Rp, 2010	29/12/2010	-	20% we
04	tesMj dvBb wmi wjK wj wgtUW	Rp, 2010	30/12/2010	-	-
05	Avi G tK wmi wjK m wj wgtUW	201012	20/03/2011	15	10% we

tUwj Ktgm bKkkm tm±i					
µwgK bs	big	mgvß ermi	ewl R mvavi Y mfV Abpvtbi Zwi L	j f'vsk c0vtbi kZKiv wnmve	
				bM` j f'vsk	tebvm tkqvi
01	Mögy tclv wj wgtUW	201012	19/04/2011	120	-

KtciU eÜ tm±i					
µwgK bs	Big	mgvß ermi	ewl R mvavi Y mfV Abpvtbi Zwi L	j f'vsk c0vtbi kZKiv wnmve	
				bM` j f'vsk	tebvm tkqvi
01	AvBweGj w cÜ	201012	18/05/2011	12.35	-

mwfmm GÜ w qvj Gt÷U tm±i					
µwgK bs	Big	mgvß ermi	ewl R mvavi Y mfV Abpvtbi Zwi L	j f'vsk c0vtbi kZKiv wnmve	
				bM` j f'vsk	tebvm tkqvi
01	mwigU Gj`vtY tcvU wj wgtUW	201012	25/05/2011	20	25% we



02	I tmb Kb tUBbvi wj wgtUW	201012	25/05/2011	-	25% we
----	--------------------------	--------	------------	---	--------

BYtiY tm±i tm±i					
μwgK bs	big	mgvβ ermi	ewl R mvavi Y mfv Abpvtbi Zwi L	j f'vsk c0vtbi kZKiv wnmve	
				bM` j f'vsk	tebvm tkqvi
01	KwUtbUvj BYtiY	201012	28/03/2011	5	7% we
02	c0Bg BYtiY	201012	18/04/2011	-	30% we
03	B0j vU BYtiY	201012	28/04/2011	-	37% we
04	wj j vtqY BYtiY	201012	30/04/2011	-	35% we
05	Gwkqv BYtiY	201012	05/05/2011	-	25% we
06	cvl wqvi BYtiY	201012	30/05/2011	-	25% we
07	wccj m BYtiY	201012	01/06/2011	5	5% we
08	BDbvB tUW BYtiY	201012	02/06/2011	10	10% we
09	M0Y tWj Uv BYtiY	201012	15/06/2011	40	-
10	dwb- BYtiY	201012	15/06/2011	-	25% we
11	b`0 tRbvij BYtiY	201012	20/06/2011	-	12% we
12	%tmUvj BYtiY	201012	20/06/2011	-	15%we
13	cMwZ BYtiY	201012	20/06/2011	15	5% we
14	0 vUwWBYtiY	201012	21/06/2011	-	10% we
15	wi cy wj K BYtiY	201012	21/0/2011	-	10% we
16	wmw tRbvij BYtiY	201012	23/06/2011	-	12%we
17	wUj BYtiY	201012	23/06/2011	-	12.5% we
18	AMbx BYtiY	201012	26/06/2011	-	10% we
19	gvK0BJ BYtiY	201012	27/06/2011	-	12% we
20	XvKv BYtiY	201012	27/06/2011	-	100% we
21	wewRAvBvm	201012	28/06/2011	-	12% we
22	cFwZ BYtiY	201012	29/06/2011	-	12% we
23	Kb0wj BYtiY	201012	29/06/2011	-	20% we

weea tm±i					
μwgK bs	Big	mgvβ ermi	ewl R mvavi Y mfv Abpvtbi Zwi L	j f'vsk c0vtbi kZKiv wnmve	
				bM` j f'vsk	tebvm tkqvi
01	wntbvevsj v BÜw0R wj wgtUW	201012	19/02/2011	10	-
02	erRf tCbUm	201012	09/05/2011	180	-
03	Gi wGU wj wgtUW	201012	25/06/2011	40	-
04	wR wKD ej tcb	201012	28/06/2011	-	20% we
05	tew gtKv wj wgtUW	201012	30/06/2011	-	50% we

2009-10 mtj c0B AwfthvM Gi cieZPKvh0ug mgn wbgiefc:

Zwj Kvfjß tKvúmbi weiæt× AwfthvM:

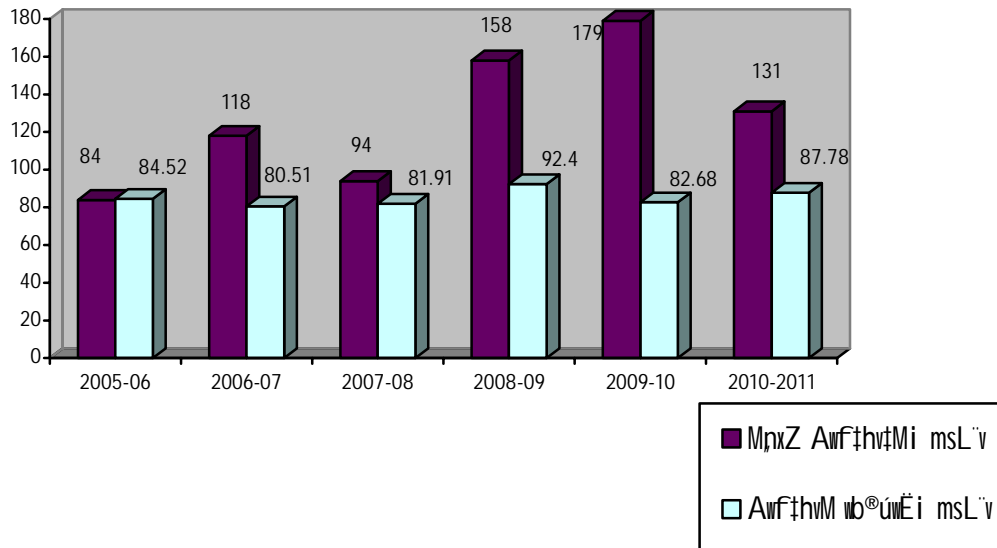
AwfthvMi cKwZ I Ae <sup>-</sup> vb	MpxZ msL <sup>v</sup>	AwfthvMi	côquaxb	AvBbMZ Mh†Yi Gbtdvm†g>U wefv†M tcôY	e <sup>-</sup> v j †† <sup>o</sup>	wggvsmZ
†Nwvl Z j f <sup>v</sup> sk côvb bv Kiv A <sub>-</sub> ev † <sup>o</sup> ix†Z côvb	16		3			13
w†e†v†i i Avmj I my côvb bv Kiv	2		2			
†kqvi U†Ydvi m <sup>o</sup> úwKZ	8		2			6
ivBU Adv†i i c† bv cvl qv	42		1			42
ewvl R côZ†e <sup>-</sup> b bv cvl qv						
wi dvô I qv†i >U msp <sup>v</sup> š†	35		1			34
†kqv†i i w††gU msp <sup>v</sup> š†	4					4
wewa	24		7	1		16
†gvU	131		16	1		115

wemZ K†qK eQ†i AwfthvM wb<sup>o</sup>úw†i nvi

Bmjqvi Gi weiæt× AwfthvM:

A_@Qi	MpxZ AwfthvMi msL <sup>v</sup>	wb <sup>o</sup> úw†i nvi (%)
2005-06	71	87.32
2006-07	103	79.61
2007-08	79	82.28
2008-09	113	92.03
2009-2010	179	82.68
2010-2011	131	87.78

weMZ KtqK A\_@Qti Zwj Kvfy³ tKv¼úmbi weiæt× MpxZ AirfthvM Ges Zv wb®úwËi wPÎ :



Zwj Kvfy³ tKv¼úwmbmgñ KZ℞ tNwl Z j f'vsk Gi weeiYx

2010-11 A\_@Qti 220 wU tKv¼úwmb ewil ℞ mvariY mfv/weþkl mvariY mfv KtiþQ| 96 wU tKv¼úwmb bM` j f'vsk tNvl Yv KtiþQ| tNwl Z j f'vsk Gi wfwl þZ tKv¼úwmbmgñi wefvRb wbþgeæ` qv nþj v:

þKv¼úmbi j f'vsk tNvlYvi nvi	þKv¼úmbi msL'v
10% ev Gi tekx j f'vsk	83
10% Gi Kg j f'vsk	13
tgwU	96



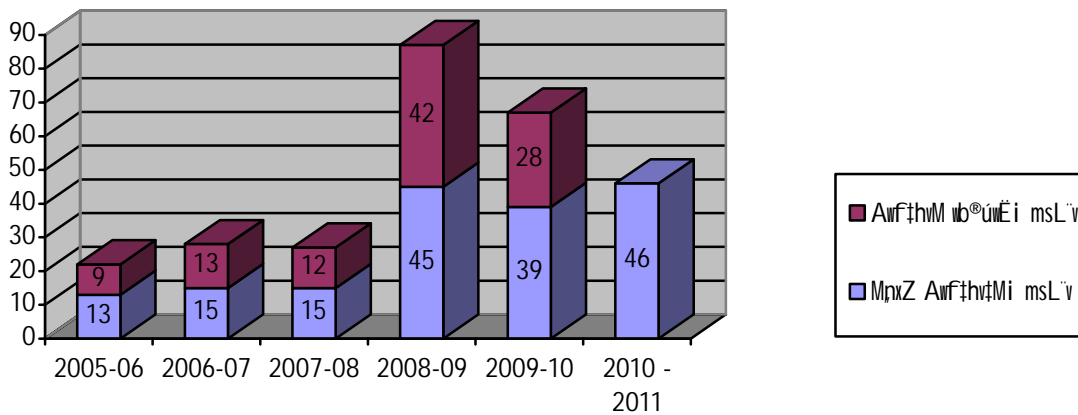
Bmjvqi Ges ÷K teiKvi / ÷K wWj vi /gvfP>U e'vsK Gi wei æt× AwfthvM:

A_@Qi	MpxZ AwfthvMi msL'v	wb®úwÉi nvi (%)
2004-05	105	48.57
2005-06	84	84.52
2006-07	118	80.51
2007-08	94	81.91
2008-09	158	92.40
2009-2010	218	77.23
2010-2011	177	84.18

÷K teiKvi / ÷K wWj vi /gvfP>U e'vsK Gi wei æt× AwfthvM:

A_@Qi	MpxZ AwfthvMi msL'v	wb®úwÉi nvi (%)
2005-06	13	69.23
2006-07	15	86.67
2007-08	15	80.00
2008-09	45	93.33
2009-10	39	71.79
2010-2011	46	73.91

÷K wWj vi / ÷K teiKvi /gvfP>U e'vsK Gi wei æt× MpxZ AwfthvM Ges Zv wb®úwÉi wPÍ -





## 16. AvBb wefvM

Kugkb KZR Ges Kugkbi weiaetx `vtqiKZ gvgj vmgA cwi Pvj bvq Kugkbi ct¶| wbtqWRZ AvBbRxeMYtK mweR mnvqZv c0vb, Kugkbi Ab`vb` wefvM KZR tc0i Z weifbæBmjZ AvBbMZ gZvgZ c0vb Ges Kugkb KZR Avtiwcz Rwi gvbv Av`vtqi Rb` mwUdtkU gvgj v `vtqi | cwi Pvj bv BZ`w` AvBb wefvM mæuv`b Kti \_vtK|

GmBim KZR Ges GmBim0i weiaetx `vtqiKZ tgvU 366wU gvgj v weifbæAv`vj tZ wePvi vaxb itqtQ| gvgj vmg¶ni Av`vj Z wfwEK Ae`vb **cwi wko-14** tZ c0 k0 Kiv ntqtQ|

## 17| g`vtbRtgU Bbdi tgbk wmt ÷ g wefvM (GgAvBGm)

AtUvtgkb tWtfj ctgtUi gva`tg GmBimi weifbæwefvMi Kvhøj x mæuv`tb mæte` mnvqZv t`qv, KæúDUvi vBRW Z` wefk0Y wfwEK c¶RevRvi gubUwis wmt ÷ g Mto tZjv, I tqtei gva`tg mKj tK wmwKDwi wJR AvBb I mswk0 Ab`vb` wltq AeMZ Kiv Ges KugkbK AvajbK Bbdi tgbk tUKtbj wR cæwZ e`envtii gva`tg mgx Kiv GgAvBGm wefvMi gj j ¶| eZgvtb GmBimi mKj KgRZP Zvt`i %bw`b Kvhøj KæúDUvi e`envi Kti \_vtKb| Awdtmi mKj KæúDUvi j`vb Gi AvI Zvf3 | GmBimtZ `ZixKZ BwUtmUw wmwKDwi wJR I G- tPÄ Kugkb AtUvtgtUw wmt ÷ g(SECAS) mdUl qvi Gi weifbægwWDj weifbæwefvMi e`envtii Rb` %Zix Kiv ntqtQ| GmBimi KgRZP Zvt`i I qvK0t ÷ kb t tK mshj3 j`vtbi gva`tg 1 GgæwGm eWe`vU B`Uvitbu tkqviW wfwEK e`envi Kti \_vtKb| GmBim0i I tge mvBtU ([www.secbd.org](http://www.secbd.org)) wmwKDwi wJR AvBb, AvBicI cñtc±vm, Gwij wRej wmwKDwi wJR, wWcwRUix cwUñtcUm, GbtdvmfgU G`vKkbm, ewl R I % gwil K wi tcvU, wbtqvmKvixt`i Rb` Z` BZ`w` weifbæZ` wmwkZ Kiv ntqtQ hv wbgqZ AvctWU Kiv nq Ges I tge mvBUw c¶i e`eüZ ntq \_vtK| Rj vB 2010 - Rb 2011 G wfwRUi msL`v c0q 130,000| Avtj wPZ A`e0ti I tge mvBtU cñtc±vm `vcb Kiv ntqtQ 12wU, GbtdvmfgU A`vKkb `vcb Kiv ntqtQ 147wU, Ab`vb` Av`k/tbwUdtkKkb/WBti wfw BZ`w` `vcb Kiv ntqtQ 50 wU, % gwil K c0Zte`b `vcb Kiv ntqtQ 4wU, ewl R c0Zte`b `vcb Kiv ntqtQ 2wU (evsjv I Bsti Rx), gZvgtZi Rb` c0 weZ Lmov iæj `vcb Kiv ntqtQ 7wU Ges Ab`vb` Zvwj Kv c0B Z` tgvZteK AvctWU Kiv ntqtQ |

wefbæmdUl qvi wmt ÷ gt

mwføj Y gwWDj
wmGdw gwWDj
ti wRt ÷ kb gwWDj
GbtdvmfgU gwWDj
cvi tmvtbj gwWDj
Bmjqvi gwWDj

WkfgU UwKs gwWDj
wi wmcmbtW` gwWDj
i`vbWg BbmfcKkb wmtj Kkb wmt ÷ g
j Uvi x tfwi wdtKkb wmt ÷ g
wWwRUvj tccvi wKwcs wmt ÷ g

GgAvBGm wfvM Dfj øwLZ wmt ÷ gmgfni twtfj ctgU, gwWwdtKkb I tgBtUv`vbtmi KvR Kfi \_vtK|

18. Mtel Yv I Dbqb

Mtel Yv I Dbqb wfvM cRRevRvti mvavi Y weibtdqMKvixt`i Rb` wkflvgj K Kvhpig, mi Kwii I temi Kwii weifbae cÅZovbi AskMhYKvixt`i Rb` cRRevRvi welfqK tmigbtii AvtdqRb, Kugktbi cKvkbv mgra wbcugZ cKvKkiY Ges e`vsK I Aw\_R cÅZovb wfvM, A\_`gšYvj qmn weifbaeKZetfi wBKU Z`w`/DcvE tcoY BZ`w` KgRvU m`uv` b Kfi \_vtK|

2010-11 A\_`eQti Kugktbi Mtel Yv I Dbqb wfvM wbaewYZ Kvhpj x m`uv` b Kfi tQ:

cÅZte` b cKvkbv:

ewil R cÅZte` b (evsj v I Bsti Rx)	t	2009- 2010
%b gvimK cÅZte` b (4wU)	t	Rp 2010- gvP©2011
GmBim cwi μgv (evsj v wDRtj Uvi) (4wU)	t	Rp 2010- gvP©2011

wkflvgj K Kvhpig:

mvavi Y weibtdqMKvixt`i cRRevRvi welfq avibv t`qvi wbcgE 2010-2011 A\_`eQti wmwKDwi wJR I G. tPA Kugkb cÅZ gvtm` wU Kfi (`B w be`vcx) cÅkflY KgmpX Kugkb Kvhpj tQ tkqvi evRvti weibtdqMKvixt`i Rb` wkflvgj K Kvhpjgi Ask wmvte AvtdqRb Ae`vnZ ti tLtQ| D³ Kvhpjtg 705 Rb mvavi Y weibtdqMKvixt`i AskMhY Kfi tQb hvtZ Kugktbi D×Zb KgRZte` cRRevRvi msukó AvBb-Kvbp, iæj m/ti ,tj kb, cÅBgwi I tmtKÜwvi gvtkflU weibtdqM, mvtfBj`vY wmt ÷ g, wWcwRUwi wmt ÷ g, tkqvi tnvì vi t`i Awakvi BZ`w` welfq e³e` cÅvb Kfi b|

evRvi ga`ZvKvixt`i cRRevRvi m`utK`Avb`vb Ges tckvMZ`flZv ewx i j tfl` Avtj vP` mgtq Kugkb XvKv I PÆMög ÷K G. tPtAi m`m`ti`i Abtgvw`Z cÅZwbia`i Rb` XvKv I PÆMög ÷K G. tPtA cÅkflY KgmpX AvtdqRb Kfi tQ| D³ Kvhpjtg XvKv I PÆMög ÷K G. tPtAi m`m`ti`i tgvU 1086 Rb Abtgvw`Z cÅZwbia AskMhY Kfi tQb| ZvQvon weibtdqMKvixt`i weibtdqM m`utK`avibv t`qvi Dfi tk` cRRevRvti weibtdqM kxl R



GKIU eKtj U cVqb Kiv ntqtQ |

cv`uJKv: wDR tj Uvi, eKtj U A\_9efvM tc0Y wv0Z Kiv nte |

### 19. evsj v`k BYUUDU Ae K`wUvj gvK0

GmBum Gi tbZtZ; msuk0 cTmgni Ask M0tbi gva`tg evsj v`k BYUUDU Ae K`wUvj gvK0 bvtg cRevRvti i Rb` GKIU wtklwgZ c0kTj BYUUDU 25 tg 2008 Zwi tL 1994 mvj i tKv0ub AvBtbi 28 avivi Aaxtb embR` gsbvj tqi jvBtmY c0B ntqtQ Ges GKvWwgK Kvh0g i i0mn mvgwM0 cwi Pvj bvi Rb` mi Kvi 2010-2011 A\_0ti evRtU cP tKwU UvKv eivl` Kti tQ | Avtj wPZ A\_0ti BYUUDtUi Rb` c0vb wbevix wbtqM c0B nhtQb Ges Gi Kvh0g i i0mi Rb` c0qvRbxq tfsZ mjeawi` i AvKvsk ev`0vqZ ntqtQ | Rbej wbtqM mpmvsl` wclqU c0muqaxb AvtQ0 Rbej wbtqvtMi ci wAvBumGg Gi cYv0 Kvh0g i i0mi Kiv nte | cRevRvi m0utK0 T | AvfA Rbej m00 Kiv G c0Z0vtbi gj j T |

### 20. fivel`r cwi Kiv

evsj v`tki cRevRvi GKIU `0Z ea0kxj cRevRvi | G evRvti e`w0 I c0vZ0vbK w0btqMKvixi msl`v Ges w0btqvtMi cwi gvY `0Z epx cvt`Q | tmB mv\_ mi Kwi, temi Kwi I e0RwZK jvFRbK tKv0ubmgni tkqvi cRevRvti Avbqbtbi gva`tg wmwKDwiUtRi thvMvb epx i wbjm c0P0v Ae`vnZ itqtQ | Kvgkb cRevRvti w0btqMKvixt`i wKl w0btqvtMi mthvM m00i gva`tg cRevRvti Mfxi Zv evovtbi e`vcvti ÷K G. tPA I evRvi ga`ZvKvix c0Z0vb mgni mnthvMZvq tWwi tFwJfmn bZb bZb BYUtgU Bmji Rb` KvR Kivi cvkvcwk tgSj wfwE m0ub0jvFRbK tKv0ub mgntK AvK0 Kivi Rb` BwZgta`B eK wwi s cxwZ c0Z0 Kti tQ | cRevRvti `wbK tj bt`tbi cwi gvY Dtj 0LthvM`fvte epx cvl qvq Zvi mv\_ mvgAm` i vLtz tmsUj wWcwRUwi evsj v`k wj wgtUW (wmmw0Gj) Gi wWcwRUwi wt ÷g Gi mvf0 Ges t0vtiR wt ÷gm mn Ab`vb` Avby w0K hšcWZ mgr D`P aviY TjgZvq ifcvsl`i Kiti Yi h\_vh\_ e`e`v M0tYi wclq BtZvgta` Kvgkb wWcwRUwi tK c0qvRbxq w`K wbt`Rbv c0vb Kti tQ Ges Zv ev`0vqZ ntqtQ | cRevRvti epx i mv\_ mv\_ w0btqMKvixt`i msuk0 wclq mwK AvbR0bi wclqU AvZ `iaZcY0 tm j T | cRevRvti i Rb` wtklwgZ GKIU c0kTj BYUUDU 0evsj v`k BYUUDU Ae K`wUvj gvK0 BwZgta`B c0Z0vZ ntqtQ | ZvQvov w00w0 wclqmgni ev`0vqbtbi e`vcvti Kvgkb KvR Kiti :

- mi Kwi, temi Kwi I e0RwZK jvFRbK tKv0ubmgni tkqvi cRevRvti Avbqbtbi cP0v Ae`vnZ i vLv hvZ cRevRvti wmwKDwiUtRi thvMvb epx cvq |
- Bmjqvi tKv0ubmn evRvi ga`ZvKvix c0Z0vb mgni c0vZ0vbK m0vmtbi DbwZi j T | KvR Kiv |



2010-2011 A<sub>3</sub> eQti i vR<sup>-^</sup>I gj ab LvZ e<sup>o</sup>q ntqtQ 9.745 tKwU UvKv | weMZ 2009-2010 A<sub>3</sub> eQti D<sup>3</sup> LvZ e<sup>o</sup>qti cwi gvb uQj 6.697 tKwU UvKv (cwi ukó-15 I 16) |

## 22. cwi wkómgn

cwi wkó-1

XvKv ÷ K G. tPĀi tj bĀ ĩbi Zj bvgj K weei Yx

wbĀ ĀK (Zwj KvĀĀ)	Rp 30,2011	Rp 30,2010	%cwi eZĀ
†Kv=úwbi msLĀv	232	243	(4.74)
wgDPĀqj dvĀŪi msLĀv	35	26	34.61
wĀteĀvĀi i msLĀv	8	8	0.00
†URvi x eĀŪi msLĀv	212	171	23.97
KĀcĀi U eĀŪi msLĀv	3	2	50.00
wmĀKDwi ūĀĀRi msLĀv	490	450	8.88
†KwĀ			
†Kv=úwb mgĀni tkqvi msLĀv	1732.1	650.87	166.12
wgDPĀqj dvĀŪi mwĀĀĀĀĀKU msLĀv	276.2	122.52	125.43
wĀteĀvĀi i msLĀv	.041	0.04	2.5
†URvi x eĀŪi msLĀv	.50	0.39	28.20
KĀcĀi U eĀŪi msLĀv	.707	0.43	64.41
tj bĀ bĀhvMĀ wmĀKDwi ūĀĀRi msLĀv	2009.6	773.84	159.69
†KwĀ ūvKv			
ewĀ Ā tj bĀ bKZ wmĀKDwi ūĀĀRi msLĀv	283	276	2.54
ewĀ Ā tj bĀ bi cwi gvY	325,915.26	256,349.86	27.14
BmĀKZ †URvi x eŪ	50,111.30	39,401.30	27.19
KĀcĀi U eĀŪi BmĀKZ gj ab	706.90	433.60	63.03
wmĀKDwi ūĀĀRi tgvŪ BmĀKZ gj ab	80,683.90	60,726.30	32.86
tgvŪ evRvi gj ab	285,389.22	270074.46	5.67
wmĀKDwi ūĀĀRi gjĀ mPK	5093.19 (mKj tkqvi Gi gjĀ mPK)	5,111.63 (mKj tkqvi Gi gjĀ mPK)	102.75

30 Rþ 2011 Zwi þL XvKv I PÆMög ÷K G· þPÄ Zwiþ Kvff<sup>3</sup> þKv<sup>æ</sup>cwb I wmwKDwi wUR Gi msL<sup>v</sup>, BmjKZ gj ab, evRvi gj ab, wmwKDwi wUR Gi tj b<sup>þ</sup> þbi cwi gy Ges tkqvi gj<sup>''</sup> mPK w<sup>þ</sup>g<sup>æ</sup> I qv nj |

evsj v<sup>þ</sup> þki c<sup>þ</sup>RevRvi  
Rþ 30, 2011

w <sup>þ</sup> þ RK (Zwiþ Kvff <sup>3</sup> )	XvKv ÷K G· þPÄ	PÆMög ÷K G· þPÄ
þKv <sup>æ</sup> úwbi msL <sup>v</sup>	232	200
wgDP <sup>þ</sup> qj dvt <sup>Ü</sup> i msL <sup>v</sup>	35	35
w <sup>þ</sup> teÁvt <sup>i</sup> msL <sup>v</sup>	8	3
þURvix e <sup>þ</sup> Üi msL <sup>v</sup>	212	--
K <sup>þ</sup> c <sup>þ</sup> iU e <sup>þ</sup> Üi msL <sup>v</sup>	3	--
wmwKDwi w <sup>þ</sup> Ri msL <sup>v</sup>	490	238
		þKwJ
þKv <sup>æ</sup> úwb mg <sup>þ</sup> ni tkqvi msL <sup>v</sup>	1732.1	1668.45
wgDP <sup>þ</sup> qj dvt <sup>Ü</sup> i wmw <sup>þ</sup> þKU msL <sup>v</sup>	276.2	276.24
w <sup>þ</sup> teÁvt <sup>i</sup> msL <sup>v</sup>	.004	0.70
þURvix e <sup>þ</sup> Üi msL <sup>v</sup>	0.50	--
K <sup>þ</sup> c <sup>þ</sup> iU e <sup>þ</sup> Üi msL <sup>v</sup>	0.70	--
þgvU tj b <sup>þ</sup> þ <sup>þ</sup> hM <sup>i</sup> wmwKDwi w <sup>þ</sup> Ri msL <sup>v</sup>	2009.6	1945.40
		þKwJ UvKv
þKv <sup>æ</sup> úwb mg <sup>þ</sup> ni BmjKZ gj ab (tkqvi)	27279.79	27012.94
wgDP <sup>þ</sup> qj dvt <sup>Ü</sup> i BmjKZ gj ab	2571.91	2571.91
BmjKZ w <sup>þ</sup> teÁvi	14.00	706.86
wmwKDwi w <sup>þ</sup> Ri þgvU BmjKZ gj ab	80683.90	30291.73
evRvi gj ab	285389.22	223758.50
tkqvi Gi gj <sup>''</sup> mPK	5093.19 (mKj tkqvi Gi gj <sup>''</sup> mPK)	17059.53 (mKj tkqvi Gi gj <sup>''</sup> mPK)

PÆMög ÷ K G· tPtAi tj bt` tbi Zj bvgj K weei Yx

wbt` RK (Zwij Kvfb)	Rp 30,2010	Rp 30,2011	%cwieZ
tKv=úmbi msL`v	204	200	-1.96
wgDPzqvj dvtÚi msL`v	26	35	34.61
wWteÁvti i msL`v	2	3	50
wmwKDwi uJtRi msL`v	232	238	2.58
	tKwU	tKwU	
tKv=úmb mgfni tkqvi msL`v	673.05	1668.45	147.89
wgDPzqvj dvtÚi mwUdtkU msL`v	122.52	276.25	125.47
wWteÁvti i msL`v	0.43	.70	62.79
tj bt` bthvM` wmwKDwi uJtRi msL`v	796.016	1945.4	144.39
	tKwU	tKwU	
ewil R tj bt` bKZ wmwKDwi uJtRi msL`v	232	238	2.58
ewil R tj bt` bi cwi gvY	21520.36	32168.23	49.47
Zwij Kvfb wmwKDwi uJtRi BmjKZ gj ab	20111.56	30291.73	50.61
tgvU evRvi gj ab	253439.33	223758.50	-11.71
mKj wmwKDwi uJtRi gj` mPK	(mKj tkqvi Gi gj` mPK) 18116.0516	(mKj tkqvi Gi gj` mPK) 17059.5302	-5.83

XvKv ÷ K G. tPtAi Kvhpug  
Rj vB 2010 - Rp 2011

mgq	gj mPK (mKj tkqvi gj mPK)	wmkDii uJR tj b` b (tKwU msL`v)		tgvU tj b` b (tKwU UvKv)		evRvi gj ab	
		gwmK	vbK Mo	gwmK	vbK Mo	tKwU UvKv	AvtMi gvvtmi mvf_ cwieZfbivni (%)
Rj vB 2010	5,278.89	1,163.22	61.22	322,769.28	16,987.86	2,821,701.76	4.48
AvMó	5,555.49	1,793.43	81.52	394,438.07	17,929.00	2,984,511.69	5.77
tmtPaf	5,930.90	1,602.83	89.05	312,562.35	17,364.58	3,113,233.18	4.31
Atavei	6,612.14	2,265.35	113.27	468,008.97	23,400.45	3,370,998.75	8.28
btfaf	7,135.16	2,233.33	117.54	471,717.20	24,827.22	3,598,329.89	6.74
wvtmaf	6,877.66	2,275.47	108.36	387,174.09	18,436.86	3,508,005.80	(2.51)
Rvbqwi 2011	6,198.82	1,442.65	72.13	186,969.24	9,348.46	3,267,387.07	(6.86)
tdeaqwi	4,317.89	1,020.38	60.02	114,887.12	6,758.07	2,413,072.93	(26.15)
gvP	5,275.13	1,967.89	89.45	217,125.14	9,869.32	2,855,302.28	18.33
Gvcj	5,032.95	1,375.91	72.42	156,284.38	8,225.49	2,772,190.23	(2.91)
tg	4,798.37	1,035.36	49.30	92,566.24	4,407.92	2,688,098.87	(3.03)
Rp 2011	5,093.19	1,519.33	69.06	134,650.48	6,120.48	2,853,892.24	6.17
tgvU 2010-2011		19,695.16	82.06	3,259,152.58	13,579.80		

PAEMóg ÷ K G. tPtAi Kvhpug  
Rj vB 2010 - Rp 2011

mgq	gj " mPK (mKj tkqvi gj " mPK)	vniKDni vUR tj b` b ( tKwU mSLv)		tgvU tj b` b (tKwU UvKv)		evRvi gj ab	
		gwmK	``wbK Mo	gwmK	``wbK Mo	tKwU UvKv	AvtMi gvftmi mvt_ cwi eZftbi nvi (%)
Rj vB 02010	18886.3032	15.40	.81	2432.94	128.04	234413.06	4.56
AvMó	19770.8567	20.81	.95	2976.66	135.03	249564.49	6.46
tmtPst	20729.7935	19.24	1.069	2770.36	153.91	262133.01	5.03
At±vei	22672.8758	27.39	1.36	4252.48	212.62	286636.68	9.34
btFst	24232.8899	27.87	1.46	4587.23	241.43	307566.59	7.30
vWtmst	23448.9884	29.51	1.40	4116.94	196.04	298393.44	-2.98
Rvbyvni 2011	21424.5875	17.70	.86	2173.31	108.66	273272.34	-8.41
tde°qwi	14684.1275	15.33	.95	1414.17	88.39	189884.65	-30.51
gvP°	17758.6700	28.80	1.8	2502.07	113.73	229442.98	20.83
Gvcj	16941.1535	21.69	.98	1690.58	88.98	219448.07	-4.35
tq	16028.1582	19.22	1.01	1306.50	62.21	210050.34	-4.28
Rp 2011	17059.5302	26.94	1.17	1944.87	84.85	223758.50	6.52
tgvU 2010- 2011		269.39	1.12	32168.23	134.03		

evRvi gj ab gvftmi tkI Kvhp etmi /

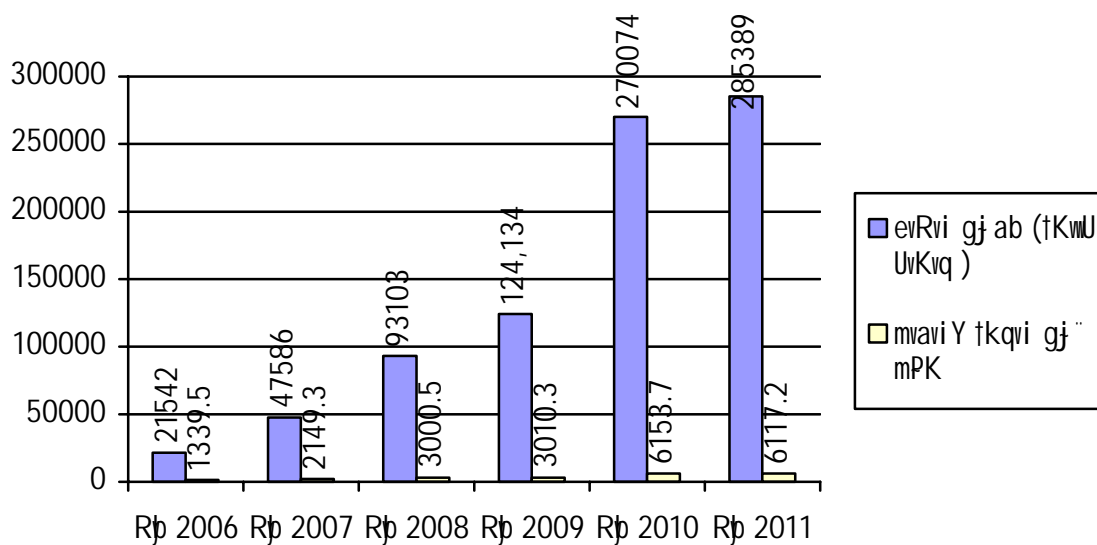


XvKv ÷ K G. ოქტომბერი 2011 წლის ბიუჯეტის კვლევა  
 Rj vB 2005 - Rb 2011

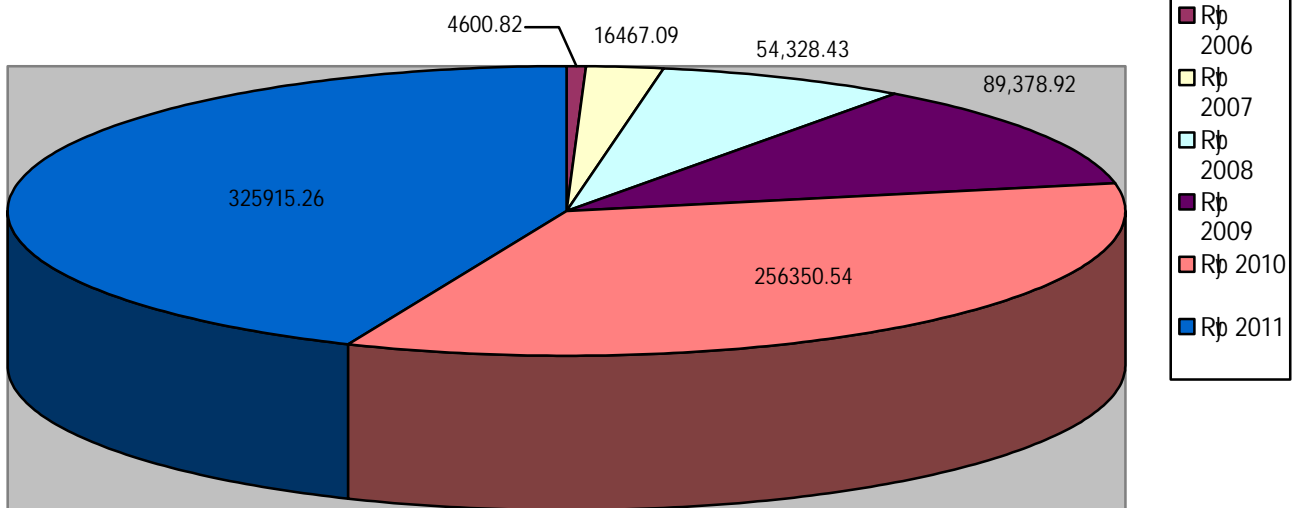
mgq	mvavi Y tkqvi gj mPK	მიწის ფართობი (ტკმ <sup>2</sup> )	ბიუჯეტის		გადახდა	
			ტკმ <sup>2</sup> UvKv	AvMi eQti i mvt_ cwi eZebi nvi (%)	ტკმ <sup>2</sup> UvKv	AvMi eQti i mvt_ cwi eZebi nvi (%)
Rj vB 2005-Rb 2006	1339.52	55.78	4600.82	(29.43)	21,542.18	(2.98)
Rj vB 2006-Rb 2007	2149.32	198.31	16,467.09	258.03	47,585.53	120.89
Rj vB 2007 -Rb 2008	3000.50	376.11	54,328.43	229.92	93,102.52	95.65
Rj vB 2008 -Rb 2009	3010.26	575.79	89,378.92	64.51	124,133.89	33.33
Rj vB 2009 -Rb 2010	6153.68	1013.34	256,350.54	186.81	2,70,074.46	117.56
Rj vB 2010 -Rb 2011	6117.23	1969.52	325915.26	27.14	285389.22	5.67

გადახდა I კვარტალი 2011 წლის ბიუჯეტის

Rb 2006 - Rb 2011 მთლიანად გადახდა გასული კვარტალი 2011 წლის ბიუჯეტის

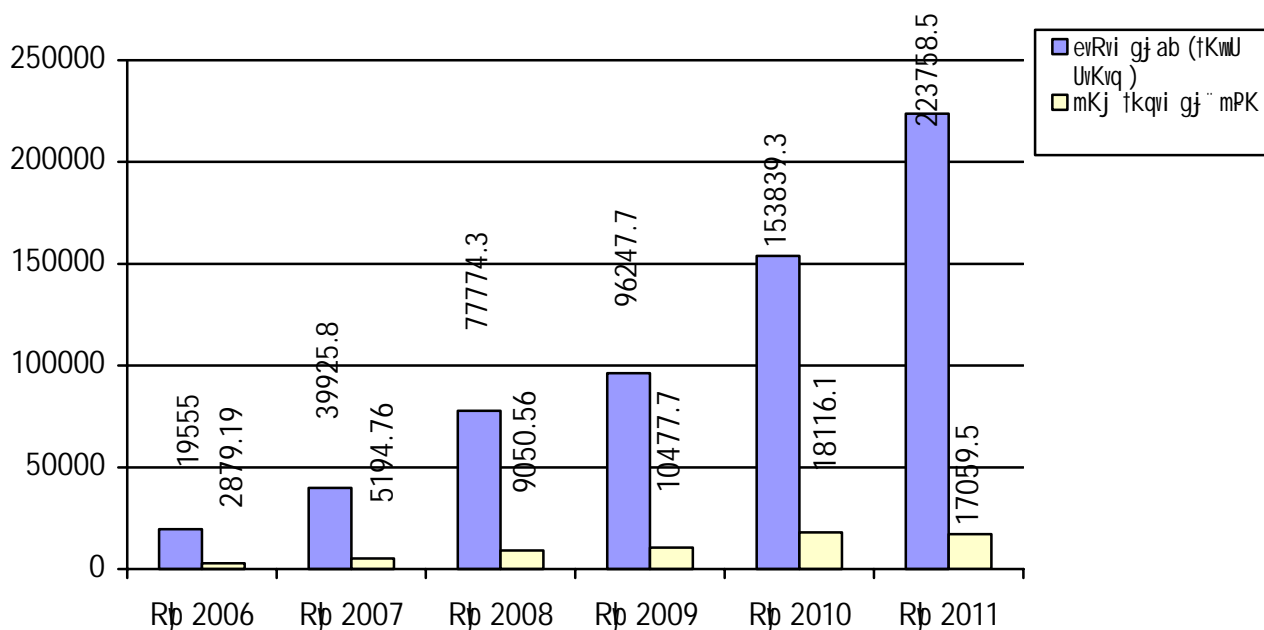


weMZ cuP eQti wWGmB0i wmwKDwi wJR tj bti b Gi cwi gvY (tKwU UvKvq)

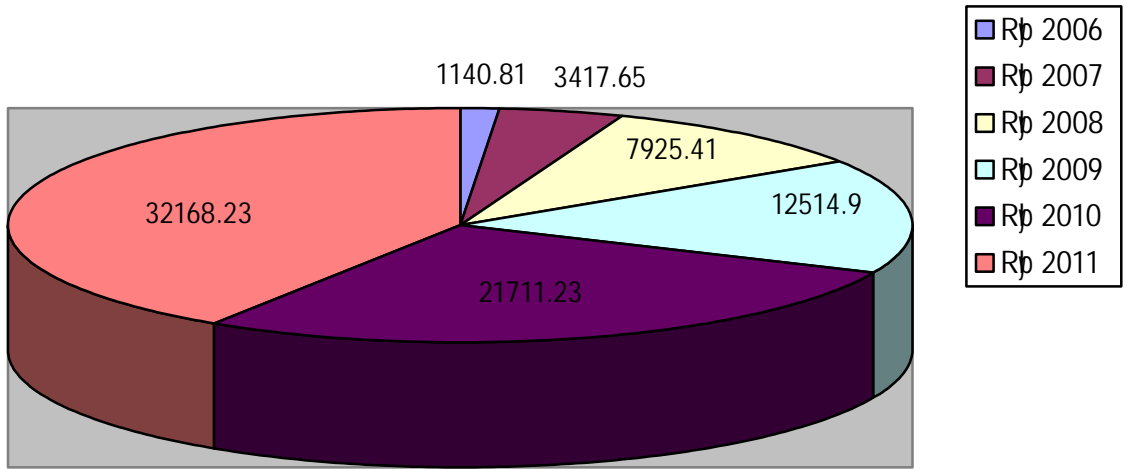


PÆMÛg ÷ K G. †P†Ái weMZ cuP eQ†i i tj b†` b Kvhpug  
Rj vB 2005 - Rp 2011

mgq	mKj tkqvi gj` mPK	wmkDwi uJR tj b†` b (†KwU msL`v)	†gvU tj b†` b		evRvi gj ab	
			†KwU UvKv	Av†Mi eQ†i i mv† cwi eZ†bi nvi (%)	†KwU UvKv	Av†Mi eQ†i i mv† cwi eZ†bi nvi (%)
Rj vB 2005-Rp 2006	2879.19	24.9	1,140.81	(32.04)	19,555.00	(3.69)
Rj vB 2006-Rp 2007	5194.7658	58.55	3,417.65	199.58	39,925.80	104.17
Rj vB 2007-Rp 2008	9050.5632	74.89	7,925.41	131.90	77,774.30	94.80
Rj vB 2008-Rp 2009	10477.67	118.20	12514.90	57.90	96,247.70	23.75
Rj vB 2009-Rp 2010	18116.05	139.52	21711.23	73.48	153839.33	163.32
Rj vB 2010-Rp 2011	17059.5302	269.39	32168.23	48.16	223758.50	45.44



weMZ cuP eQ†i vmGmB0i wmkDwi uJR tj b†` †bi cwi gvY (†KwU UvKvq)



μwgK bs	‡Kvꝑúvbxí bvg
01	Avj -Awgb K'wg‡Kj BÚwóR wj t
02	Avj dV tUve'v‡Kv g'vbp'd'vKPwi s ‡Kvs wj t
03	Avvgv wv dW BÚwóR wj t
04	G‡c· DBwfs G'vÚ wclwkwks wgvj m wj t
05	Avi we tU· UvBj wgvj m wj t
06	Avki vd tU· UvBj wgvj m wj t
07	AvRv`x wclUvm'wv t
08	evsj v tcl'tmm BÚwóR wj t
09	evsj v‡`k K'wgK'vj BÚwóR wj t
10	evsj v‡`k WvBwqs G'vÚ wclwkwks BÚwóR wj t
11	evsj v‡`k B‡j KuUtmwU wvUvi ‡Kvs wj t
12	evsj v‡`k ‡nv‡Uj m wj t
13	evsj v‡`k wj d tUve'v‡Kv ‡Kvs wj t
14	evsj v‡`k j v‡MR BÚwóR wj t
15	evsj v‡`k cø'vU'vkb wj t
16	evsj v‡`k wRcvi BÚwóR wj t
17	wvW gb‡`vuj tccvi g'vbp'd'vKPwi s wj t
18	‡e½j we`U wj t
19	‡e½j dvBb wmi wvGKm wj t
20	ev‡qwbK wv dW G· ‡cvU'wv t
21	wPK tU· wj t
22	WwU Wwqs wj t
23	XvKv wclwvi R wj t
24	WwqbwgR tU· UvBj BÚwóR wj t
25	CMj ÷vi tU· UvBj wgvj m wj t
26	G‡· j wvqi mR wj t
27	MwP nvUv G'vKqvKvj Pvi dvg'wv wj t
28	Rvg'wv evsj v ‡R w' dW wj t
29	Mvj d dWm wj t
30	wvj cø'v‡Ukb wj t
31	wvgw`² wj t
32	‡j· ‡Kv wj t
33	Gg tnv‡mb Mv‡g'wv I qwks G'vÚ WvBwqs wj t
34	g'vK G'vUvi c'BR wj t
35	g'vK tccvi BÚwóR wj t
36	‡gNbv wcl'yc Kvj Pvi wj t
37	‡gUv‡j· K‡c'wv i kb wj t
38	wvZv tU· UvBj m wj t
39	gWvY'wv‡g'U wj t
40	gWvY'wvBÚwóR wj t
41	‡gvbv dW tcl'wv±m wj t

42	gbvfdwe <sup>a</sup> wj t
43	wbj q wntg>U BŪv.wj t
44	cŪv wntg>U wj t
45	cŪv wccŪvi m GŪ Kvj vi m wj t
46	fccvi tccŪmms G'vŪ c'vfkwrS wj t
47	Cvi wcdDg K'wgK'vj BŪwōR wj t
48	tcŪŪŪ wmbŪ_wJKm tccŪw±m wj t
49	dvgrKv B>Ūvi b'vkbvj wj t
50	dwb· t j`vi Kgtcø· wj t
51	Kvfkjg wmé wjj m wj t
52	Kvfkjg tŪ· UvBj wjj m wj t
53	i ngvb K'wgK'vj m wj t
54	i vŷvgwŪ dW tccŪw±m wj t
55	i vmicŪ WwŪv g'vŷbRt>Ū G'vŪ tŪwjj KwgDwbŷKkb wj t
56	i vmicŪ AvBGBwm. weW wj t
57	ŷivR tntfb ej tcb wj t
58	mŷRe wŪU I q'vi G'vŪ MvtgŪm wj t
59	mŷj n KvfcŪ wjj m wj t
60	ŷmrvbj x fccvi G'vŪ tevW <sup>q</sup> wjj m wj t
61	kŪ c j tŪ· UvBj wjj m wj t
62	ZwgRwŷl b tŪ· UvBj wjj m wj t
63	w` Bwŷwbcqvi m wj t
64	ŷ_i wcdwJKm (evsj vŷ` k) wj t
65	wŪDwj c tWBwi G'vŪ dW tccŪw±m wj t
66	I qvŪv K'wgK'vj m wj t
67	I qvŪvi j ŷŪ Uqm wj t
68	BDmŷd dŷl qvi wjj m wj t

# cwi wkó mgn

## cwi wkó-9

Rj vB 2010-Rp 2011 Bs chS-mgqKvjt i Kvgkb KZK cñtc±m cKvtki Abfgv` Z tKv=úvxi weei Yrt

μ: bs	tKv=úvxi big	Bmij g vtbRvti i big	Abfgv` tbi Zwi L	cñZ tkqvti i AvrfmZ gj`	tgvU gj ab (UvKv) (9+13)	`úYi BKZvqU (vcñgqvg Orov, UvKvq)			cveij K BKZvqU (vcñgqvg Orov, UvKvq)			tgvU (10+11+12)	gšb`
						`vbxq	vef` kv	tgvU	mivai Y RbNY	vef` kv tcm tgvU	`vbxq tcm tgvU		
1	2	3	4	5	6	7	8	9	10	11	12	13	14
1.	AvKvUf dñBb K vgtKj vj t	RbZr e vsk vj t	15/7/10	10/-	40.00 tKvU	24.00 tKvU	-	24.00 tKvU	16.00 tKvU	-	-	16.00 tKvU	mggtj` (`vqx c×vZi Avl Zvq)
2.	Gj` vqY tñmi sm vj vgtUW	Gj` vqY vdb` wYqj mwf`mm vj t	8/9/10	10/-	-	100.00 tKvU	-	100.00 tKvU	-	-	-	-	eK veii s c×vZi Avl Zvq 3.50 tKvU tkqvi cñZvUj BbWtKvUf gj` 88.00 UvKv mmmte tgvU 308.00 tKvU UvKv Rb` cñZvmbK veibiqmKvix (Institutional Investors) t`K veii s i iæi Abfgv` b cñvb Kiv nqj` vKS` gnvgrb` Av` vj Z KZK `mZv` k (Stay Order) Gi` iæb veii s i iæ nqj` cieZvZ 20/1/11 Bs Zwi tL Kvgkb tñvUctKkvti gva`tg eK veii s c×vZ mmtcU KñtQ (eK veii s c×vZi Avl Zvq)
3.	Gg. AvB. vmtgvU tciæi vj vgtUW	Gj` vqY vdb` wYqj mwf`mm vj t	7/12/10	10/-	100.00 tKvU	70.00 tKvU	-	70.00 tKvU	30.00 tKvU	-	-	30.00 tKvU	Bmij gj` 111.60 UvKv cñZ tkqvi (eK veii s c×vZi Avl Zvq)
4.	t` keUz cqv gri vj vgtUW	BDvqvb K`vcUvj vj t	8/9/10	10/-	40.00 tKvU	24.00 tKvU	-	24.00 tKvU	16.00 tKvU	-	-	16.00 tKvU	mggtj` (`vqx c×vZi Avl Zvq)
5.	GgtRGj eivj v` k vj t	cñBg vdb` vY GU BbtfótgvU vj t	5/12/10	10/-	180.32 tKvU	140.32 tKvU	-	140.32 tKvU	40.00 tKvU	-	-	40.00 tKvU	(eK veii s c×vZi Avl Zvq) Bmij gj` 152.40 UvKv cñZ tkqvi   Kvgkb 13/6/11 Bs Zwi tL cñT i gva`tg tKv=úvxi K BZvgtv` cñB memmucvkb A` t`K cñvgK eivj` cñBMYtK 37.40 UvKv mmmte tci r cñvbi vbt` Rbv cñvb KñtQ
6.	mij tfv K`vgtKj BÚmó vj vgtUW	GGG Kbmvj tñvUm GU vdb` wYqj mwf`mm vj t	7/12/10	10/-	40.10001 tKvU	14.10001 tKvU	-	14.10001 tKvU	26.00 tKvU	-	-	26.00 tKvU	mggtj` (`vqx c×vZi Avl Zvq)
7.	ei KvZj vn Btj vKtU WqbwgK m vj vgtUW	cñBg vdb` vY GU BbtfótgvU vj t	1/02/11	10/-	86.00 tKvU	66.00 tKvU	-	66.00 tKvU	20.00 tKvU	-	-	20.00 tKvU	vcñgqvg Bmij gj` 60.00 UvKv cñZ tkqvi (vqx c×vZi Avl Zvq)
8.	BDvbk tñvUj GU m tñvU vj vgtUW	eK BrcGj BbtfótgvU vj vgtUW	13/1/11	10/-	-	230.00 tKvU	-	230.00 tKvU	-	-	-	-	eK veii s c×vZi Avl Zvq 3.00 tKvU tkqvi cñZvUj BbWtKvUf gj` 185.00 UvKv mmmte tgvU 555.00 tKvU UvKv Rb` cñZvmbK veibiqmKvix (Institutional Investors) t`K veii s i iæi Abfgv` b cñvb Kiv nqj` cieZvZ 20/1/11 Bs Zwi tL Kvgkb tñvUctKkvti gva`tg eK veii s c×vZ mmtcU KñtQ (eK veii s c×vZi Avl Zvq)

μgK bs	÷ K teřKvi /wWj vři i bvg l wWkvbv	mbř l aiY	m`m` bs	wbeÜb mb` bs l Bmjı Zwi L
1	G½i wmwKDwi wJR wj t Křl # 712, wWGmB wewi s, 9/B, gwZwSj ev/G, XvKv-1000	÷ K teřKvi	wWGmB #177	ři wRt-3.1/ wWGmB 177/2010/416 Zwi L: 14.07.2010
2	Gwkqv wmwKDwi wJR wj t Gm Gm ÷xj wewi s , tj řřj # 6,m`BU # 602,17/wm cvřc_ XvKv-1217	÷ K wWj vi   ÷ K teřKvi	wWGmB #88	ři wRt-3.1/ wWGmB -88/2010/418 Zwi L: 18.07.2010   ři wRt-3.1/ wWGmB -88/2010/417 Zwi L: 18.07.2010
3	kvnbvR wmwKDwi wJR Křl # 712, wWGmB wewi s, 9/B, gwZwSj ev/G, XvKv-1000	÷ K wWj vi   ÷ K teřKvi	wWGmB # 46	ři wRt-3.1/ wWGmB -46/2010/422 Zwi L: 17.08.2010   ři wRt-3.1/ wWGmB -46/2010/421 Zwi L: 17.08.2010
4	Gue wmwKDwi wJR wj wgtUW we wm Av wm Feb , 30-31 w`j Kkv ev/G, XvKv-1000	÷ K teřKvi   ÷ K wWj vi	wWGmB #201	ři wRt-3.1/ wWGmB -201/2010/419 Zwi L: 01.08.2010   ři wRt-3.1/ wWGmB -201/2010/420 Zwi L: 01.08.2010
5	Gg wU we wmwKDwi wJR wj wgtUW 14-15 gwZwSj ev/G, XvKv-1000	÷ K teřKvi   ÷ K wWj vi	wWGmB # 197	ři wRt-3.1/ wWGmB -197/2010/427 Zwi L: 16.09.2010   ři wRt-3.1/ wWGmB -197/2010/428 Zwi L: 16.09.2010
6	cÜBg e`sK wmwKDwi wJR wj t wccj m BÝři Ý Feb , 36 w`j Kkv ev/G, XvKv-1000	÷ K teřKvi   ÷ K wWj vi	wWGmB # 129	ři wRt-3.1/ wWGmB -129/2010/429 Zwi L: 16.09..2010   ři wRt-3.1/ wWGmB -129/2010/430 Zwi L: 16.09..2010
7	mwř K dvBb`vÝ g`vřbRřřU wj t Křl bs 211, wWGmB wewi s 9/Gd, gwZwSj ev/G, XvKv-1000	÷ K teřKvi   ÷ K wWj vi	wWGmB # 28	ři wRt-3.1/ wWGmB -28/2010/423 Zwi L: 08.09.2010   ři wRt-3.1/ wWGmB -28/2010/424 Zwi L: 08.09.2010
8	Bmj vgx e`vSk wmwKDwi wJR wj t 63 w`j Kkv ewYwR`K Gj vKv XvKv-1000	÷ K teřKvi	wWGmB # 107	ři wRt-3.1/ wWGmB-107/2010/432 Zwi L: 06.10.2010



μgK bs	÷ K teŕKvi /wVj vti i bvg l wKvov	mbt` l aiY	m`m` bs	wbeÜb mb` bs l Bmji Zwi L
9	dv÷K`wvUvj wmwKDwi wJR wj t K¶  bs 211, XvKv ÷K G· tPÄ weñ s, 9/Gd gwZwSj ev/G XvKv-1000	÷ K teŕKvi	wVGmB # 70	ti wRt-3.1/ wVGmB-70/2010/437 Zwi L: 02.11.2010
10	G`vsKi wmwKDwi wJR wj wgtUW K¶  bs 712, XvKv ÷K G· tPÄ weñ s, 9/Gd gwZwSj ev/G, XvK	÷ K teŕKvi	wVGmB # 177	ti wRt-3.1/ wVGmB-177/2010/438 Zwi L: 11.11.2010
11	cÜBg Bmj vgx wmwKDwi wJR wj t i vR Feb, 29 w` j Kkv ev/G XvKv-1000	÷ K teŕKvi   ÷ K wVj vi	wVGmB # 104	ti wRt-3.1/ wVGmB -104/2010/439 Zwi L: 22.11.2010   ti wRt-3.1/ wVGmB -104/2010/440 Zwi L: 22.11.2010
12	GwW twñi sm wj wgtUW 14. tZvcLvov ti vW tm`b evwVPv, XvKv-1000	÷ K teŕKvi   ÷ K wVj vi	wVGmB # 213	ti wRt-3.1/wVGmB-213/2011/449 Zwi L: 12.01.2011   ti wRt-3.1/ wVGmB-213/2011/450 Zwi L: 12.01.2011
13	Gbwmwme wmwKDwi wJR GÜ dvBb`wYqj mwvF¶mm wj t tmbv Kj`vY Feb, mjU bs 1504 (16 Zj v), 195 gwZwSj ev/G XvKv-1000	÷ K teŕKvi   ÷ K wVj vi	wVGmB # 61	ti wRt-3.1/ wVGmB-61/2011/451 Zwi L: 20.01.2011   ti wRt-3.1/ wVGmB-61/2011/452 Zwi L: 20.01.2011
14	wcP wmwKDwi wJR wj wgtUW cvb†KŠwo, dvU bs wW/3 20 Pwtg j xevM, kwššbMi XvKv-1217	÷ K teŕKvi   ÷ K wVj vi	wVGmB # 159	ti wRt-3.1/ wVGmB-159/2011/441 Zwi L: 02.01.2011   ti wRt-3.1/ wVGmB-159/2011/442 Zwi L: 02.01.2011
15	cevj x e`vs wmwKDwi wJR wj wgtUW GG Feb (8g Zj v) 23, gwZwSj ev/G, XvKv-1000	÷ K teŕKvi   ÷ K wVj vi	wVGmB # 214	ti wRt-3.1/ wVGmB-214/2011/443 Zwi L: 02.01.2011   ti wRt-3.1/ wVGmB-213/2011/444 Zwi L: 02.01.2011
16	AvBAvBwVGdwm wmwKDwi wJR wj t BDbyn tUW tmšUvi (tj t†j -7) 23, w` j Kkv ev/G, XvKv-1000	÷ K teŕKvi   ÷ K wVj vi	wVGmB # 238	ti wRt-3.1/ wVGmB-238/2011/446 Zwi L: 05.01.2011   ti wRt-3.1/ wVGmB-238/2011/445 Zwi L: 05.01.2011
17	G†K Lvb wmwKDwi wJR wj wgtUW te M`vj wñ qv (3q Zj v) 57, `j kvb, XvKv-1212	÷ K teŕKvi   ÷ K wVj vi	wVGmB # 006	ti wRt-3.1/ wVGmB-006/2011/447 Zwi L: 11.01.2011   ti wRt-3.1/ wVGmB-006/2011/448 Zwi L: 11.01.2011

μḡK bs	÷ K teḡKvi /wVj vḡi i bvg I wKvov	mbḡ` I aiY	m`m` bs	wbeÜb mb` bs I Bmji Zwi L
18	GbieGj wmwKDwi wJR wj wgtUW cåvb Kvḡḡ q, 18 w` j Kkv ev/G XvKv-1000	÷ K teḡKvi I ÷ K wVj vi	wVGmB # 203	ḡi wRt-3.1/ wVGmB-203/2011/457 Zwi L: 20.02.2011 I ḡi wRt-3.1/ wVGmB-203/2011/458 Zwi L: 20.02.2011
19	AvBGdAvBwm wmwKDwi wJR wj t weWweGj feb (11 Zj v) 8, i vRDK GirFubD, gwZwSj ev/G XvKv-1000	÷ K teḡKvi I ÷ K wVj vi	wVGmB # 142	ḡi wRt-3.1/ wVGmB-203/2011/455 Zwi L: 15.02.2011 I ḡi wRt-3.1/ wVGmB-203/2011/456 Zwi L: 15.02.2011
20	e`vsK Gwkqv wmwKDwi wJR wj wgtUW nv` x g`vbkb, 2 w` j Kkv ev/G XvKv-1000	÷ K teḡKvi I ÷ K wVj vi	wVGmB # 237	ḡi wRt-3.1/ wVGmB-237/2011/463 Zwi L: 13.03.2011 I ḡi wRt-3.1/ wVGmB-237/2011/464 Zwi L: 16.03.2011
21	Gwem wmwKDwi wJR wj wgtUW mvavi b exgv feb, cåvb Kvḡḡ q 2, w` j Kkv ev/G, XvKv-1000	÷ K teḡKvi I ÷ K wVj vi	wVGmB # 071	ḡi wRt-3.1/ wVGmB-071/2011/459 Zwi L: 08.03.2011 I ḡi wRt-3.1/ wVGmB-071/2011/460 Zwi L: 08.03.2011
22	wcḡgvi e`vsK wmwKDwi wJR wj wgtUW BKevj tmUvi (3q Zj v) 42 Kvgj AvZvZK <sup>©</sup> GirFubD ebvbx, XvKv-1213	÷ K teḡKvi I ÷ K wVj vi	wVGmB-236	ḡi wRt-3.1/wVGmB-236/2011/467 Zwi L: 20.04.2011 I ḡi wRt-3.1/ wVGmB-236/2011/468 Zwi L: 20.04.2011
23	Kgvm <sup>©</sup> e`vsK wmwKDwi wJR wj wgtUW Zi ½ Kgḡc- 19, i vRDK GirFubD, gwZwSj XvKv-1000	÷ K teḡKvi I ÷ K wVj vi	wVGmB -180	ḡi wRt-3.1/ wVGmB-180/2011/469 Zwi L: 21.04.2011 I ḡi wRt-3.1/wVGmB-236/2011/470 Zwi L: 21.04.2011
24	GAvBweGj K`wclvj gḡKḡ mwvFḡnm wj wgtUW 36, w` j Kkv ewYwR`K Gj vKv XvKv-1000	÷ K teḡKvi I ÷ K wVj vi	wVGmB -234	ḡi wRt-3.1/wVGmB-234/2011/471 Zwi L: 28.04.2011 I ḡi wRt-3.1/wVGmB-234/2011/472 Zwi L: 28.04.2011
25	kvnRvj wj Bmj vgx e`vsK wmwKDwi wJR wj wgtUW cåvb Kvḡḡ q, Rreb exgv feb (5g Zj v) 10, w` j Kkv ev/G	÷ K teḡKvi I ÷ K wVj vi	wVGmB -233	ḡi wRt-3.1/ wVGmB-233/2011/473 Zwi L: 04.05.2011 I ḡi wRt-3.1/ wVGmB-233/2011/474

μngK bs	÷ K teθKvi /wVj vti i bvg I wKvrv	mbt` I aiY	m`m` bs	wbeÜb mb` bs I Bmji Zwi L
	XvKv-1000			Zwi L: 04.05.2011
26	†Wëv K`wcvUvj wj wgtUW †Rwi b g`vbk b (4_ϙZj v) 55, w` j Kkv ewYiR`K Gj vKv XvKv-1000	÷ K teθKvi I ÷ K wVj vi	wVGmB -185	†i wRt-3.1/ wVGmB-185/2011/475 Zwi L: 08.05.2011 I †i wRt-3.1/ wVGmB-185/2011/476 Zwi L: 08.05.2011

PÆMög ÷ K G- †PÁ wj wgtUW:

μngK bs	÷ K teθKvi /wVj vti i bvg I wKvrv	mbt` I aiY	m`m` bs	wbeÜb mb` bs I Bmji Zwi L
1	wPUvMvs tkqvi m GÜ wmwKDwi wUR wj t, Kvkwdqv cvRv, ( bxP Zj v), 923/G Gm tK gyRe ti wW, AvMöev`, PUMög	÷ K wVj vi	wmGmB-60	†i wRt-3.2/wmGmB-60/2010/244 Zwi L: 22.09.2010
2	BvUvi KwUtbUvj wmwKDwi wUR wj wgtUW, Kvkwdqv cvRv, ( bxP Zj v), 923/G Gm tK gyRe ti wW, AvMöev`, PUMög	÷ K wVj vi	wmGmB-94	†i wRt-3.2/wmGmB-94/2010/230 Zwi L: 18.07.2010
3	wUtK tkqvi m wmwKDwi wUR wj t 83 LvZbMbR, PÆMög	÷ K wVj vi	wmGmB-69	†i wRt-3.2/wmGmB-69/2010/228 Zwi L: 18.07.2010
4	Gg tK Gg wmwKDwi wUR wj t wej wKm Uvl qvi (4_ϙZj v) cU # 6 (bZp) j kvb-2, XvKv- 1212	÷ K teθKvi	wmGmB-51	†i wRt-3.2/wmGmB-51/2010/229 Zwi L: 18.07.2010
5	dvi B ÷ ÷ Km GÜ eÜm wj t wCÜvm`ewi s (9g Zj v), 5 i vRDK GwFwbD, gwZvSj ev/G, XvKv-1000	÷ K teθKvi I ÷ K wVj vi	wmGmB-138	†i wRt-3.2/wmGmB-138/2010/236 Zwi L: 29.08.2010 I †i wRt-3.2/wmGmB-138/2010/237 Zwi L: 29.08.2010
6	Gwe wmwKDwi wUR wj wgtUW we wv Av wv Feb , 30-31 w` j Kkv ev/G, XvKv-1000	÷ K teθKvi I ÷ K wVj vi	wmGmB-101	†i wRt-3.2/wmGmB-101/2010/232 Zwi L: 01.08.2010 I †i wRt-3.2/wmGmB-101/2010/231 Zwi L: 01.08.2010
7	mpvi tkqvi m GÜ wmwKDwi wUR wj t Gwj U nvDm , wmwWG GwFwbD, wRwcl eK`# 395, B ÷ bwmi vev`, PÆMög	÷ K teθKvi I ÷ K wVj vi	wmGmB-67	†i wRt-3.2/wmGmB-67/2010/161 Zwi L: 18.07.2010 I †i wRt-3.2/wmGmB-67/2010/244

μgK bs	÷ K teθKvi /wVj vti i bvg I wKvov	mbt` I aiY	m`m` bs	wbeÜb mb` bs I Bmji Zwi L
				Zwi L: 22.09.2010
8	wemtbm K`wcvUvj tkqvi m GÜ wmKDWi wUR wj wgtUW, ki xd g`vbm (7g Zj v), 56-57 gwZwSj ev/G, XvKv-1000	÷ K teθKvi I ÷ K wVj vi	wmGmB-111	ti wRt-3.2/wmGmB-111/2010/243 Zwi L: 31.08.2010 I ti wRt-3.2/wmGmB-111/2010/242 Zwi L: 31.08.2010
9	B:Uvi b`kbovj wj wRs wmKDWi wUR wj t, Gg Gg Bmj vg cvRv 1-13 Kj vl j v cvov, wgi cj -1, XvKv- 1216	÷ K teθKvi I ÷ K wVj vi	wmGmB-80	ti wRt-3.2/wmGmB-80/2010/241 Zwi L: 31.08.2010 I ti wRt-3.2/wmGmB-80/2010/240 Zwi L: 31.08.2010
10	cÜBg e`sk wmKDWi wUR wj t wccj m BÝ`ti Ý feb , 36 w`j Kkv ev/G, (12 Zj v) XvKv- 1000	÷ K teθKvi I ÷ K wVj vi	wmGmB-141	ti wRt-3.2/wmGmB-141/2010/239 Zwi L: 31.08.2010 I ti wRt-3.2/wmGmB-141/2010/238 Zwi L: 31.08.2010
11	teBm K`wcvUvj wj wgtUW wmGÜGd Uvl qvi (8g Zj v) 1712 tkL gwRe ti wW, AvMöer` PÄMÜg	÷ K teθKvi I ÷ K wVj vi	wmGmB-40	ti wRt-3.2/ wmGmB-40/2010/249 Zwi L: 21.10.2010 I ti wRt-3.2/ wmGmB-40/2010/248 Zwi L: 21.10.2010
12	wi j vtqÝ teθKvti R mwv`mm wj t WweD WweD Uvl qvi 68, gwZwSj ev/G, XvKv-1000	÷ K teθKvi I ÷ K wVj vi	wmGmB-88	ti wRt-3.2/ wmGmB-88/2010/248 Zwi L: 12.10.2010 I ti wRt-3.2/ wmGmB-88/2010/247 Zwi L: 12.10.2010
13	B-wmKDWi wUR wj wgtUW c`vi vgvD>U tnBUM&(121 15 Zj v) 64/2/1, e- Kvj fvU`ti wW cj vov c`eb, XvKv-1000	÷ K teθKvi I ÷ K wVj vi	wmGmB-52	ti wRt-3.2/ wmGmB-52/2010/253 Zwi L: 29.11.2010 I ti wRt-3.2/ wmGmB-52/2010/254 Zwi L: 29.11.2010
14	wmU teθKvti R wj wgtUW Rieb exgv Uvl qvi 10, w`j Kkv ev/G, XvKv-1000	÷ K teθKvi I ÷ K wVj vi	wmGmB-133	ti wRt-3.2/ wmGmB-133/2010/250 Zwi L: 04.11.2010 I ti wRt-3.2/ wmGmB-133/2010/251 Zwi L: 04.11.2010
15	cej x e`vsK wmKDWi wUR wj t GG feb (8g Zj v) 23, gwZwSj ev/G, XvKv-1000	÷ K teθKvi I ÷ K wVj vi	wmGmB-105	ti wRt-3.2/ wmGmB-105/2010/256 Zwi L: 20.12.2010 I ti wRt-3.2/ wmGmB-105/2010/255

μgK bs	÷ K teŧKvi /wVj vti i bvg I wKv bv	mbt` I ai Y	m`m` bs	wbeÜb mb` bs I Bmji Zwi L
				Zwi L: 20.12.2010
16	eŧK BwCgj ÷ K teŧKvi R wj t WweD WweD Uvl qvi (tj t f j -8) 68, gwZwSj ev/G, XvKv-1000	÷ K teŧKvi	wmGmB-13	ti wRt-3.2/ wmGmB-13/2011/259 Zwi L: 18.01.2011
17	Avi GtK K`wclUvj wj t wmGÜGd Uvl qvi (8g Zj v) 1712 tkL gwRe ti vW, AvMöev` PÆMög	÷ K teŧKvi   ÷ K wVj vi	wmGmB-28	ti wRt-3.2/ wmGmB-28/2011/258 Zwi L: 02.01.2011   ti wRt-3.2/ wmGmB-28/2011/257 Zwi L: 02.01.2011
18	Möb tWèv wmwKDwi wUR wj t nv`x g`vbm (8g Zj v) 2, w`j Kkv ev/G, XvKv-1000	÷ K teŧKvi   ÷ K wVj vi	wmGmB-130	ti wRt-3.2/ wmGmB-130/2010/262 Zwi L: 14.02.2011   ti wRt-3.2/ wmGmB-130/2011/263 Zwi L: 14.02.2011
19	Bmj vgx e`vsK wmwKDwi wUR wj t 20 w`j Kkv ev/G (5g j v) XvKv-1000	÷ K teŧKvi   ÷ K wVj vi	wmGmB-146	ti wRt-3.2/ wmGmB-1466/2010/265 Zwi L: 29.03.2011   ti wRt-3.2/ wmGmB-146/2010/266 Zwi L: 29.03.2011
20	Gbwmwme wmwKDwi wUR GÜ dvBb`wYqj mwrf`mm wj t tmbv Kj`vY feb, mjU bs 1504 195 gwZwSj ev/G, XvKv-1000	÷ K teŧKvi	wmGmB-132	ti wRt-3.2/ wmGmB-132/2010/264 Zwi L: 06.03.2011
21	GAvBveGj K`wclUvj gvtKŧ mwrf`mm wj wgtUW 36, w`j Kkv ewYwR`K Gj vKv XvKv-1000	÷ K teŧKvi   ÷ K wVj vi	wmGmB-139	ti wRt-3.2/ wmGmB-139/2011/220 Zwi L: 05.05.2011   ti wRt-3.2/ wmGmB-139/2011/221 Zwi L: 05.05.2011
22	kvnRvj vj Bmj vgx e`vsK wmwKDwi wUR wj wgtUW cävB KvHj q, Rxb exgv feb (5g Zj v) 10, w`j Kkv ev/G XvKv-1000	÷ K teŧKvi   ÷ K wVj vi	wmGmB-134	ti wRt-3.2/ wmGmB-134/2011/267 Zwi L: 08.05.2011   ti wRt-3.2/ wmGmB-134/2011/268 Zwi L: 08.05.2011
23	G, tK, LvB wmwKDwi wUR wj t Avm-mvj vg Uvl qvi (3q Zj v) 57 AvMöev` ev/G, PÆMög	÷ K teŧKvi	wmGmB-007	ti wRt-3.2/ wmGmB-007/2011/269 Zwi L: 08.05.2011

μgK bs	÷ K teiKvi /wVj vti i bvg I wKvbw	mbt` I aiY	m`m` bs	wbeÜb mb` bs I Bmji Zwi L
24	wcihgqvi e`vsK wmwKdwi wJR wj wgtUW BKeyj tmUvi (3q Zj v) 42 Kvgvj AvZvZK©GirfwbD ebvbx, XvKv-1213	÷ K teiKvi I ÷ K wVj vi	wmGmB-143	ti wRt-3.2/ wmGmB-143/2011/270 Zwi L: 16.05.2011 I ti wRt-3.2/ wmGmB-143/2011/271 Zwi L: 16.05.2011

μwgk bs	wWcWUwi AskMthYKvi xi bvg I wKvbn	m`m`bs	K`vUvMwi	wbeÜb mb`bs I Zwi L
1	÷ K GÜ wmwKDwi wJR wj sKI tq wj t 16, cvKq̄i wW, Kq̄  bs 402 ewi avi v XvKv-1212	wmGmB-14	cb% gvtPq̄ e`vsKvi	GmBim/wbeÜb/wmw/weGj -wWic-324 Date: 13.07.2010
2	GgtKGG wmwKDwi wJR wj wgtUW wej wKm Uvl qvi (5g Zj v) cU bs _j kvb-2, XvKv-1212	wmGmB-51	cb% gvtPq̄ e`vsKvi	GmBim/wbeÜb/wmw/weGj -wWic-326 Date: 15.07.2010
3	wUGmAvB wmwKDwi wJR wj wgtUW Avi vM tPq̄vi (4_ Zj v) 68, AvMöev` ev/G, PÆMög-4100	wmGmB-09	cb% gvtPq̄ e`vsKvi	GmBim/wbeÜb/wmw/weGj -wWic-325 Date: 08.02.2010
4	mçvi tkqvi m&GÜ wmwKDwi wJR wj t Bij U nvDm, wmwVG GwFvbD, wRuc I e- bs 395, ce`bwm i ev`, PÆMög	wmGmB-67	cb% gvtPq̄ e`vsKvi	GmBim/wbeÜb/wmw/weGj -wWic-331 Zwi L: 30.08.2010
5	I tqwm Uvbq̄ wj wgtUW wvweGj Uvl qvi (20 Zj v) 17, _j kvb b_ q̄mvtkP-2, _j kvb, XvKv	wmGmB-72	cb% gvtPq̄ e`vsKvi	GmBim/wbeÜb/wmw/weGj -wWic-328 Zwi L: 05.08.2010
6	GmGb wmwKDwi wJR wj wgtUW 304/we tkL gwRe ti wW, gxi AvtkW (3q Zj v), † I qvbnU, PÆMög	wmGmB-125	cb% gvtPq̄ e`vsKvi	GmBim/wbeÜb/wmw/weGj -wWic-330 Zwi L: 28.02.2010
7	wcögqvi wj wRs wmwKDwi wJR wj wgtUW wvUvmq̄ewi s (17 Zj v) 5, i vRDK GwFvbD, gwZwSj v ev/G XvKv-1000	wmGmB-136	cb% gvtPq̄ e`vsKvi	GmBim/wbeÜb/wmw/weGj -wWic-327 Zwi L: 05.08.2010
8	Gwkqv wmwKDwi wJR wj wgtUW GmGm w÷j wewi s, tj t̄fj -6, mjU bs 602, 17/wm cvšc_ XvKv-1217	wWgM-88	cb% gvtPq̄ e`vsKvi	GmBim/wbeÜb/wmw/weGj -wWic-329 Zwi L: 05.08.2010
9	cöBg e`vsK Bbt̄f ÷ t̄gU wj wgtUW wccj m&BYti Ý feb (13 Zj v) 36, w`j Kkv ev/G, XvKv-1000	Ggwe	Kv ÷ wW wWic	GmBim/wbeÜb/wmw/weGj -wWic-63 Zwi L: 19.09.2010
10	GGBim wmwKDwi wJR wj wgtUW mjU bs 602, XvKv ÷ K G· t̄PÄ wewi s 9/Gd gwZwSj ev/G, XvKv-1000	wWgM-151	cb% gvtPq̄ e`vsKvi	GmBim/wbeÜb/wmw/weGj -wWic-334 Zwi L: 11.10.2010
11	evsj vt̄ k wGDp̄iqv wmwKDwi wJR wj t ki xd g`vbk (9g Zj v) 56-57 gwZwSj ev/G, XvKv-1000	Ggwe	cb% gvtPq̄ e`vsKvi	GmBim/wbeÜb/wmw/weGj -wWic-335 Zwi L: 12.10.2010
12	B ÷ vb`BYti Ý t̄Kv`úwb wj wgtUW GbAvBwe nvDm, t̄Rvbj Awdm 32, AvMöev` ev/G, PÆMög-4100	wmGmB-	cb% gvtPq̄ e`vsKvi	GmBim/wbeÜb/wmw/weGj -wWic-338 Zwi L: 20.12.2010

μḡK bs	ḡWcḡRUwi AskMḡYKvi xi bvg I ḡWKvbv	m`m` bs	K`vUvMwi	ḡbeÜb mb` bs I Zwi L
13	G. ḡcḡḡ ḡḡḡKḡDwi ḡUR ḡj ḡḡḡUW evḡḡU G`wi ḡ÷vḡḡU (3q Zj v) cU bs 6, GmḡḡeD(GBP), ḡj kvb GḡḡḡbD, ḡj kvb, XvKv-1212	ḡḡGmB-67	cbḡ% ḡvḡPḡḡ e`vsKvi	GmBḡḡ/ḡbeÜb/ḡḡḡḡḡGj -ḡḡḡc-337 Zwi L: 20.12.2010
14	ḡj vUḡḡ ḡkqvi m&GÜ ḡḡḡKḡDwi ḡUR ḡj t ḡḡGÜGd Uvl qvi (10g Zj v) 1712, ḡkL ḡḡRe ti vḡ, AvMḡev` , PḡEMḡḡ	ḡḡGmB-112	cbḡ% ḡvḡPḡḡ e`vsKvi	GmBḡḡ/ḡbeÜb/ḡḡḡḡḡGj -ḡḡḡc-339 Zwi L: 20.12.2010
15	BḡUvi KḡḡUḡḡḡḡḡḡ ḡḡḡKḡDwi ḡUR ḡj t 323/G, ḡkL ḡḡRe ti vḡ, ḡxi AvḡKḡḡ (3q Zj v), ḡ` I qvbnU, PḡEMḡḡ	ḡḡGmB-125	cbḡ% ḡvḡPḡḡ e`vsKvi	GmBḡḡ/ḡbeÜb/ḡḡḡḡḡGj -ḡḡḡc-336 Zwi L: 15.12.2010
16	Gbḡḡḡ ḡḡḡKḡDwi ḡUR ḡj ḡḡḡUW 151, ḡkL ḡḡRe ti vḡ, ḡj Zvb ḡvḡKḡḡ (4_ḡZj v), AvMḡev` ev/G, PḡEMḡḡ	-	cbḡ% ḡvḡPḡḡ e`vsKvi	GmBḡḡ/ḡbeÜb/ḡḡḡḡḡGj -ḡḡḡc-346 Zwi L: 20.01.2011
17	Gḡḡ ḡḡḡḡ sm ḡj ḡḡḡUW 14, ḡZvcLvbv ti vḡ, ḡḡ_b evḡḡPv XvKv-1000	-	cbḡ% ḡvḡPḡḡ e`vsKvi	GmBḡḡ/ḡbeÜb/ḡḡḡḡḡGj -ḡḡḡc-347 Zwi L: 26.01.2011
18	GḡK Lvb ḡḡḡKḡDwi ḡUR ḡj ḡḡḡUW ḡem M`j ḡḡi qv (3q Zj v) 57, ḡj kvb, XvKv-1212	ḡḡGmB-007	cbḡ% ḡvḡPḡḡ e`vsKvi	GmBḡḡ/ḡbeÜb/ḡḡḡḡḡGj -ḡḡḡc-348 Zwi L: 26.01.2011
19	ḡeBm K`ḡcUḡḡ ḡj ḡḡḡUW 1712, ḡkL ḡḡRe ti vḡ, ḡḡGÜGd Uvl qvi (8g Zj v), AvMḡev` ev/G, PḡEMḡḡ	-	cbḡ% ḡvḡPḡḡ e`vsKvi	GmBḡḡ/ḡbeÜb/ḡḡḡḡḡGj -ḡḡḡc-340 Zwi L: 03.01.2011
20	cḡBg Bḡj vḡx ḡḡḡKḡDwi ḡUR ḡj ḡḡḡUW 29, ḡ` j Kkv ev/G, XvKv-100	-	cbḡ% ḡvḡPḡḡ e`vsKvi	GmBḡḡ/ḡbeÜb/ḡḡḡḡḡGj -ḡḡḡc-341 Zwi L: 03.01.2011
21	BDḡḡḡ ḡkqvi ḡUW ḡj ḡḡḡUW 1397/7 ḡkL ḡḡRe ti vḡ AvMḡev` , PḡEMḡḡ	-	cbḡ% ḡvḡPḡḡ e`vsKvi	GmBḡḡ/ḡbeÜb/ḡḡḡḡḡGj -ḡḡḡc-342 Zwi L: 13.01.2011
22	ḡcP ḡḡḡKḡDwi ḡUR ḡj ḡḡḡUW 41/1 Pḡḡḡ x evM, kḡḡḡḡMi XvKv-1217	-	cbḡ% ḡvḡPḡḡ e`vsKvi	GmBḡḡ/ḡbeÜb/ḡḡḡḡḡGj -ḡḡḡc-364 Zwi L: 17.01.2011
23	ḡRḡḡKv K`ḡcUḡḡ ḡvḡḡRḡḡḡ ḡj t ḡcḡḡḡḡ v cvRv (5g Zj v) Rḡevj ti vḡ, PḡEMḡḡ	-	cbḡ% ḡvḡPḡḡ e`vsKvi	GmBḡḡ/ḡbeÜb/ḡḡḡḡḡGj -ḡḡḡc-364 Zwi L: 16.01.2011
24	Avi GḡK K`ḡcUḡḡ ḡj ḡḡḡUW ḡḡGÜGd Uvl qvi (8g Zj v) 1712, ḡkL ḡḡRe ti vḡ, AvMḡev` , PḡEMḡḡ	-	cbḡ% ḡvḡPḡḡ e`vsKvi	GmBḡḡ/ḡbeÜb/ḡḡḡḡḡGj -ḡḡḡc-345 Zwi L: 18.01.2011
25	Gbḡḡḡḡḡ ḡḡḡKḡDwi ḡUR GÜ cḡBb`ḡYqvj ḡḡḡḡḡ ḡj ḡḡḡUW ḡmbv Kj `vY Feb, ḡ-U bs 1504	-	cbḡ% ḡvḡPḡḡ e`vsKvi	GmBḡḡ/ḡbeÜb/ḡḡḡḡḡGj -ḡḡḡc-059 Zwi L: 02.03.2011







μwgK bs	‡Kv≠úvbxí bvg	Zwi L
1	BDbvB‡UW Gqvi I ‡qR weW wj t	12.07.2010
2	‡Kvnbj K"wgK"vj m wj t	26.07.2010
3	wj M"wm dU l q"vi wj t	26.07.2010
4	wgi vKj BÜwóR wj t	26.07.2010
5	wmGgwm Kvgvj BÜwóR wj t	26.07.2010
6	‡mvlvj x Awk BÜv. Wj t	26.07.2010
7	‡` k Mv‡gU m wj t	26.07.2010
8	‡gNbv wCBwU BÜv. Wj t	26.07.2010
9	gbv‡die <sup>a</sup> wj	26.07.2010
10	gv‡j K w" úvbs wj m wj t	02.08.2010
11	wKb dvgw mDwUK"vj m wj t	12.08.2010
12	mvd‡Kv w" úvbs	31.08.2010
13	mvfvi wi dävKUwi R	31.08.2010
14	wPvMvs ‡fwr‡Uej	31.08.2010
15	wew AwUvKvi m wj t	31.08.2010
16	÷"úvWwmi wj m wj t	31.08.2010
17	wj e‡ BbwdDkbm wj t	31.08.2010
18	GBP Avi ‡U· UvBj	31.08.2010
19	dv ÷"RbZv e"vsK wj DP"p vj dvÜ	20.09.2010
20	Möb ‡Wév wj DP"p vj dvÜ	28.09.2010
21	Bvgv evUb	30.09.2010
22	gbv‡U·	30.09.2010
23	gbvami wj m	30.09.2010
24	gbv÷vdj vi m	30.09.2010
25	XvKv wdkwi R	30.09.2010
26	Av‡bvqvi M"vj fvbvBwRs	30.09.2010
27	GKwUf dvBb K"wgK"vj m wj t	22.11.2010
28	AvBGAAvBGj Bmj wj m wj DP"p vj dvÜ-1	22.11.2010
29	wCBPw dv ÷"wj DP"p vj dvÜ	29.11.2010
30	GAvBweGj dv ÷"Bmj wj m wj DP"p vj dvÜ	10.01.2011
31	‡` keÜzcwj gvi	17.01.2011
32	e"K e"vsK 25% Kb fvwUej eÜ	08.02.2011
33	GgweGj dv ÷"wj DP"p vj dvÜ	08.02.2011
34	m"vj ‡fv K"wgK"vj BÜv. Wj t	21.04.2011

35		ei KZj øvn B†j K†U† WvqbwgmK wj t	19.05.2011
36		GgAvB w†g>U d'v±ix wj t	22.05.2011
37		BweGj GbAvi we w†DP†qvj dvÛ	23.05.2011
38		mvD_Bó e'vsK dv÷ ††DP†qvj dvÛ	23.05.2011
39		Gg†RGj evsj v†`k wj t	26.06.2011

### Gbtdvmfg>U

wmKDwi wJR AvBb cwi cvj tb e`\_Zvi `iaeb Gbtdvmfg>U wfvM cyRevRvti AvBb Agvb`/j sNb Kvixi weiaetx Acivtai ,iaZj wetePbvceR Rwi gvbv Ativcmn Ab`vb` AvBbMZ e`e`v` MhY Kti \_vtK| wmKDwi wJR AvBtbi AvI Zvq cwi`k0 I Z`šI Kvh` m`ubaeKiv nq| cwi`k0/ Z`šI KvTj wmKDwi wJR AvBb cwi cvj b bv Kiv mspvšI c0B AvfthvtMi wfvE`Z msik00 wmKDwi wJR AvBtbi weavb Abjvvti Bmjqvi I cyR evRvi msik00 Avfhy3 e`w3 ev c0Z0vtbi e`vL`v I `ibwb m`ubaeKti KwgkTbi wBKU Zv tck Kiv nq| Kwgkb wmKDwi wJR AvBb Abjvqx AvBbMZ e`e`v MhY Kti \_vtK|

wmKDwi wJR mspvšI AvBb cwi cvj tb e`\_Zvi Kvi tY Bmjqvi tKv`úwb, PvUw G`vKvD>U`v>U`n dvg`i, ÷K teiKvi, ÷K wJvi, tµwU tiwS tKv`úwb Ges msik00 Ab`vb`i`i weiaetx Kwgkb KZR 2010-2011 A\_`eQti wbgiefc Gbtdvmfg>U Kvhpug MhY Kiv ntqt0:

Bmjqvi tKv`úwb Gi weiaetx:

Kvi Y	Bmjqvi tKv`úwb Gi msL`v	AvBbMZ e`e`vi aib
wbi xw`Z Avw_`R wnmve weei Yx `wL`Tj e`_Zv	4	Rwi gvbv
Aa`ewwPK wnmve weei Yx `wL`Tj e`_Zv	9	Rwi gvbv
wmKDwi wJR mspvšI AvBb cwi cvj tb e`_Zv	12	Rwi gvbv
gj ab I tkqvi trwii s weei Yx `wL`Tj e`_Zv	14	Rwi gvbv
wb` Rbv/tbwUwdtKkb/Avt`k cwi cvj tb e`_Zv	3	Rwi gvbv
Avw_`R wnmve weei YxtZ mwVK I `PQ Z` c0Zdwj Z bv nI qv	3	Rwi gvbv
wbi xw`Z Avw_`R wnmve weei Yx `wL`Tj e`_Zv	4	mZK`Ki Y
Aa`ewwPK wnmve weei Yx `wL`Tj e`_Zv	2	mZK`Ki Y
wmKDwi wJR mspvšI AvBb cwi cvj tb e`_Zv	18	mZK`Ki Y
wb` Rbv/tbwUwdtKkb/Avt`k cwi cvj tb e`_Zv	9	mZK`Ki Y
tgvU	78	

PvUw`GKvD>U`v>U`U dvg`Gi weiaetx:

Kvi Y	PvUw`GKvD>U`v>U`U dvg`Gi msL`v	AvBbMZ e`e`vi aib
-------	--------------------------------	-------------------

Bmjqv̄ti i wbi xw¶Z AwL R̄ wmwve weei Yx msp̄všl̄ wmwKDwi wJR AvBb cwi cvj t̄b ēv\_Źv 2 mZK̄KiY

t̄gvU 2

÷ K teŋKvi / ÷ K wWj vi Gi wei æt̄x:

Kvi Y	÷ K teŋKvi / ÷ K wWj vi Gi msL̄v	AvBbMZ ēēv̄i aib
wmwKDwi wJR msp̄všl̄ AvBb cwi cvj t̄b ēv_Źv	7	mZK̄KiY
wmwKDwi wJR msp̄všl̄ AvBb cwi cvj t̄b ēv_Źv	48	Rwi gvbv
t̄gvU	55	

t̄µwWU ti wUs t̄Kv̄úvbx Gi wei æt̄x:

Kvi Y	Abt̄gv̄w̄ Z c̄iZ̄w̄wa Gi msL̄v	AvBbMZ ēēv̄i aib
wmwKDwi wJR msp̄všl̄ AvBb cwi cvj t̄b ēv_Źv	1	mZK̄KiY
t̄gvU	1	

Ab̄vb̄:

Kvi Y	msL̄v	AvBbMZ ēēv̄i aib
XvKv ÷ K G· t̄PÄ wj wgt̄UW : Trade execution Ges Index calculation Gi t̄¶t̄¶ wmwKDwi wJR msp̄všl̄ AvBb cwi cvj t̄b ēv_Źv	1	mZK̄KiY
K) ŋmq̄ wmi vR D̄t̄ŷj v L) kwDj Bmj vg wecj M) KvRx R̄t̄t̄ ei wk N) Kwei D̄I xb Avnt̄æŹ 0) Zvt̄qe Avj x Lv̄b P) Zwi Kj Bmj vg fBqv Q) BqvKe Avj x L̄v̄ Kvi : M̄gxb t̄dvb wj : Gi tkqvi tj bt̄`b msp̄všl̄ w̄el t̄q wmwKDwi wJR AvBb cwi cvj t̄b ēv_Źv	7	mZK̄KiY
tkqvi tj bt̄`b msp̄všl̄ w̄el t̄q wmwKDwi wJR AvBb cwi cvj t̄b ēv_Źv	1	Rwi gvbv
t̄gvU	9	

2010-2011 A\_©Qti Gbt̄dv̄m̄t̄ḡU wefv̄M KZK̄ Bmjqv̄i t̄Kv̄úv̄w̄b, PvUw̄ Ḡv̄Kv̄D̄Ūv̄Ūm̄ dv̄ḡm̄, ÷ K teŋKvi, ÷ K wWj vi, t̄µwWU ti wUs t̄Kv̄úv̄bx Ges ms̄w̄k̄ø Ab̄vb̄t̄`i wei æt̄x meŋgv̄U 145 w̄J kw̄t̄ḡj K ēēv̄ M̄h̄Y Kiv nt̄qt̄Q |

eZ@vfb GmBwm KZR Ges GmBwm0i wei æt× `vtqi KZ tgvU 366wU gvgj v wefwbAv`vj tZ wePvi vaxb i tqtQ|  
 gvgj v mgtni Av`vj Z wfwEK Ae`vb wbaefc t

µwgK bs	Av`vj tZi bvg	gvgj vi msL`v
01.	evsj vt`k mpcog tKvU®	Avxj wefvM
		nvBtKvU®efvM
02.	tRj v RR Av`vj Z, XvKv	01wU
03.	wetkl Av`vj Z I cwi tek Avxj Av`vj Z	01wU
04.	gnvbMi `vqi v RR Av`vj Z, XvKv	06wU
05.	gnvbMi 1g mnKvix `vqi v RR Av`vj Z, XvKv	01wU
06.	4_9hM tRj v RR Av`vj Z, XvKv	01wU
07.	5g hM tRj v RR Av`vj Z, XvKv	09wU
08.	4_9mnKvix RR Av`vj Z, XvKv	01wU
09.	9g mnKvix RR (mvfvi), Av`vj Z, XvKv	01wU
10.	Pxd tqtUcwj Ub g`vRt0U Av`vj Z, XvKv	09wU
11.	tRbvti j mnu0dtkU Av`vj Z, XvKv	196wU
tgvU gvgj vi msL`v t		366wU

02. 2010-2011 A\_ermti GmBwm0i ctq|-wectq| `vtqi KZ gvgj v t

GmBwm KZR/ GmBwm0i wei æt× `vtqi KZ gvgj v	gvgj v msL`v	mswq B weib
GmBwm0i KZR `vtqi KZ gvgj v	48wU	wmKDwi wUR AvBb fstMi Kvi tb Kwgkb KZR Avti wcz Rwi gvbv Av`vq Gi Rb` PDR Act, 1913 Gi Aaxtb tgvU 46 wU mnu0dtkU gvgj v Ges tcømtgU tkvqi weµq Kivi brtg cZvi Yvgj K KvRj vtc RwoZ _vKvi AwfthvM bexDj øvn (bex) Ms Gi wei æt× 1 wU wcuUkb gvgj v `vtqi Kiv nq  G0rov `vqi v gvgj v bs 634/2002 ( GmBwm -ebvg-Avij wúK BÜwóR wj :) wbaeAv`vj Z Avmvgxt` i Luj vm c0vtbi t0y tZ nvBtKvU®efvM Kwgktbi ctý Avxj `vtqi Kiv ntqtQ





Awil R Ae vi weei bx  
30 Rp, 2011 (mvguqK)

(tKwU UvKv)

weeiY	2010-2011		2009-2010
	etRU eiví	cKZ c0B	cKZ c0B
mi Kwi gAjx t	0.00		
c0i wK tRi (ce0ZPe0ti i Ae wqZ A_)		40.294	27.138
QvoKZ mi Kwi gAjx	0.00	0	0
tgvU mi Kwi gAjx	0.00	40.294	27.138
Kwgktbi weea Avq/c0B	11.603	53.428	19.853
tgvU eiví/c0B	11.603	93.722	46.991
cwi tkva t	LvZI qvix eiví	cKZ e"q	cKZ e"q
i vR ^e"q	10.597	8.898	5.867
gj abx e"q	0.736	0.610	0.771
FY/AM0g c0 vb	0.150	0.127	0.051
t_vK eiví			
cZ e"q	0.120	0.110	0.008
tgvU cwi tkva/e"q	11.603	9.745	6.697
mgvcbx tRi (Ae wqZ A_)		83.977	40.294

mmKDwi uJR I G- tPÄ Kugkb  
 welea Avq/cóBsi weei Y  
 30 Rp, 2010

μugK bs	weei Y K) Avq t	UvKvi cwi gvb	
		209-2010	2010-2011
1	÷ K wWj vi /teKvi ti wRtókb wcl	6,352,041.00	8,598,500.00
2	gvfPwU e`vsK I GtmU g`vfbRtgU tKvs ti wRtókb wcl	1,690,000.00	6,623,134.40
3	wgDPqyj dvÜ ti wRtókb wcl	27,175,000.00	178,709,215.03
4	A_vivBRW wi tçóR:UwUf ti wRtókb wcl	2,940,531.60	2,347,600.00
5	IPO, Application, filing, Right issue & Consent fee	93,631,110.82	87,966,099.70
6	Rwi gvbv Av`vq	6,164,500.00	28,731,500.00
7	cKvkbn weμq (%t gwmmK cñZte`b, AvBb eB BZ`w`)	-	348,400.00
8	`icÎ Zclwj (mmWDj weμq)	59,500.00	17,500.00
9	`Uvc g`vUwi qyj m&(c) vZb gvj vgvj weμq)	127,204.00	52,275.00
10	Depository Participant & Security Custodial fee	1,290,000.00	2,156,500.00
11	CDBL (B O A/C ti wRtókb wcl)	48,453,200.00	209,679,575.00
12	tμwU ti wUs tKvs wcl	75,000.00	25,000.00
13	Notice pay	-	22,350.00
14	Rgv UvKvi Dci e`vs†Ki mÿ	10,281,863.00	2,805,528.00
15	ev†Rqvß gwlb	-	5,303,090.17
16	Ab`vb` cñB	285,925.00	890,629.48
	meμgU Avq/cóB	198,525,875.42	534,277,196.78

mmKDwi wUR I G. tPA Kwgkþbi KgRZt` i %t` wkK ckqþyi ZwiJ Kv

μwgK bs	big l c`ex	ckqþyi wel qe`	t`k	Zwi L	Dt`v`v
1.	Rbve di nr` Avntg` , wbeftx cwi Pvj K	Gwkqvb ivDUþUwej Ab Ktcþi U MftbY	Pxb	16-17 Aþ±vei 2010	I BwmW
2.	Rbve GwJGg Zwi Kz/vgvb wbeftx cwi Pvj K	wdbwYqj wi dig: Gb Ggvi wRs gvþK cvi mcKwJf	tKwi qv	2-3 tmþDge 2010	GdGm we
3.	Rbve Avþbvqvi`j Bmj vg wbeftx cwi Pvj K	Uþi bþUv mmKDwi wUR wj Wvi kxc cMg	KvbvWv	13-18 gvP` 2011	GmBim
4.	Rbve Avki vdi Bmj vg cwi Pvj K (GgAvBGm)	GmBim ewil R AvS- RwZK BÝwUwDU di mmKDwi wUR gvþK tWfj cgU	BD Gm G	4-20 GwCj 2011	GmBim
5.	Rbve Gg. nvQvb gvngj` cwi Pvj K	mvD_ Gwkqvb wi Rbvj tdvi vg Ab te÷ cKwUm di ti ,tj Uwi tdg	wclwj cvBb	09 wWtm±t, 2010	GmWe
6.	Rbve gvneþj i ngvb tPþaj x cwi Pvj K (AvBb)	GmBim ewil R AvS- RwZK BÝwUwDU di mmKDwi wUR gvþK tWfj cgU	BD Gm G	4-20 GwCj 2011	GmBim
7.	Rbve kwdDj AvRg cwi Pvj K	tUbs tmkvb Bb gvj tqwkqv ti wUs Ktcþi kb evi nvW	gvj tqwkqv	27-29 tmþD±t 2010	BgwRs tμwU ti wUs wj t
08	Rbve wi cb Kgvi t`ebv_ cwi Pvj K	13Zg tUwKI tmngbvi Ab mmKDwi wUR gvþK ti ,tj kbm 2011	Rvcvb	14-18 gvP` 2011	I BwmW Ges GdGmG
09.	Rbve gxi tgvkvi id tnvmb tPþaj x, cwi Pvj K	gvj tqwkqv 11Zg ewil R GgwRS gvþK tMg	gvj tqwkqv	30 Aþ±vei - 04 bþf±t 2010	GmAvBwWwm
10.	Rbve gvngj` j nK cwi Pvj K	G`vcK wdbwYqj ti ,tj Uim tUbs BwbwqUf wi tRvbv tmngbvi Ab wi t` g`vbRtgU Ges BbUvbþj KþUvj m	wclwj cvBb	09-13 tg 2011	GmBim
11.	Rbve i wRe Avntg`	gvie KtgwmWUm Ae	fvi Z	13-17, Rj vB	GwCBim

	cwi Pvj K	G. tPA		2010	
12.	Rbre gbQai i ngvb cwi Pvj K	tKwi qv K'wclUvj gvKt tmgbvvi	tKwi qv	11-18, Rb 2011	GmBim
13.	Rbre Avej Kvj vg cwi Pvj K	G'vtcK wclbwYqvj ti ,tj Ui m tUlbs Bubwk tqwUf wi tRvbvj tmgbvvi Ab WvBti wlfm Ges - tKPWcWv±m	tKwi qv	23-27,tg 2011	GmBim
14.	Rbre tkL gvneþ-Di -i ngvb cwi Pvj K	G'vtcK wclbwYqvj ti ,tj Ui m tUlbs Bubwk tqwUf wi tRvbvj tmgbvvi Ab e'vsK Gbvj vBimm Ges mrcvi wfk b t'g	wclwj cvBb	11-15, Gvcj 2011	GmBim
15.	Rbre Aveyi vqnvb tgvnr±\$ tgvZwmg vej vn,Dc-cwi Pvj K	wi tRvbvj tmgbvvi Ab gvKt mrcvi wfk b	gvj tqwkqv	13-17, wWt±m±t,2010	GmBim
16.	Rbre dKifj Bmj vg Dc-cwi Pvj K	wi tRvbvj tmgbvvi Ab gvKt mrcvi wfk b	gvj tqwkqv	13-17, wWt±m±t,2010	GmBim

23. Kugkɛbi tPqvi g'vb, m`m` I wbeɸx` i Zwj Kv  
(30 Rp 2011 Zwi tL)

tPqvi g'vb t

- Aa'vcK W. Gg Lvqi æj tnvɛmb

m`m` t

- cɔdmi tgv tɛj vj Dwi b wRvɸx
- tgv Avgrv` tnvɛmb
- Awi d Lvb

Kugkɛbi wbeɸx t

- tgvnvɛɸ` Avaj nvbub tRvqi `vi, wbeɸx cwi Pvj K (On Lien to BICM))
- tgv Avtbvqi æj Kwei fBqv, wbeɸx cwi Pvj K (OSD)
- di nv` Avntg`, wbeɸx cwi Pvj K
- i æKmvb tPšaj x, wbeɸx cwi Pvj K
- G, wJ, Gg, Zwi K¼vɸv, wbeɸx cwi Pvj K
- tgv Avtbvqi æj Bmj vɸ, wbeɸx cwi Pvj K
- tgv mvBdi i ngvb, wbeɸx cwi Pvj K
- tgv Avki vɸj Bmj vɸ, wbeɸx cwi Pvj K
- Gg, nvQvb gɸngj, wbeɸx cwi Pvj K
- gvneɸj Avj g, cwi Pvj K
- gvneɸei i ngvb tPšaj x, cwi Pvj K
- Kvgi æj Avbvɸ Lvb, cwi Pvj K
- tgvnvɛɸ` tRvDj Kwi g, cwi Pvj K
- tgvnvɛɸ` kwdDj AvRg, cwi Pvj K
- wi cb Kɸvi t`ebv\_, cwi Pvj K
- gxi tgvkvi i d tnvɛmb, cwi Pvj K
- tgv Rvni½xi Avj g, cwi Pvj K
- tgv gɸngj j nK, cwi Pvj K
- cɔxc Kɸvi emvK, cwi Pvj K
- tgv gbmi i ngvb, cwi Pvj K
- i wRe Avntg`, cwi Pvj K
- tgv Avej Kvj vɸ, cwi Pvj K
- gvnvɛɸ` Avej nvmvb, cwi Pvj K
- tKL gvneɸ -Di i ngvb, cwi Pvj K

- dvi nrbv dvi æKx, Dc-cwi Pvj K
- Avey i vBnrbv tgvrvæš` gZvmmg vej øvn, Dc-cwi Pvj K
- tgv dLi æj Bmj vg gRg`vi , Dc-cwi Pvj K
- G.Gm.Gg.gvngy`j nvmvb, Dc-cwi Pvj K
- gvræš` wRqvDi i ngvb, Dc-cwi Pvj K
- gy`vi x Rvrbv, Dc-cwi Pvj K
- Gg. G. gv`j K, wnmvei ¶Y KgRZP
- tgvrvæš` i wKey i ngvb, mnKwi cwi Pvj K
- Abyt` , mnKwi cwi Pvj K
- tgv BKeyj tnmvBb, mnKwi cwi Pvj K
- tgv: mvBdj Bmj vg , mnKwi cwi Pvj K
- tgv: I w`j Bmj vg, mnKwi cwi Pvj K
- tgvrvæš` Rvni æj nK, mnKwi cwi Pvj K
- tgv: Bdmvd fBqv, mnKwi cwi Pvj K
- %æq` gvræš` tMvj vg gvl j v, mnKwi cwi Pvj K
- Zvrbqv kvi vgb, mnKwi cwi Pvj K
- mj Zvrbv cvi fxb, mnKwi cwi Pvj K
- nvdR tgv nvi æbj i wk` , mnKwi cwi Pvj K
- gvngy` v wki xb, mnKwi cwi Pvj K
- tgvrvæš` tnv`mb Lvb, mnKwi cwi Pvj K
- cvi fxb Av<sup>3</sup>vi , mnKwi cwi Pvj K
- tgv i wk`j Avj g, wGm Uz`Pqvi g`vb